



Software for boar semen processing



Modern management, fit to your unique lab

Prism10 perfectly integrates all ejaculate data and connects all production and management processes from semen collection to reporting production statistics. It stands out through its dynamic, intuitive user interface and flexible architecture.

The product-centered approach allows for customized mapping of production processes. Comprehensive reporting with customizable templates and the production dashboard provide extensive management control options.

Your benefits

- Secure and traceable input of data, minimizing entry errors
- Data is accessible remotely via VPN
- High production reliability, operation is not dependent on a single device
- Great flexibility in serving different customers with various products
- Statistical analysis of all production data
- View important performance parameters at a glance
- Overview of any time frame of production
- User-friendly interface
- Hassle-free connection to Minitube devices
- Guaranteed long-term support by experienced team of developers

Prism10 subscription

REF: [12535/0010](#)

Web browser-based application

- Opens in Google Chrome web browser
- Connects to local database
- Data is stored on user's local hard drive or network

SaaS – Software as a Service

- Low initial investment
- Package includes updates and service
- Continuous support and development by Minitube
- Benefit of more features to come
- Great flexibility and scalability



Data at a glance



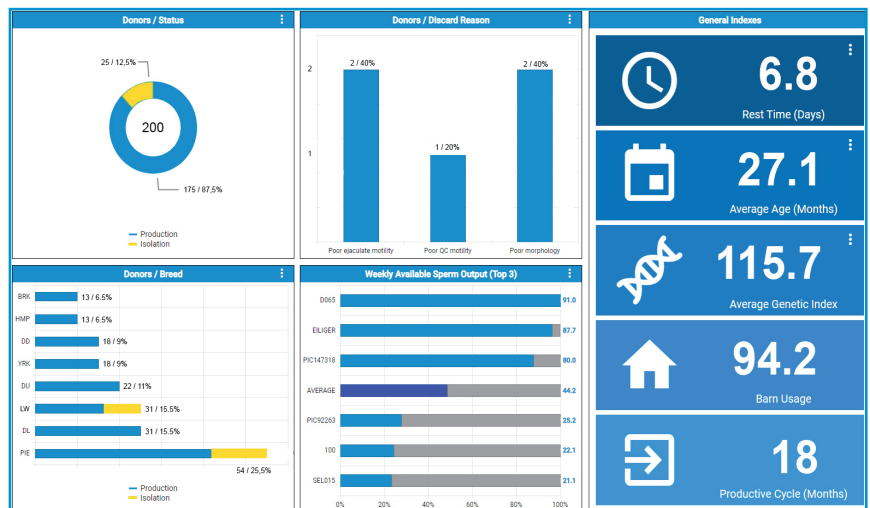
Easy to read, easy to use dashboards

- Flexible architecture - operation from any connected computer or remote access via VPN
- Simple graphs for quick analysis
- Live data can be accessed remotely: orders filled, progress of daily production, discarded ejaculates, etc.

Donor dashboard

Shows overall stud breakdown for usage and averages, such as:

- Genetic index
- Age
- Rest days
- Weekly available sperm output
- Breed breakdown
- Discard reasons
- Frequency



Production dashboard

For a selected time period, produced products can be broken down by:

- Breed
- Total produced doses
- Produced doses by product
- Total collections and their status
- Average semen quality during selected time period





Customized processes



Software with versatility

- Product-centered approach allows for customized processes: every ejaculate can be processed into different products
- User-defined ejaculate data sheet: user can choose how many previous ejaculates are used to determine average ejaculate values and the number of past ejaculates seen in trend graphs
- Straight forward ejaculate processing:
 - Boar ID
 - Ejaculate volume (scale)
 - Concentration (photometer or AndroVision®)
 - Motility and morphology (AndroVision® or manually)
 - Evaluator ID
 - Collector ID

Dynamic collection list

- Prepare dynamic collection plans based on orders
- Use different filters and criteria to select all boars for a production day

Species	Breed	Donor Name	Donor ID	Genetic Index	Birth Date	Status	In Date	Rest Period Planned	Rest Period Actual	Date of Last Collection	Live Now
Porcine	GDUR	4075	4075			Production	5/31/21	8		11/4/21	
Porcine	GDUR	5941	5941			Production	5/31/21	8		11/4/21	
Porcine	GDUR	1373	1373			Production	5/31/21	116		7/19/21	
Porcine	LW	LW 04	LW 04	131	7/29/19	Production	9/30/21	42		10/1/21	

Dynamic ejaculate entry

- Enter ejaculate data and decide its path to the final product
- Donor's historical data and trend charts can be turned on/off as desired

Ejaculate Data

Volume* (147): 250 Conc. (B./mL) (0.637): 579

Motility (%) (04.4): 90.23 Prog. Motility (%) (09.4): 81.5

Prox. Drop (%) (0.76): 4.35 Distal Drop (%) (0.87): 6.32 Bent Tails (%) (1.12): 1.28

Total Defects (%) (10.74): 11.95 Composite Score (%) (100): 80

Remark: Temp (°C) (null): 38 pH (null)

Semen Collector: [Dropdown]

Lab Technician: LT [Dropdown]

Animal Caretaker: [Dropdown]

Donor Information

Donor 11372 **Averages last 3 of 25 Collections**

Name: 11372 Genetic Index: - Volume: 183.30 Total Motility (%): 92.80 Prox. Drop (%): 3.18

ID: 11372 Birth Date: - Conc. (B./mL): 0.383 Prog. Motility (%): 88.77 Distal Drop (%): 6.14

Breed: 600 Rest Period Planned: - Composite Score: 100.00 Total Sperm (B.): 90.481 Best Tally (%): 1.40

Status: Production Rest Period Actual: 0 Days Rest: 4.07 Total Defects (%): 10.72

Ejaculate Trends - last 3 of 15 Collections

Volume: Line graph showing volume over time (5/12, 5/19, 5/26).

Total Motility: Line graph showing total motility over time (5/12, 5/19, 5/26).

Concentration: Line graph showing concentration over time (5/12, 5/19, 5/26).

Progressive Motility: Line graph showing progressive motility over time (5/12, 5/19, 5/26).

Composite Score: Line graph showing composite score over time (5/12, 5/19, 5/26).

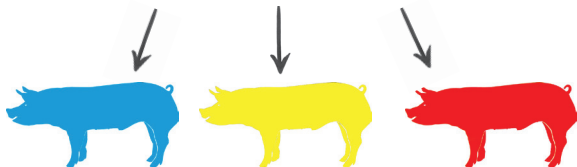
Morphology: Line graph showing morphology over time (5/12, 5/19, 5/26).



Product Creation: Choose your product and process

After entering a collection there are numerous paths which can be taken to turn an ejaculate into product.

Single sire products



- Ejaculate can be processed directly into single sire products
- Final dilutions can be made at this step as well

Split into different products



Ejaculate can be split into different products with part being processed single sire and the other part merged to a pool

Donor Information	Actual Ejaculate Data	Product Details
<p>Name: 938456 Genetic Index: 140 ID: 938456 Birth Date: - Breed: 200 Rest Period Planned: 4 Status: Production Rest Period Actual: 0</p> <p>Ejaculate ME0000000239</p> <p>Volume: 281 Prox. Drop [%]: 3.5 Conc. [B./ml]: 0.421 Distal Drop [%]: 1.8 Motility [%]: 92.2 Bent Tails [%]: 0.8 Prog. Motility [%]: 89.3 Total Defects [%]: 6.0 Comp. Score [%]: 100 Temp [°C]: 38 pH: 7.2</p>	<p>Available Cells [B.] 118.301 Total Cells [B.] 118.301</p> <p>Available Conc. [B./ml] 0.023 Total Conc. [B./ml] 0.023</p> <p>Volume 5105 Volume of Extender [ml] 4824</p> <p>Merge Ejaculate to Pool</p> <p>Split Ejaculate</p> <p>Dilutions: 1 4824 ml Androstar Plus</p>	<p>Available Volume [ml] 5105 Planned Volume [ml] 5105 Actual Concentration [B./ml] 0.023</p> <p>MP0000000078 Process 2.7/80 QuickTip Tube Doses [filled / planned] 20 / 20 Sperm Cells per Dose [B.] 1.854 Process Concentration [B./ml] 0.034 Extender Androstar Plus Process volume per dose [ml] 80 Packaging QuickTip Flexitube®</p> <p>MP0000000079 Process 2.7/80 QuickTip Bag Doses [filled / planned] 43 / 43 Sperm Cells per Dose [B.] 1.854 Process Concentration [B./ml] 0.034 Extender Androstar Plus Process volume per dose [ml] 80 Packaging QuickTip Bag®</p> <p><input type="checkbox"/> View Data Before Sending Send selected product to filling machine Send all products to filling machine</p>

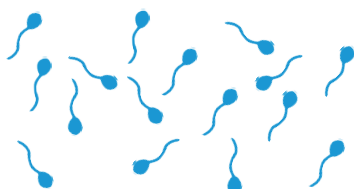
Special feature – parking zone:
Park ejaculates at any time during production to be processed later

Merge to pool,
then dilute

OR

Dilute,
then merge

Send products to
packing machines



- Merge the ejaculate into a pool; multiple products can be made from a single pool
- Dilution can be done first, and then pool



Individual products can be sent to different packing machines based on product type, volume, or user needs



Default and allowed products by breed

Allows users to define which products can be produced by specific breeds and lines along with different defaults for each. Users can set up default product creation and pool templates for each individual breed.

Edit Breed

Breed Short Name 200	Breed Code 200	Full Name DNA 200 Landrace
-------------------------	-------------------	-------------------------------

<p>Production Defaults</p> <p>Process 2.7/80 QuickTip Tube</p> <p>Extender Androstar Plus</p> <p>Package QuickTip Flexitube®</p> <p>Template Stellar</p>	<p>Allowed Processes ✓</p> <p><input type="checkbox"/> 2.7/80 Bag</p> <p><input type="checkbox"/> 2.7/80 Tube</p> <p><input type="checkbox"/> 3.2/80 Mat Bag</p> <p><input type="checkbox"/> 3.2/80 Mat Tube</p> <p><input checked="" type="checkbox"/> 2.7/80 QuickTip Tube</p>
---	---

User-defined composite score

Calculates the number of available sperm cells or total cell production in an ejaculate based on:

- Morphology
- Total or progressive motility

Composite Calculations (Porcine)

Total Motility

Progressive Motility

Proximal Droplets

Distal Droplets

Bent Tails

Use composite score in available sperm calculation

Preset and unlimited user-defined flags

Prism10 offers a set of predefined flags. The number of user-defined flags is unlimited.

All progress bars and flag colors are customizable, so technicians can tell at a glance the status of an ejaculate and production, or distribution completion based on color.

Flags

■ Trashed Flag

Trashed Flag Color

■ Unused Flag

Unused Flag Color

■ Collection Flag

Collection Flag Color

Font Color

✕ Cancel ↺ Default 💾 Save

Customized pool ejaculate product order

Prism10 allows users to define the setup for their main ID format. Users can specify:

- Stud prefix values in front of each ID
- Max length for the ID
- If it is padded with zeros

Edit Pool ID Format: 2210526013

Auto Increment Date Based

Pool ID Prefix
2

Pad with zeros

Max digits
3

Auto increment number
12

Custom ID Example

Warning and limit sets

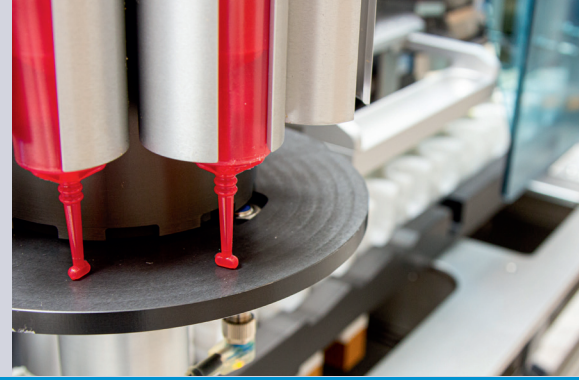
Ensure quality products by specifying at what levels to display warnings for ejaculate entry data, and at what levels to specify limits where ejaculates are not allowed to be processed.

For example, if a limit on bent tails is exceeded, then the ejaculate will be flagged with a trashed flag and the technician will only be able to save the record. The ejaculate will not be processed.

Warnings and Limits (Species: Porcine)				
	Min Limit	Min Warning	Max Warning	Max Limit
Volume	50	100	400	900
Conc. [B./ml]	0.01	0.15	0.4	2
Motility [%]	50	65		
Prog. Motility [%]	40	50		
Prox. Drop. [%]			10	30
Distal Drop. [%]			10	30
Bent Tails [%]			10	30
Total Defects [%]			20	30
Composite Score [%]	65	75		
Maximum time to predilution				



Production tracking



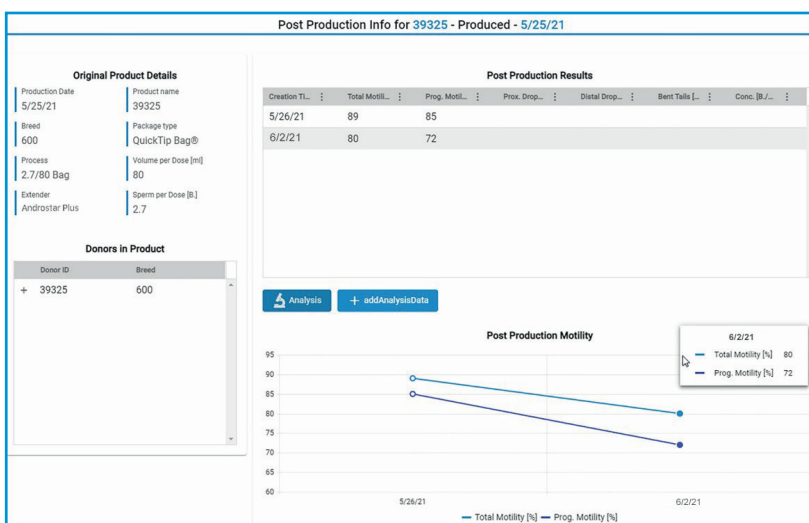
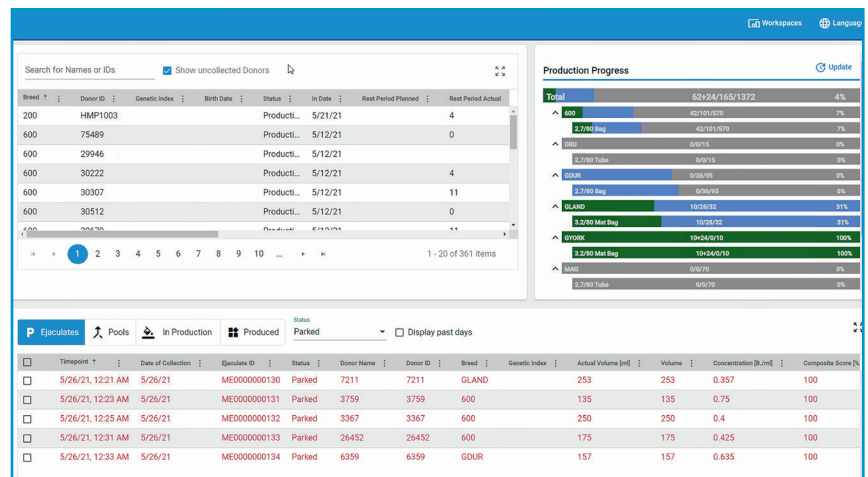
Overview of any time frame of production

- Seamlessly integrate production and sales
- Data connection to Minitube devices and external programs
- Comprehensive reporting with customizable templates and export function (PDF, Excel)

Production overview

Shows all ejaculates, pools, and products which have been produced or are being produced for the current day. In addition, it shows the animals on the collection list and production progress charts.

- Production progress (%)
- Produced doses
- Calculated doses
- Ordered doses
- Remaining doses to produce
- "Over-production" doses



Post-production checks

Prism10 has an extensive and dynamic post-production quality control checking interface.

Technicians and managers can quickly glance at all information about a produced product and how it has performed since the time of production.



Modernized reporting, customizable to your workflow of the day

Flexible features allow data to be filtered and rearranged according to what needs to be analyzed, whether that is a broad overview or highly focused. All reports can be easily exported to PDF documents or Excel spreadsheets.



Sort in ascending or descending order by single clicks on column headers; hold, drag, and drop columns to group by information

Columns

- Breed
- Breed Line
- Donor Status
- In Date
- Out Date
- Birth Date

RESET APPLY

Filter

Is after or equal to
3/1/2021

And

Is before or equal to

Is not equal to
Is after or equal to
Is after
Is before or equal to
Is before
Is null

Year
Month
Week
Day
Collection

Arrange by period or collection basis

Multiple filtering options for any column in the grids

Custom Templates

+ Semen Quality

Custom Templates

Semen Quality

New Custom Template

Name* Semen Quality

Description Report only with Motility and Morphology results

Cancel Save

Save custom reports as templates

Users can save any customized report as a template to use in creating future reports requiring similar variables. More than 50 default templates are delivered with the system.

New Custom Template

Name* Semen Quality

Description Report only with Motility and Morphology results

Cancel Save



Donor record

Allows tracking of all major information and custom flagging for disposal reason. Also tracks every change to genetic index value to record entire progression of a boar's genetic index from arrival to disposal.

Donor	Averages last 12 of 12 Collections	Genetic Index History
Name: ESTONIA	Genetic Index: 120	Volume: 392.30
ID: 61104	Birth Date: 2019-11-10	Total Motility (%): 77.61
Breed: PIE	Rest Period Planned: 4	Prog. Motility (%): 74.31
Status: Quarantine	Rest Period Actual: 197	Distal Drop (%): 2.36
		Composite Score: 76.98
		Total Sperm (B): 106.8
		Bent Tails (%): 3.52
		Days Rest: 3.75
		Total Defects (%): 9.96

Line#	Product	Breed Name	Ordered / Distrib	Date Ordered	Date Shipped
1	2.7/80 Bag	600	35 / 30	10/30/21	10/30/21

Add orders, distribute doses

Enter orders manually or import them from spreadsheets. Produced doses can be distributed to customers, farms, companies. Packing lists can be easily generated and printed.



External device configuration

Prism10 has a very robust external device configuration interface. It receives data from ejaculate label via barcode reader, balance, AndroVision®, or SDM 6 photometer.

Prism10 connects to:

- SDM 6 photometer
- AndroVision®
- Kern and Ohaus scales
- SmartDispenser (all models)
- AutoDispense
- QT-Packer
- HyPacker
- TwinPacker
- MiniBSP
- SPS-11 and SPS-21
- Zebra label printer

