



Prism10 Bull lab software



Modern management, fit to your unique lab

The lab software Prism10 Bull offers a modern process and product-based concept for controlling bull semen production. It perfectly integrates all ejaculate data and connects all production and management processes from semen collection to reporting production statistics.

Prism10 Bull stands out through its dynamic, intuitive user interface and flexible architecture. Comprehensive reporting with customizable templates and the production dashboard provide extensive management control options.

Prism10 Bull lab software subscription 12535/0005

+ Your benefits

- + Newly developed, modern, browser-based software
- + Guaranteed long-term support by experienced team of developers
- + Hassle-free connection to Minitube devices
- + Secure and traceable input of all data, entry errors are minimized
- + High production reliability, operation is not dependent on a single device
- + The most important performance parameters at a glance
- + Data is accessible remotely by smartphone
- + Overview of any time frame of production
- + Statistical analysis of all production data



Customized processes

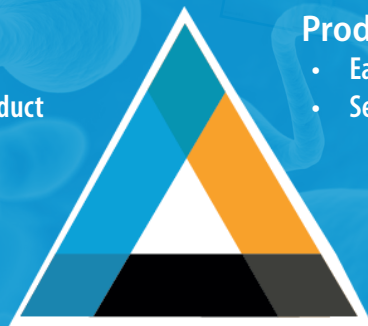
- Customized mapping for a product centered program
- Straight forward processing, flexible to your needs

Production tracking

- Easy connection to Minitube devices
- Seamlessly integrate production and sales

All data at a glance

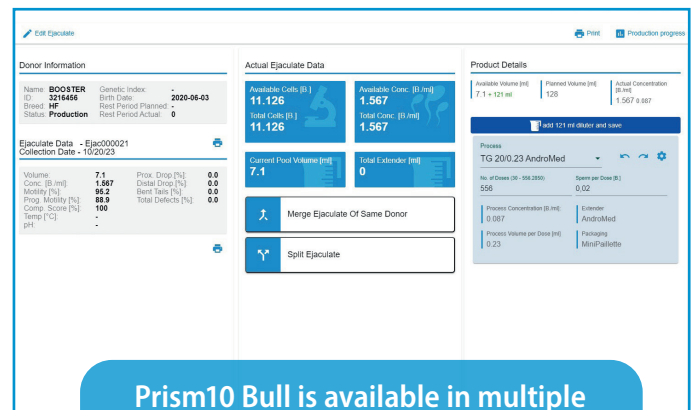
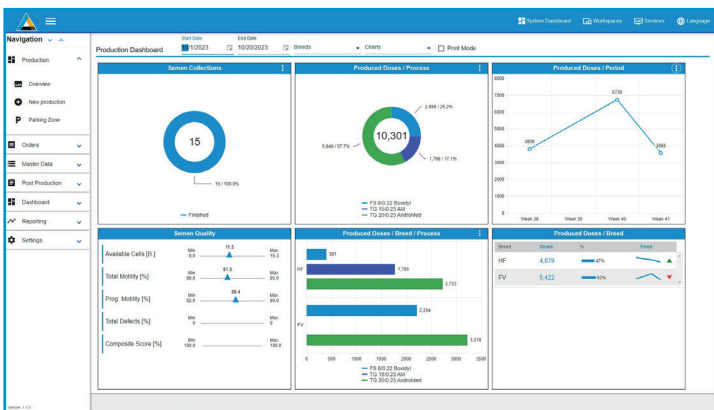
- Secure and traceable input of data
- View important parameters first





Product features

- Straightforward ejaculate processing: bull ID, ejaculate volume (scale), concentration (photometer or AndroVision®), motility (AndroVision® or manual), evaluation and collector identification etc.
- Data connection to iMale, AndroVision®, SDM 6, SmartDispenser (all models), MPP Quattro & MiniJet printer (CombiSystem)
- Flexible architecture: operation from any connected computer
- Product-centered approach allows for customized mapping of production processes: every ejaculate can be processed into different products, for example with different number of sperm per dose, different packaging, dose volume, extender etc.
- Flexible tool to import and update donor information from MS Excel
- Flags for marking characteristics of ejaculates, collections, and bulls (e.g., reason for discard, quality of mount)
- Adjustable limits and warnings for ejaculate data to help station manager in decision-making during production
- Live data can be accessed remotely, e.g., orders filled, progress of daily production, discarded ejaculates
- Comprehensive reporting with customizable templates and export function (PDF, MS Excel)
- Donor animal dashboard with graphs: overview of average breeding value, age, weekly available sperm output, barn usage and others
- Production dashboard with graphs: overview of semen quality, produced doses per period, per bull, per process, among others



Prism10 Bull is available in multiple languages

Electronic bull identification

The wireless combination of iMale RFID reader and iMale label printer is the perfect addition to Prism10 Bull. It allows safe reading of animal ear tags and direct printing of barcode labels with the animal ID in the semen collection area. The printed barcode label can be stuck on the semen collection vial and can then be used to securely identify and process ejaculates in the laboratory.

- iMale RFID reader, built-in quick-charger and external power unit included [1] 18001/0000
- iMale label printer [2] 18001/0200

