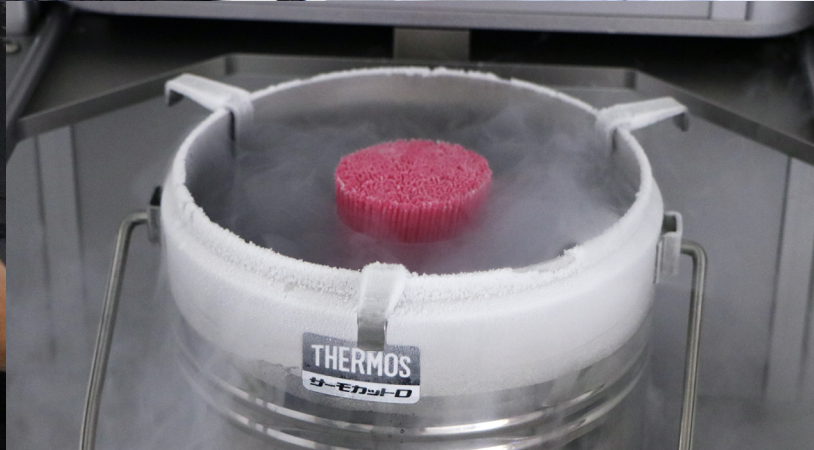
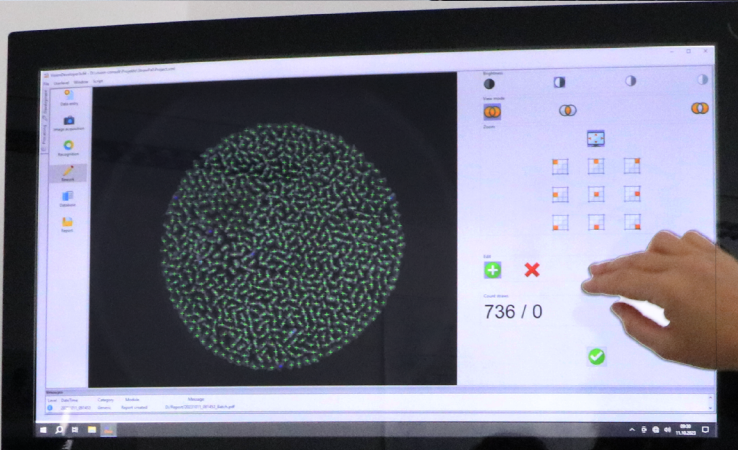




StrawPal



Innovative, camera-based system for counting straws in liquid nitrogen



Timesaving and accurate counting of straws

The StrawPal revolutionizes the workflow of incoming and outgoing inspection and inventory of frozen semen straws.

This innovative system seamlessly integrates cutting edge camera technology with artificial intelligence software to deliver outstanding results. Thanks to this remarkable synergy, the StrawPal can accurately count **up to 800 straws in under two minutes**. This level of efficiency is unparalleled, significantly streamlining the counting process and saving valuable time.

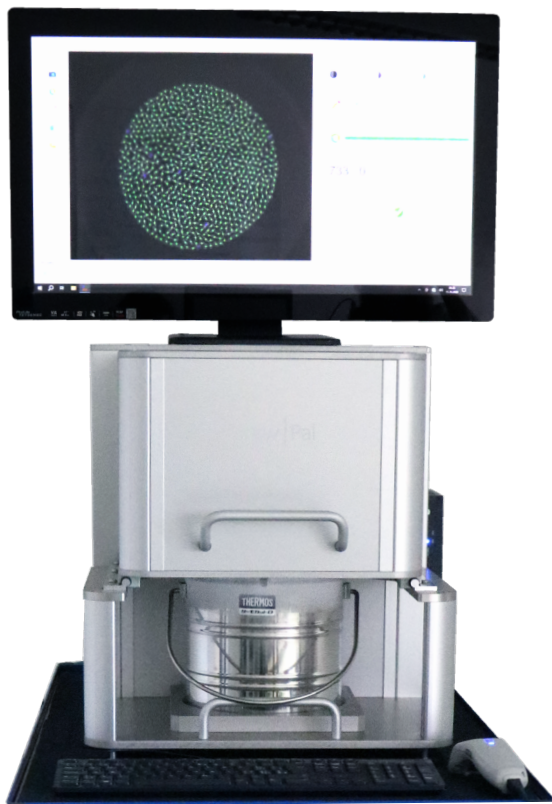
The StrawPal guarantees the **preservation of sperm quality** at all times. During the counting procedure, the semen doses are securely stored in a dewar filled with liquid nitrogen.

StrawPal

16824/0000

+ Your benefits

- + Ideal for inventory, monitoring of incoming and outgoing frozen semen straws
- + Preservation of sperm quality is guaranteed at all times
- + Straws of all colors, in all sorts of goblets and both 0.25 ml and 0.5 ml straws can be counted
- + Main data can be imported via barcode
- + Option to import lists of bulls and AI stations via CSV file
- + Counts are saved in a database
- + Option to create reports and packing lists
- + Easy and intuitive operation
- + Minimal cleaning required



Counting straws with the StrawPal instead of manually...

...takes a fraction of the time

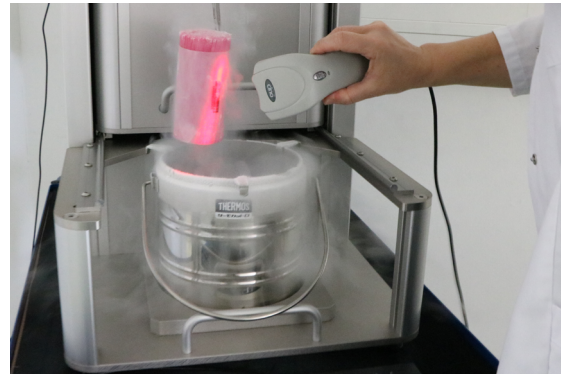
...is safer for both employee and semen quality

...and provides even more accurate numbers



Intuitive setup and operation

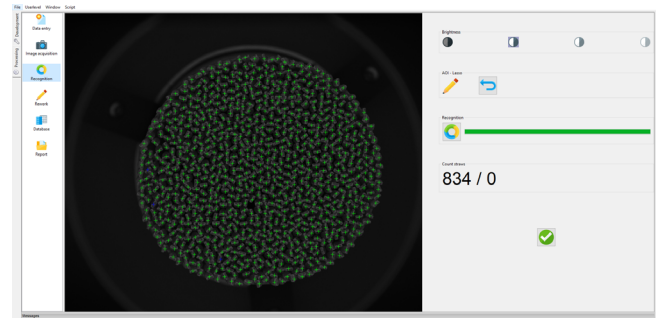
- The system consists of a stainless-steel frame with a camera sling and fixture for the dewar as well as a computer with a touchscreen
- To conduct a count, straws in a goblet are placed in the goblet holder of the isolated dewar, which is filled with liquid nitrogen
- Data can be entered manually or imported via an optional barcode reader
- With the option to import lists of bulls and AI stations, these data can be extracted from the database
- Upon pulling the camera sling over the dewar, the high-resolution camera takes a picture of the straws, which is then analyzed by the StrawPal software



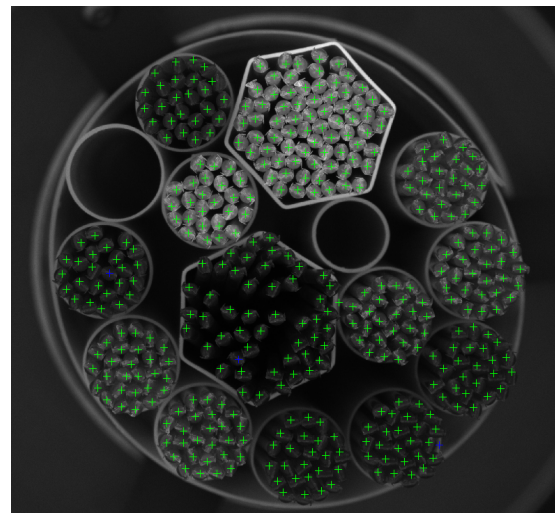
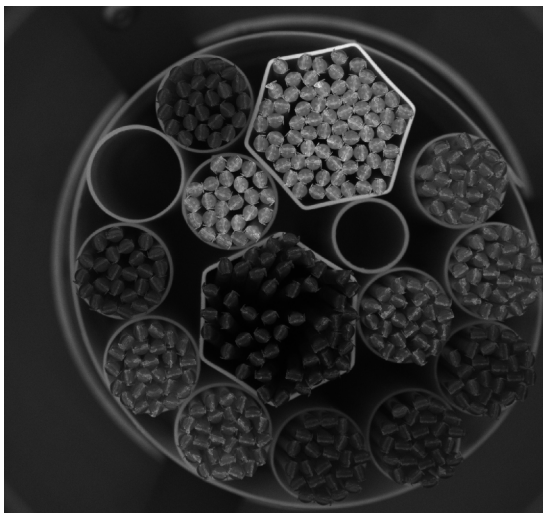
Allows secure and convenient data transfer

Highly accurate, easy to process results

- The system offers an impressive detection rate of about 99 % of straws, working with straws of all colors and both 0.25 ml and 0.5 ml straws
- To make counting even more precise, the operator has the option to add further detection points for missed straws in a quick and intuitive way
- All counts, associated data and images are saved in a database
- PDF reports and packing lists can be created directly from the software with a single mouse click, making the entire process even more efficient



Counts up to 800 straws in less than two minutes



Detects about 99 % of straws (all colors, 0.25 and 0.5 ml)

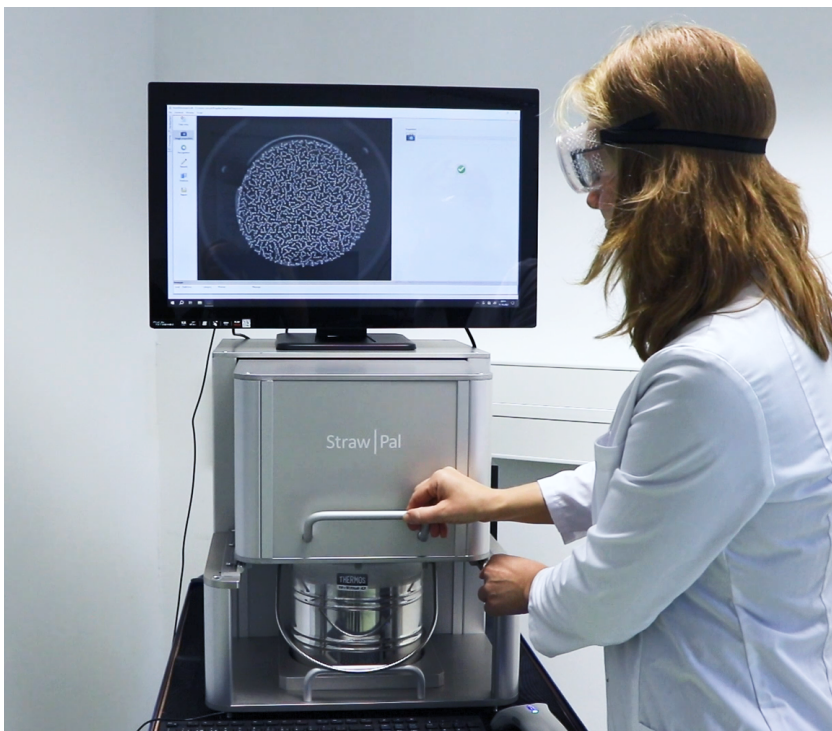


⚙️ Product features

- Dimensions (StrawPal without accessories): 490 x 750 x 505 mm (W x D x H)
- Monitor can be placed on top of the StrawPal, we recommend placing the keyboard and mouse on the lab bench
- Weight: 35 kg
- Dewar volume: 3 l
- Depending on handling, liquid nitrogen in the dewar lasts for several hours
- Power supply: 100-240 V ~50/60 Hz

⚙️ System includes

- StrawPal
- Mini PC
- Touchscreen monitor
- Keyboard
- Mouse
- Dewar vessel
- Goblet holder



more
information