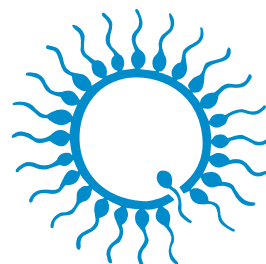




CANINE

assisted reproduction technology



minitube
our knowledge, your success

Minitube: proven quality since 1970



Dear valued customers,

Minitube is totally committed to quality – this is at the core of everything that we do.

For our worldwide client base, we recognize that reliability, functionality and efficiency are key factors for running a stress-free and profitable production system. For over 50 years Minitube has delivered robust, high-performance, quality equipment and consumables to the assisted reproduction market.

As an industry leader, we accept the responsibility of providing products that do not compromise quality or safety. For this reason, all proprietary consumables and semen or embryo preservation media are manufactured in our own dedicated state-of-the-art facilities, supported by extensive in-house and external third-party QA testing you can trust. Minitube quality is not subjective but based on hard facts and decades of a successful track record.

Our total quality approach is underpinned by a long-term partnership strategy with our suppliers and customers. These long-standing relationships help build the trust and understanding required to ensure ongoing quality.

The same is true for our service team who are always striving to provide the best service within the industry. As a customer, the expert knowledge and know-how of Minitube staff is always available to you.

Moving forward we promise to continue researching and developing the best products and providing the best service, just as we have for more than 50 years.

Dr. Christian Simmet
CEO





Minitube online media library:
All catalogs digitally available in
different languages

CONTENT

1	Semen collection	02
2	Semen evaluation	04
3	Semen dilution	09
4	Liquid semen transport and storage	11
5	Semen straw processing	13
6	Semen freezing and cryostorage	17
7	Insemination and diagnostics	21
8	Training and education	28

1 SEMEN COLLECTION



Electro-ejaculator

Electro-ejaculator set, consisting of heavy-duty carrying case, control unit, battery, and transformer/charger.

Product features

- Digital display and adjustment of the voltage in 0.5 volt steps
- Fully portable with remote control
- Pulse/pause ratio adjustable manually
- Power output with 3 different curves enabling balanced setting according to the animal's size and sensitivity
- Power supply: 115 V/60 Hz or 230 V/50 Hz

Electro-ejaculator [1]

11900/0000



Accessories

Electro-ejaculator probe

3/8", Ø 0.95 cm, length: 22 cm [2]

11900/0509

1/2", Ø 1.27 cm, length: 22 cm [3]

11900/0510

Semen collection set for electro-ejaculator [4]

11900/0250



Canine collection system

Convenient collection system that includes 3 color-coded funnels (red, white, and blue) and 4 semen collection vials (Ref. 17500/0202).

Product features

- Color-coded funnels to divide the different ejaculate fractions: dividing the fractions is useful in preventing unwanted bacteria and contaminations by prostatic fluid
- Allows examination of stud dog penis while being collected
- Spill-proof funnel design prevents accidents during the collection process
- Non-spermicidal materials are easy to clean, sterilize and re-use
- Samples are immediately ready for analysis, centrifugation or further processing

Canine collection system

for small breeds (height of funnel without spout: 5.5 cm) [1] **17500/0203**

for all breeds (height of funnel without spout: 7.5 cm) [2] **17500/0200**

Accessories

Semen collection vial, 15 ml, graduated, plastic, with lid, 17 x 120 mm, 50/bag [3] **17500/0202**

Semen collection glove, blue, nitrile, extra sensitive, sperm safe, latex-free, powder-free, 100/box [4]

size M **11128/0055**

size L **11128/0060**

size XL **11128/0065**

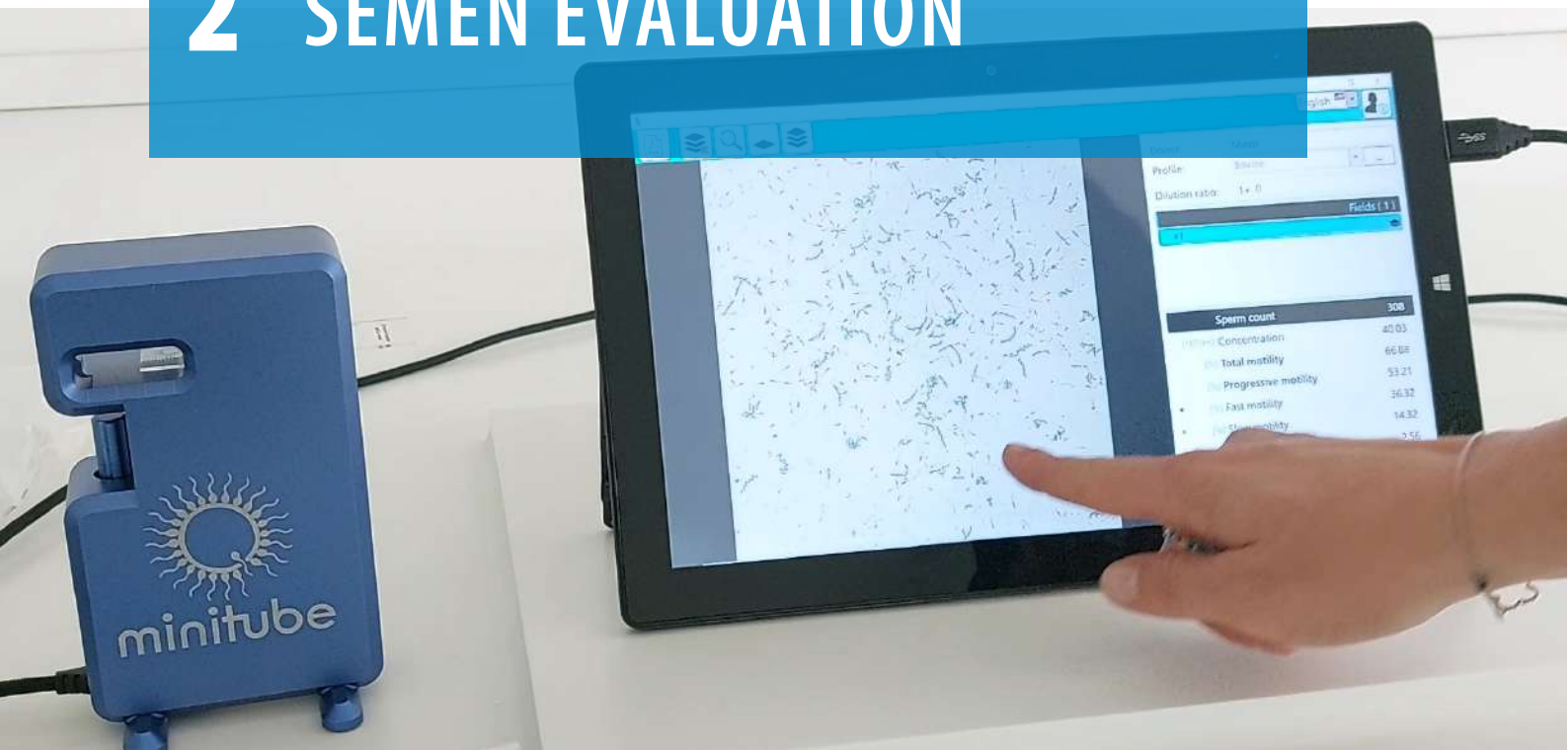
ReproJelly, non-spermicidal lubricant, water soluble, tube with 100 ml, resealable [5] **11907/0100**

Alternative

Semen collection funnel, disposable, 100/box [6] **11521/0000**



2 SEMEN EVALUATION



AndroScope

AndroScope is a **compact mobile CASA system** that is based on AndroVision® and allows the operator to analyze semen motility and concentration of various species at any point in the production, transport, and insemination process.

AndroScope is equipped with a professional high-speed camera and a robust focus adjustment for precise semen analysis. The heating unit in the analysis area of the mobile CASA reaches +37°C within a few seconds, so that semen analysis is performed at optimal temperature conditions. AndroScope works with every PC, laptop, or tablet where MS Windows 10 or newer is installed (USB-3.0 plug is necessary to connect the device).

A practical, robust carry case provides optimal protection for the transport and contains everything you need to perform a semen analysis.



1

AndroScope [1] incl. transport case and accessories **12500/3000**

Accessories

Disposable counting chamber Minitube, 20 µm, 4 chambers, 25/box **12050/0220**

Test tube 2 ml with cap, 250/bag **14602/0904**

Disposable capillary tube, 100/bag **15404/0100**

Microfiber rod, length 124 mm, 100/bag **12510/0106**

Option: Mobile warming unit, for 6 reaction vials and 1 slide [2] **12057/6000**



2



more
information

AndroVision®

This **highly precise, automated system for computerized semen analysis** stands out for the integration of the classic CASA analysis with more advanced assays for sperm functionality. Concentration and motility as well as acrosome integrity, viability, mitochondrial activity, and DNA integrity can be assessed accurately and quickly with up to 1000 cells per field, making AndroVision® the perfect tool for the **objective and complete semen evaluation**.

The user interface is straightforward and easy to understand: **only three clicks from start to analysis result**. An optional touch screen interface and barcode scanner enhances the system for even quicker and more efficient application.

AndroVision® software

with PC and monitor [1]	12500/0000
with PC, touch screen and barcode scanner	12500/0001
with laptop	12500/0010

AndroVision® high speed color camera [2]	12500/4400
--	------------

Product features

- Real time analysis of live images and video files
- Analysis of up to 4 fields in 20 seconds
- Highly efficient particle filter for accurate sperm identification
- Analysis profiles for many species
- Adjustable analysis parameters and user created profiles
- Data export to MS Excel and other programs
- Languages: English, German, Spanish, Chinese, Portuguese, Russian, French

Accessories

Phase contrast microscope Zeiss Axiolab 5* [3]	12008/0020
--	------------

ScanStage, automated microscope stage with integrated heating system [4]	12048/0031
--	------------

Controller HTi 200 [5]	12057/0200
------------------------	------------

Warming plate, 245 x 200 mm [6]	12057/0510
---------------------------------	------------

* Other microscopes from our product portfolio can also be used with AndroVision®. Please contact us for an individual offer.



AndroVision® software modules

Module Morphology and Morphometry	12500/1300
Module Viability*	12500/1400
Module Acrosome Integrity*	12500/1600
Module Mitochondrial Activity*	12500/1700
Module DNA Integrity*	12500/1800

* Requires fluorescence microscope.



more
information

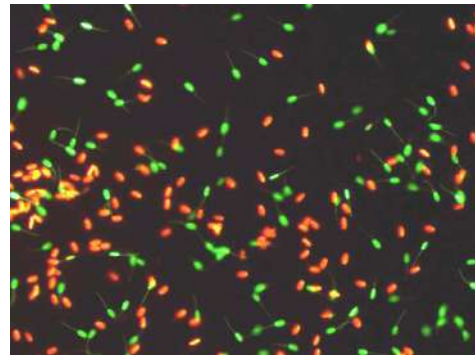
SpermVision® SAR

Highly efficient, flexible, and sophisticated digital tool for evaluating sperm cells in small animal reproduction. Concentration, motility, morphology, and viability can all be accurately assessed, making SpermVision® SAR an essential tool for everything from donor evaluation to semen processing.

The user interface is straight forward, easy to use and can be customized through the preference menu to suit individual needs. SpermVision® SAR ensures evaluation integrity of both new and archived records through a password protected multilevel operational system. These features and many more make SpermVision® SAR ideal for the small animal reproductive specialist.

System includes

- SpermVision® SAR software
- Rapid scan digital camera
- Zeiss AxioLab microscope, 10x, 40x phase objective, Turret condenser, phototube C-mount, integrated heated stage
- LD A-Plan 20x PH1 negative phase objective
- PC w/integrated LCD monitor
- Temperature control unit for heated stage with warming plate



SpermVision® SAR

12520/5000

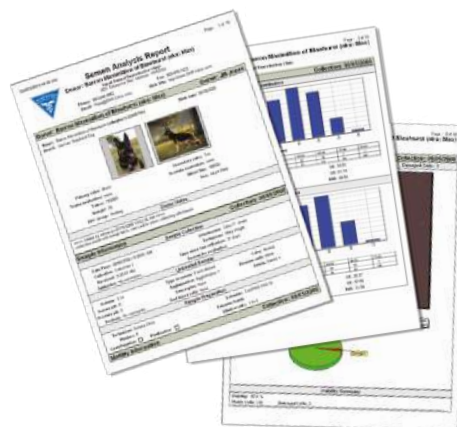
Optional upgrades

Upgrade to Research Version of SpermVision®; 12520/5010
includes comparative analysis report module, tank management module, all sperm motion characteristics, user defined settings

Comparative analysis report module for SAR; 12520/5020
allows for quick comparison of data from multiple ejaculates or evaluations of the same ejaculate over time; includes software, license, and USB hardware lock

Semen tank inventory management module for SAR; 12520/5030
allows semen inventory to be entered and tracked across multiple tanks; includes software, license, and USB hardware lock

Viability and fluorescence microscope upgrade for SAR*; 12520/6080
includes high resolution color camera, Zeiss C-mount adapter, Zeiss AxioLab A1 fluorescence LED light source, filter set and two port camera adapter



* Research Version upgrade required.



more
information

Microscopy supplies

Microscope slide, 76 x 26 mm, 50/box [1]	15400/2400
Cover glass, 18 x 18 mm, 100/box [2]	15401/0990
Immersion oil, 8 ml [3]	12000/0101
Lens cleaning tissue, 90 x 72 mm, 500/package [4]	15230/9100



Counting chambers (hemocytometers)

Thoma new	15150/4771
Neubauer improved	15152/4421
Bürker	15153/0000



Pipettor

Adjustable single channel pipette, yellow, autoclavable, 10 - 100 µl	12425/4810
Pipette tip, 10 - 100 µl, yellow, 1000/bag	12425/9409



Photometer SDM 1

Product features

- Raw semen samples can be used without dilution
- Semen concentration is displayed in 10^6 sperm/ml
- Electrical connection: with included mains adapter 100-240 V or batteries

Photometer SDM 1, calibrated for canine semen [1]	12300/0103
---	------------

Accessories

Microcuvette for SDM 1, 100/box [2]	12300/1111
Multispecies software, for reprogramming to other species	12300/0130



PROVEN ACCURACY

SDM 1 is a compact, highly precise photometer for measuring sperm concentration. Cleaning is simple, maintenance is minimal.

Phase contrast microscope CX 43

Product features

- Phase achromat optics with universal condenser
- Heated microscope stage with temperature control unit HTi 200 and additional warming plate (180 x 180 mm)
- Integrated LED illumination
- Ergonomic design

Phase contrast microscope CX 43, with phototube (trinocular), objectives 20x, 40x **12005/0042**



Wide range of microscopes and accessories available!

Phase contrast microscope MBL

Functional microscope for semen analysis with heating system and control unit for freely adjustable temperature.

Phase contrast microscope MBL 2000

binocular, heated stage, HTi 50, objectives 10x, 40x, 100x **12010/3000**

binocular, heated stage, HTi 50, objectives 10x, 40x, 100x, with camera and monitor [1] **12010/3050**

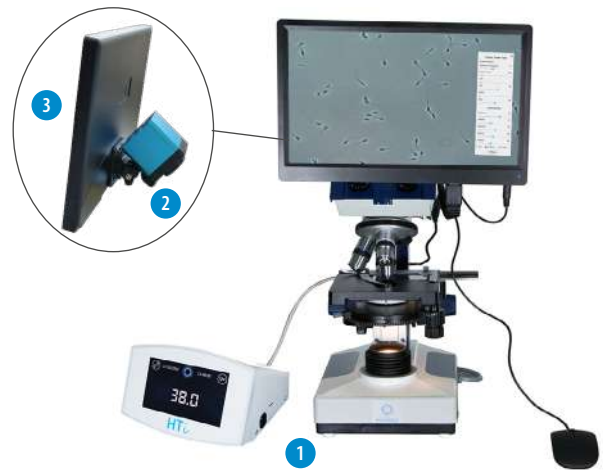
Phase contrast microscope MBL 2100

trinocular, heated stage, HTi 50, objective 20x **12010/3103**

trinocular, heated stage, HTi 200, objective 20x, with camera and monitor **12010/3101**

Digital color camera for microscopes, with integrated image display software [2] **12110/1600**

Monitor 11.6" with HDMI input [3] **12110/1610**



Semen stains

Spermact, stain for morphology analysis, 4 x 50 ml [1] **15405/0000**

Farely stain, for morphology analysis, 3 x 250 ml [2] **15405/0026**

Eosin G, 2% solution for supravital staining, 50 ml [3] **15405/0025**

Nigrosin, 4% solution for supravital staining, 50 ml [4] **15405/0029**



3 SEMEN DILUTION



CaniPlus Chill ST

- Short-term culture medium for canine semen (≤ 5 days)
- Ideal for short-term shipping
- Animal protein free

CaniPlus Chill ST, 20 ml [1]

13700/0040

CaniPlus Chill LT

- Long-term culture medium for canine semen (≤ 10 days)
- Ideal for international and domestic shipping
- Animal protein free

CaniPlus Chill LT, 20 ml [2]

13700/0045

CaniPlus Chill 10

- Long-term culture medium for canine semen (≤ 10 days)
- Ideal for international and domestic shipping
- Requires addition of fresh egg yolk

CaniPlus Chill 10, 20 ml [3]

13700/0025



CaniPlus Freeze One-step

- One-step culture medium for freezing canine semen
- Requires addition of fresh egg yolk
- Contains glycerol

CaniPlus Freeze One-step, 20 ml [1]

13700/0060

CaniPlus Freeze Two-step

- Two-step culture medium for freezing canine semen
- Requires addition of fresh egg yolk
- Fraction B contains glycerol

CaniPlus Freeze Two-step, 20 ml [2]

13700/0065

CaniPlus AI

- Culture medium for thawing canine semen and for artificial insemination (AI)
- Contains motility enhancing ingredients
- Ideal for all AI, especially when using poor quality or low volume semen
- Animal protein free

CaniPlus AI, 20 ml [3]

13700/0070

HIGH SEMEN PRESERVATION PERFORMANCE

CaniPlus extenders protect the sperm cells from damage caused by temperature variations during storage and shipping. The exclusive use of pure and certified ingredients and our strict quality control ensure safe and reliable products.



Water bath

- Electronic temperature control, stainless steel, with grid and lid
- Working temperature range: minimum 5°C above ambient up to +100°C (depending on ambient pressure)
- Intuitive 3.5" color graphic display with touch screen
- Inner dimensions: 267 x 200 x 207 mm (L x H x D)
- Outer dimensions: 349 x 378 x 289 mm (L x H x D)

Water bath, 10 l

230 V

14079/0001

110 V

14079/0002



Many other
water
bath sizes
available!

4 LIQUID SEMEN TRANSPORT AND STORAGE



Plastic vials

Plastic vial, 13 ml, with graduation, round bottom

with screw cap, sterilized, 100/bag [1] 17230/6001

without cap, 100/bag 17230/6000

⚙️ Accessories

Screw cap, for 13 ml plastic vial, 1000/bag [2]

white 17230/6054

red 17230/6055

blue 17230/6056

violet 17230/6057

green 17230/6058

yellow 17230/6059



Disposable syringes

Disposable syringe, Luer mount, all plastic, sterilized

1 ml, 100/package 19801/0001

2 ml, 100/package 19801/0002

5 ml, 100/package 19801/0005

10 ml, 100/package 19801/0010

20 ml, 100/package 19801/0020



IMPROVE YOUR CO₂ FOOTPRINT

The Jute transport box is a sustainable, space-saving, and functional packaging solution. The inlays are 100% compostable.

Jute transport box

Product features

- Made of Jute, a naturally renewable raw material
- Holds constant temperature for up to 30 hours
- Includes cardboard box, Jute inlays, 2 cool packs and 2 plastic tubes (50 ml)
- Outer dimensions: 200 x 185 x 200 mm (W x D x H)

Jute transport box

17229/0001



Neopor transport box

Product features

- Made of highly insulating Neopor
- Holds constant temperature for up to 45 hours
- Includes Neopor transport container, cardboard box, 2 cool packs, 5 ml syringe, 10 ml syringe, 2 protecting caps for syringe, 2 plastic tubes (13 ml), 1 vial (50 ml)
- Outer dimensions: 290 x 290 x 180 mm (W x D x H)

Neopor transport box

17229/0005



Product not for sale in the US and Canada

Styrofoam transport box

Product features

- Designed to maintain chilled canine semen at approx. 4°C (± approx. 3°C) inside the container for approx. 45 hours based on an ambient temperature of +22°C
- Includes ultra-dense Styrofoam container, cardboard container cover, 2 ice packs (re-freezable), 2 buffer tubes for semen or extender (13 ml), 2 conical bottom tubes (50 ml) as protector for 13 ml tubes, 5 ml syringe, 10 ml syringe
- Outer dimensions: 310 mm x 310 mm x 190 mm (W x D x H)

Styrofoam transport box

17229/0010



Product only for sale in the US and Canada

5 SEMEN STRAW PROCESSING



Semen straws

For over 30 years, Minitube straws have been used worldwide as a standard for the freezing of semen. Minitube's quality control process, production techniques, and material selection ensure for a **reliable product** that consistently exceeds industry standards.

EcoStraws feature a wick with a shorter inner wick section that **absorbs 3 to 4% fewer sperm** than the corresponding symmetrical wick of standard semen straws. They are ideal for overnight equilibration of semen at refrigerated temperatures. EcoStraws are used in exactly the same way as standard semen straws.

MiniStraw, 0.25 ml, clear, 2000/bag	13407/0010
Medium Straw, 0.5 ml, clear, 2500/bag	13408/0010
EcoStraw, 0.25 ml, clear, 2000/bag	13407/3010
EcoStraw, 0.5 ml, clear, 2000/bag	13408/3010



Semen straws are available in many different colors and pre-printed upon request.



All Minitube straw options

MPP Uno



more
information

Seals and fills 1 straw per cycle – ideal for handling small volumes.

Product features

- Automatic filling and sealing machine for 0.25 and 0.5 ml straws
- Capacity: approx. 4000 straws/hour
- Fast, tool-free conversion between 0.25 and 0.5 ml straws and vice versa (1-2 minutes)
- Exchangeable hopper, capacity: 2400 MiniStraws (0.25 ml) or 1200 medium straws (0.5 ml)
- Ultrasonic sealing unit, ultrasonic generator in an external casing that can be installed at up to 2.5 m (ON/OFF switch directly on the machine)
- Designed to provide ideal conditions for hygiene and safety
- Can be operated in cold room or cabinet or at room temperature as stand-alone or combined with MiniJet printer (CombiSystem)
- Very compact device which takes up little space; machine dimensions: 460 x 350 x 410 mm (W x H x D) plus ultrasonic generator
- Vacuum unit with integrated reservoir and automatic readjustment function; vacuum level can be easily modified via buttons
- PLC microprocessor control
- Power supply: 110 V/60 Hz or 230 V/50-60 Hz



MPP Uno, complete [1]

13017/0000

Accessories

Filling nozzle for MPP Uno [2]

for 0.25 ml straws

13017/0012

for 0.5 ml straws

13017/0017

Suction nozzle for MPP Uno [3]

for 0.25 ml straws

13017/0022

for 0.5 ml straws

13017/0027

Straw hopper, for 0.25 and 0.5 ml straws [4]

13018/0006

Washer for 0.25 ml and 0.5 ml nozzles, 5000/bag

13021/3001

Filling and suction tubing, 380 mm, sperm friendly material (silicone), angle cut edge, 100/aluminum foil bag

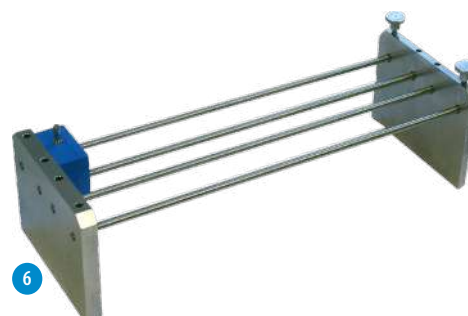
13021/3800

Disposable semen cone, 100/bag [5]

13018/0100

Fixing unit for filling and suction blocks, stackable, stainless steel [6]

13017/0050



EasyCoder

Clean and odorless printing of straws without ink and solvent.



more
information

Product features

- Thermal transfer printer with automatic straw supply (output: up to 3600 straws per hour) for immediately abrasion-resistant print
- Unparalleled precise and clear printing on 0.5 and 0.25 ml straws; easy and quick conversion between different straw sizes
- Prints up to 3 lines per straw, including barcodes, logos, and special characters
- Control via PC by a clear and user-friendly Minitube software
- Easy handling, little maintenance required
- Dimensions (L x W x H): 660 x 370 x 310 mm (PC not included)
- Power supply: 110 V/50-60 Hz or 230 V/50-60 Hz

EasyCoder printer 13038/0000

Thermal transfer ribbon, black 13038/0010



MultiCoder

Quick and easy machine-readable labeling of lab items.

Product features

- High resolution inkjet printing
- Print head protection system (avoids drying out of ink)
- Wide variety of product carriers
- No tools needed for change of product carriers
- Pre-designed print layouts
- Loads excel files for printing
- Easy drag & drop editing of print layouts

+ Your benefits

- + Very versatile: print system can label most kinds of materials such as plastics, glass, or aluminum
- + Manually moveable slide and a unique, easy-to-use carrier system allow for a speedy work process
- + Easy printing of information on the smallest amount of space, including text, barcode, QR-Code, and logo

MultiCoder printer 13145/0000



Semen straw processing

UNIQUE, FLEXIBLE & VERSATILE

Quick and easy print on a whole range of items: semen straws, goblets, cassettes, culture dishes, Macrotubes, syringes, cryovials and many more.



more
information

CryoSealer

Manual sealer using ultrasound technology. Can be used for 0.25 and 0.5 ml straws. Ultrasound welding facilitates a perfect and uniform seal of each straw. Power supply: 100–240 V AC/50–60 Hz.

CryoSealer

13135/0000



Manual sealer

Manual sealer for straws, securely seals all kinds of straws by applying heat at the end of the straws (also in liquid nitrogen vapor). Consists of a plier welding head adapted for straws and a control unit for varying heat level.

Manual sealer

13135/2500



Manual ball sealer

0.5 ml straws are individually sealed with balls.

Manual ball sealer

13136/0100

Accessories

Sealing balls, 1000/package

glass, for 0.25 ml*

13400/997x

metal, for 0.25 ml

13400/9970

glass, for 0.5 ml*

13400/0x00

metal, for 0.5 ml

13400/9900

* Various colors available.



Micropipettor

Micropipettor for filling of straws with semen. Easy and precise pipetting by handling wheel, for all sizes of capillary tubes up to 1 ml.

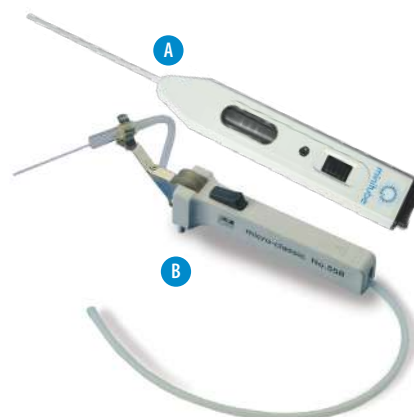
Micropipettor

Model A

19022/0000

Model B

19022/0002



6 SEMEN FREEZING AND CRYOSTORAGE



Freezing units

Minitube freezing units are compact and easy to handle. They are made of a high-quality Styrofoam box, an inner container of stainless steel and a floating rack. The stainless-steel container is filled with liquid nitrogen. The rack keeps the needed distance between 0.5 ml or 0.25 ml straws during the first down phase, while it floats on liquid nitrogen. After that, the straws get manually immersed into the nitrogen.

Product features

- Distance between straws and liquid nitrogen level can be adjusted
- Fits 0.5 ml and 0.25 ml straws
- Low nitrogen consumption
- High quality Styrofoam chest and stainless-steel inner box
- Easy transport

Freezing unit

for 20 straws [1]	15043/0636
for 90 straws [2]	15043/0736

Accessories

Loading block for 90 straws floating rack	15043/0738
---	------------

Additional rack

for freezing unit for 20 straws [3]	5015043/0600
for freezing unit for 90 straws [4]	5015043/0900



Automatic freezer IceCube 14S

Computer controlled freezer, with comfortable data input and automatic recording of the freezing curve.

Product features

- Temperature range: +40 to -180°C
- Freezing rates: 0.01 to 60°C/min
- Heating rates: 0.01 to 15°C/min
- Display accuracy: 0.01°C
- Temperature measurement via 2 Pt-100 resistance thermometers
- Capacity: approx. 900 x 0.5 ml straws per freezing cycle
- Software for freeze programming and control: unlimited storage of programs and processed files, color graphic display of all temperature curves, wide possibility of parameter settings
- Dimensions: 540 x 420 x 520 mm (L x W x H), weight: 29 kg

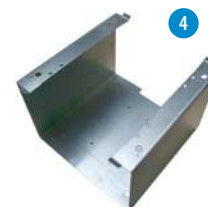
IceCube 14S, with connector kit for LN₂ pressure container

with 10" tablet [1]	16821/3000
with 12" touch screen monitor*	16821/2000
without screen*	16821/1000

Accessories

Rack for IceCube 14S, for 36 straws [2]	16821/5036
Loading device for straw rack	16821/5037
Handling rack for IceCube 14S [3]	16821/5030
Spacer for IceCube 14S [4]	16821/5018
LN ₂ pressure container, 60 l	16820/1900
Roller base for LN ₂ pressure container	16501/0204
Pliers for racks [5]	16821/5031

* To connect to own PC or laptop.



Goblets

Goblets [1]

Ø 7.1 mm	white	16907/0071
Ø 10 mm	white*	16910/0010
Ø 13 mm	white*	16913/0133
Ø 35 mm	white	16935/0135
Ø 53 mm	white	16953/0133
Ø 65 mm	white	16965/0133
hexagonal	white	16970/0136

* Various colors available.

Accessories

Goblet canes [2]

for 2 x 7.1 mm goblets	16965/6171
for 2 x 10 mm goblets	16965/6000
for 2 x 13 mm goblets	16965/6013

Marking label for goblet canes, different colors 13422/00xx

Divider for goblets, 100/bag, 12 x 6.5 cm [3] 16967/0065

Identification rod, 140 mm length

for 0.25 ml straw	16903/0210
for 0.5 ml straw	16903/1210

Stainless steel funnel for 65 mm goblets [4] 15004/0402



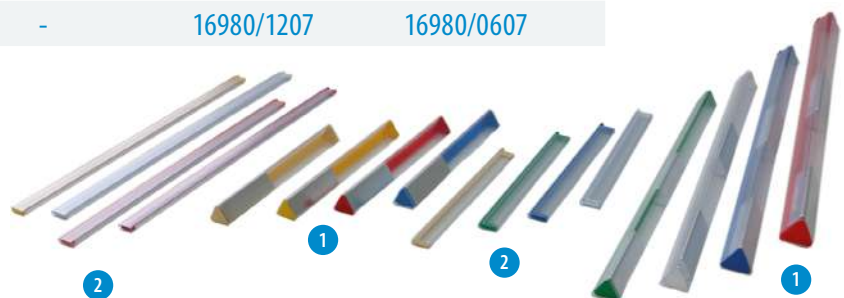
Semen freezing and
cryostorage

Cassettes for straw storage

	Triangular cassette [1]*		Flat cassette [2]**	
	long	short	long	short
green	16981/01351	16981/01201	16980/1201	16980/0601
blue	16981/01361	16981/01211	16980/1202	16980/0602
yellow	16981/01371	16981/01221	16980/1203	16980/0603
red	16981/01381	16981/01231	16980/1204	16980/0604
white	16981/01391	16981/01241	16980/1205	16980/0605
beige	16981/01401	16981/01251	16980/1206	16980/0606
orange	-	-	16980/1207	16980/0607

* For 10/20 straws 0.5 ml or 28/56 straws 0.25 ml.

** For 3/6 straws 0.5 ml or 6/12 straws 0.25 ml.





Further
cryostorage
container
options/sizes

Cryostorage container

- With 6 canisters 279 x 38 mm
- Normal working duration: 175 days
- Neck opening: 55 mm
- Overall height: 690 mm
- Capacity: 3732 x 0.5 ml straws
- Full weight: 42 kg

MVE Cryo container ET 35, volume: 36 l

16503/3606



Vapor Shipper

- 1 canister 278 x 67 mm
- Static holding time: 13 days
- Static evaporation rate: 0.26 l/day
- Capacity: 938 x 0.25 ml/440 x 0.5 ml straws (1 level bulk)
- Neck opening: 70 mm
- Height: 468 mm
- Diameter: 222 mm

MVE Vapor Shipper SC 4/2 V, volume: 3.6 l [1]

16504/2001

- 1 canister 278 x 46 mm
- Static holding time: 21 days
- Static evaporation rate: 0.20 l/day
- Capacity: 452 x 0.25 ml or 210 x 0.5 ml straws
- Neck opening: 51 mm
- Height: 492 mm
- Diameter: 222 mm

MVE Vapor Shipper SC 4/3 V, volume: 4.3 l [2]

16504/3001

Protective shipping container, for Vapor Shipper,
made of plastic, IATA compliant [3]

16504/3010



CryoCube™ Dry Shipper

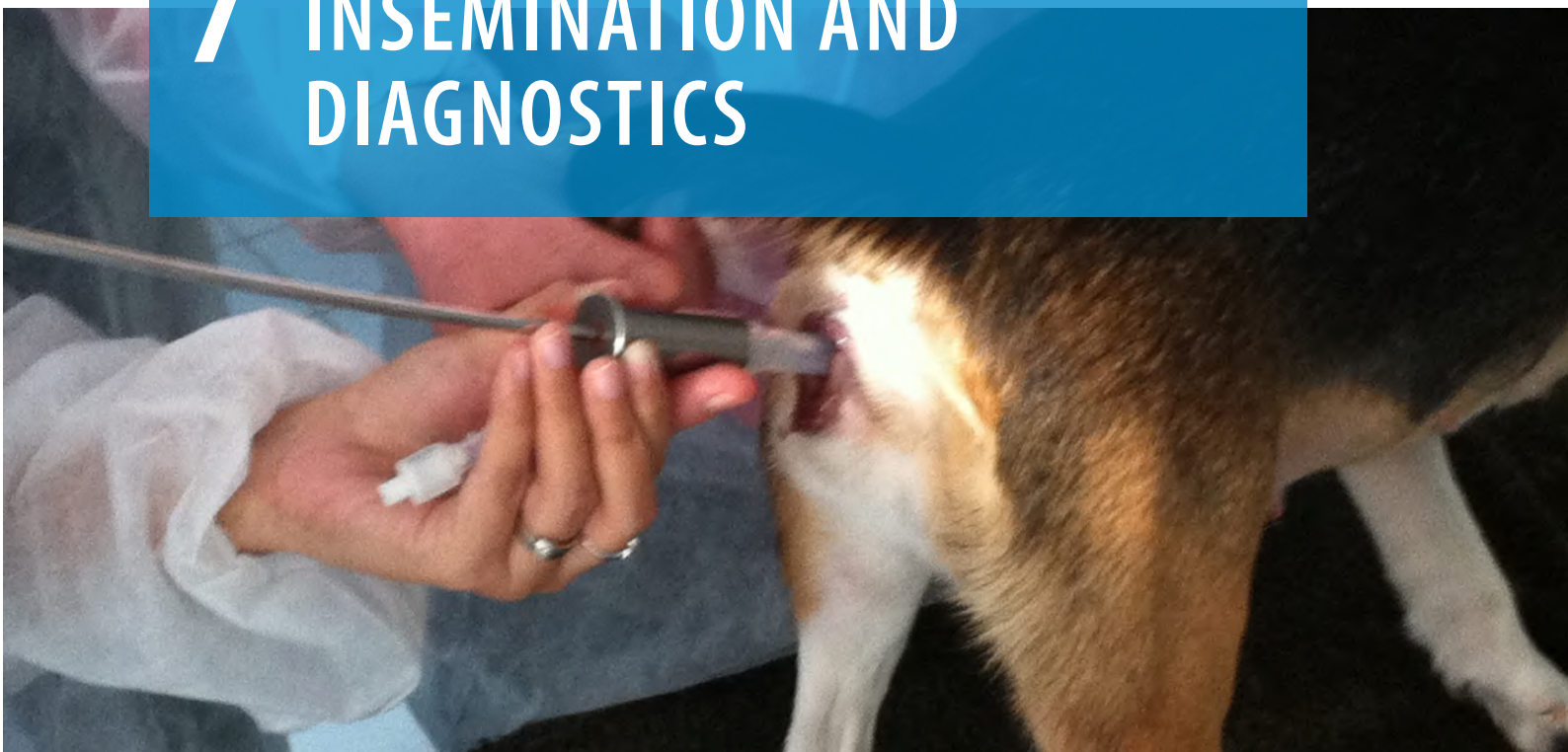
- 1 canister 127 x 35 mm
- Static holding time: 5 days
- Capacity: 182 x 0.25 or 88 x 0.5 ml straws
- Neck opening: 35 mm
- Height: 305 mm
- Diameter: 305 mm

CryoCube™ Dry Shipper

16505/0100



7 INSEMINATION AND DIAGNOSTICS



MAVIC canine vaginal AI catheter

⚙️ Product features

- Designed to mimic the natural breeding process
- Available in three sizes to accommodate a variety of breeds
- Stainless steel spine with protective sheath to enhance rigidity
- Luer lock injection port with reflux check valve
- Inflatable balloon prevents unwanted back flow of semen
- Balloon equipped with monitoring pilot and Luer lock check valve

MAVIC AI catheter, sterilized, single use, 1/package

large, CH 36, for large to giant sized dogs, 17500/0055
length: 400 mm, with 10 ml syringe [1]

medium, CH 18, for small to medium sized dogs, 17500/0050
length: 250 mm, with 5 ml syringe [2]

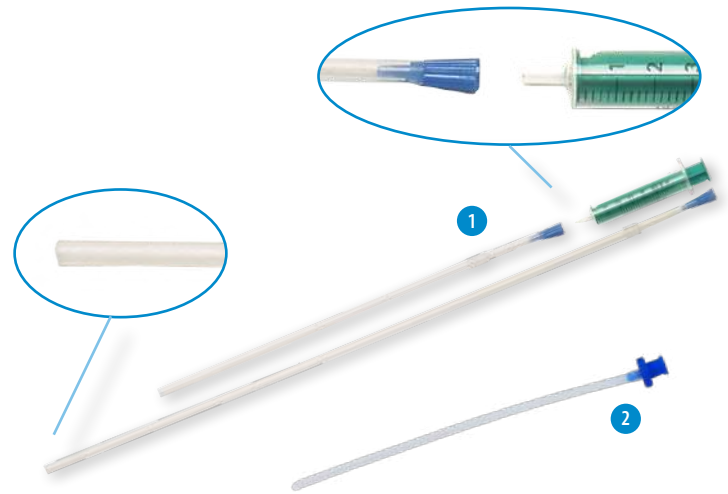
small, CH 18, for toy and small sized dogs, 17500/0052
length: 120 mm, with 5 ml syringe [3]



AI pipette for dogs

Rigid plastic pipette with piece of tubing and Luer adapter.

AI pipette [1]	
length: 22 cm, 20/package	17500/0010
length: 22 cm, 1/package, sterilized	17500/0020
length: 44 cm, 10/package	17500/0045
length: 44 cm, 1/package, sterilized	17500/0040
Semen transfer adapter for syringe,	17229/0020
length: 13 cm, 10/bag [2]	



MiniThaw thawing unit

Product features

- Variable temperature setting (ambient to +50°C)
- Digital display of current temperature
- Straw lift has three compartments and allows thawing of up to 10 straws at a time (0.5 ml or 0.25 ml)
- Can be used in the car (12 V/24 V) or plugged into the wall socket (110/230 V)
- Robust and easy to handle

MiniThaw [1]	17048/0000
--------------	------------

Accessories

Transformer for thawing unit 12 V/110 V/220 V	17165/1395
Base for MiniThaw, metal [2]	17048/0005
Digital timer, magnetic, battery included [3]	17048/0006



MiniCutter

- Precise cutting of 0.25 and 0.5 ml straws
- Facilitates straight cut at exactly the right length, which helps to avoid semen loss
- Ergonomic shape
- Easy to keep clean

MiniCutter for straws	17062/0010
-----------------------	------------



TCI FlexiLock endoscopes

Product features

- Unique FlexiLock coupling system combines HD camera and LED light into one streamlined hand piece, providing ergonomic and lightweight operation
- Clearer image, due to significantly more optical fibers than most fiber-optic endoscopes
- Rigid design available with dual angled side ports
- Available in three different sizes to easily catheterize small to large canine breeds

TCI FlexiLock endoscopes

length 15 cm, working channel CH5 [1]	17505/0201
length 35 cm, working channel CH8 [2]	17505/0203
length 50 cm, working channel CH8 [3]	17505/0205

FlexiLock hand piece , full HD camera and integrated LED illumination, for FlexiLock endoscopes, requires CCU [4]	17505/0215
--	------------



Traditional TCI endoscope

Product features

- Angular optical eyepiece, autoclavable
- Dual right-angled side ports
- Easy access to the cervix and uterus in dogs of all sizes, also toy breeds
- Working channel (CH 5) enables insertion of instruments under direct visualization for insemination, biopsy and flushing

Traditional TCI endoscope [5]	17505/0101
--------------------------------------	------------

Camera head full HD Zoom , focal length 14.25-28 mm, for traditional TCI endoscope, requires CCU [6]	17505/0210
---	------------

LED high-performance light source , 180 W [7]	23700/3200
--	------------

Fibre optic light cable , Ø 3.5 mm, length 3000 mm [8]	23700/3250
---	------------

Accessories for all endoscopes

FlexiVision® HD Camera Control Unit (CCU) , required for FlexiLock hand piece and FlexiVision® Full HD camera, with digital zoom, USB for full HD photo capturing, to be connected to a monitor [9]	17505/0220
--	------------

High-resolution color monitor [10]	18000/0191
---	------------



Transcervical catheters

Product features

- Clear markings every centimeter with additional indicators every 5 cm
- Supple material reinforced by a removable stylet for easy insertion
- Adapter for syringe included
- Single packed

TC cannulas with single port (70 cm), eye is 0.5 cm from tip to prevent blockage

CH4	17500/0004
CH5	17500/0005
CH6	17500/0006
CH8	17500/0008

TC cannulas with dual port (70 cm), additional eye (approx. 2 cm from tip and rotated 60°)

CH4	17500/0024
CH5	17500/0025
CH6	17500/0026
CH8	17500/0028

TCI shunt system

The Minitube shunt system for transcervical insemination is a dual-purpose endoscopic tool. It eliminates vaginal air loss around the endoscope during insufflation by creating an airtight seal. The shunt system also acts as a stabilizing platform for the endoscope during the procedure.

Shunt system contains: Stainless steel shunt, silicone catheter 55 mm, silicone catheter 105 mm, O-rings, syringe 50 ml, manual.

TCI shunt system

for TCI FlexiLock endoscopes	17500/0060
for traditional TCI endoscope	17500/0065

Shunt catheter

55 mm	17500/0062
105 mm	17500/0064
150 mm (for scopes >35 cm)	17500/0067
250 mm (for scopes >40 cm)	17500/0068

PAINLESS AND NON-INVASIVE

The benefits of using endoscopic transcervical insemination come from being able to achieve the same or better results without the need and risks of general anesthesia and surgery.



Shunt system applied to FlexiLock endoscope

Vaginal speculum

Product features

- Halogen light for consistent long-lasting illumination
- Fiber optics provide cool distal ring of light – no reflections, no obstructions
- Autoclavable stainless steel for convenience and durability
- Hinged window with neoprene seal to avoid fogging during insufflation
- Graduated tube with removable tip
- Available in 4 lengths to accommodate all canine breeds

Vaginal speculum, stainless steel, with inner insertion rod [1]

11 x 100 mm	17506/0110
11 x 250 mm	17506/0111
15 x 250 mm	17506/0112
19 x 350 mm	17506/0113

Accessories

Lithium-ion rechargeable power handle, 17210/0010
110 min on-time between charging, low battery indicator light, no need to discharge between charging cycles, lightweight, durable, ergonomic [2]

Manual insufflation pump [3] 17505/0010



Vaginal specula set Hannover

Product features

- Vaginal specula set of 3 different sizes: diameter 8 mm, 10 mm and 15 mm; length 150 mm
- Blunt obturator included
- Light source (3.5 V Halogen)
- Handle with charger for light source
- Scratch-resistant rotatable loupe, 1.6x magnification
- Stainless steel

Vaginal specula set Hannover [1] 17500/0120

Accessories

Handle for vaginal specula set, charging of the battery via USB [2] 17500/0125

Halogen light source for vaginal specula set, scratch-resistant rotatable loupe, 1.6x magnification, 3.5 V [3] 17500/0130



Bertha, canine AI training model

Anatomically correct AI training female dog (Labrador) with silicone internals. Beginners can practice inseminations in a lifelike situation on the model before passing on to real animals. Training success is achieved easier and faster and injury in live animals is prevented.

Product features

- Compact and light-weight training model for easy transport and cleaning
- Several gynecological procedures can be trained, such as examination of the genital tract, vaginal insemination and endoscopic examination and insemination
- Scope of delivery: dog model, uterus in estrus with secondary folds and cervix (can be catheterized), pelvis, kidneys, vena cephalica, blood reservoir
- Measurements: 85 x 72 x 25 cm (H x L x W)
- Weight: 9 kg

Bertha, canine AI training model

22400/5100



Canine culture swab

Canine culture swab with introduction pipette, length: approx. 320 mm, disposable, individually packaged, sterilized, 10/bag.

Canine culture swab

17500/0350

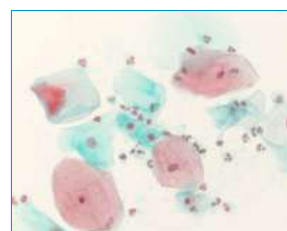


Shorr staining solution

Shorr staining solution for examining presence of cornification in epithelial cells of the female dog.

Shorr staining solution, 500 ml

15405/0080



Lubricant ReproJelly

Iso-osmotic and sperm friendly, supports the sperm cell viability. Ideal viscosity to better coat gloves, AI equipment and instruments.

ReproJelly, non-spermicidal lubricant, water soluble

tube with 100 ml, resealable [1]

11907/0100

3 l canister, without dispenser [2]

11907/3000

Dispenser for ReproJelly canister

11907/3100



MiniReader, progesterone determination

Determining the optimal time for insemination is one of the most critical steps for successful breeding. The MiniReader is an affordable, accurate and reliable device to read and provide the results of Minitube's ELISA (enzyme-linked immunosorbent assay) test within 35 minutes. It is used with the ELISA test kit.

+ Your benefits

- + Two areas of application: detection of ovulation and determination of the ideal time for artificial insemination or natural breeding
- + Small sample is needed (0.02 ml of blood serum)
- + Fast and accurate results in just over half an hour for immediate assessment – any day of the week
- + Accurate and consistent readings as absolute progesterone concentration is shown in ng/ml (not only relative readings of 'high' or 'low')
- + Small device fits anywhere
- + Size of test kit adapted to the needs of veterinarians
- + Easy handling and maintenance

MiniReader [1]

21900/0000

Accessories

MiniReader progesterone test kit, incl. Standard 1, 2, 3, reagents, washing solution and coated wells [2]

for 10 to 25 samples

21900/1110

for 24 to 60 samples

21900/1310

Warming unit for sample incubation during the ELISA reaction, for optimal conditions at +37°C and protected from light, well holder is transferred directly to the MiniReader after the ELISA reaction is finished [3]

21900/0100

Digital pipette, 20 – 200 µl

12427/3120

Pipette tips, 0.5 – 250 µl, 1000/bag

12427/0255



1



2



3

Insemination and
diagnostics



more
information

9 TRAINING AND EDUCATION



Training and education

Minitube offers specialized product training and educational seminars in assisted reproduction technologies worldwide. Individual and open seminars providing instructions in artificial insemination, transcervical insemination, semen analysis, semen processing and more are offered according to demand.

All training courses blend theoretical knowledge and practical experience, the latest technologies and practices are demonstrated and trained with the participants. Our instructors are well-respected experts in assisted animal reproduction.

The courses are interactive workshops where presentations, discussions, demonstrations, and practical exercise go hand in hand. Minitube training sessions offer useful troubleshooting tips, and the trainees benefit from the “learning by doing” approach. Participants receive valuable documentation and a certificate of participation. Minitube trainings are very flexible and available at Minitube premises, at partner facilities, at the customer site and virtually.

We are happy to find the best training option for you.

Please contact us: seminar@minitube.de







MINITUBE INTERNATIONAL

Servicing reproduction technologies worldwide

Minitube USA
800.646.4882
info@minitube.com

Minitub do Brasil
+55 51 3222 7876
minitub@minitube.com.br

Minitube India
+91 11 4309 0668
info@minitube-india.com

Minitube China
+86 185 1545 5770
info@minitube.cn

Minitub Ibérica
+34 977 845 397
info@minitub-iberica.com

Minitube Australia
+61 3 5342 8688
info@minitube.com.au

Minitube Central Europe
+421 377 877 915
mtce@minitube.sk

Minitube Canada
800.500.7978
info.canada@minitube.com

Mexitube Alemania
+52 442 246 73 46/47
info@mexitube.mx

Minitube Middle East
+971 426 68871
info.middle.east@minitube.com

Minitube Indonesia
+62 21 7591 75-96/94
info@minitube.co.id

Minitube International AG, Germany

+49 8709 9229 0
minitube@minitube.de

Follow us



www.minitube.com

