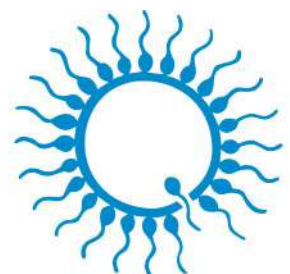




# SMALL RUMINANTS AND CAMELIDS

assisted reproduction technology



**minitube**  
our knowledge, your success

# Together for progress in assisted reproduction



**At Minitube, quality, service and innovation are at the heart of everything we do – ensuring solutions that truly meet your practical needs.**

As a third-generation family business, Minitube's 50-year history is built on a foundation of stability and trust. In a world focused on short-term gains, we are committed to sustainable growth and **your enduring success**.

This long-term focus is rooted in **scientific precision**. Our integrated team of veterinarians, biologists and engineers does not just create products; they develop the standards you rely on. The same experts deliver our **industry-leading service**, offering you direct access to practical application support and scientific advice.

We do not leave **quality** to chance. We take full responsibility by manufacturing our core products in our own state-of-the-art, ISO-certified facilities. Our media production is GMP-certified, and our quality control is uncompromising. This **rigorous control** is your assurance of safety, reliability, and consistent results.

Looking ahead, we remain committed to **pushing boundaries** – developing advanced products, improving workflows, and delivering exceptional technical service – **to help you succeed**, just as we have for more than five decades.

**Katharina Rohrmüller**  
CEO





Minitube online media library:  
Access all catalogs digitally,  
available in multiple languages.

# CONTENT

<b>1</b>	Semen collection	02
<b>2</b>	Semen evaluation	04
<b>3</b>	Semen dilution	10
<b>4</b>	Semen straw processing	13
<b>5</b>	Semen freezing and cryostorage	18
<b>6</b>	Insemination and diagnostics	22
<b>7</b>	Embryo transfer	29
<b>8</b>	Training and service	37

# 1 SEMEN COLLECTION



## ■ Electro ejaculator

**Electro ejaculator set**, consisting of heavy-duty carrying case, main device with remote controller and transformer/charger. Does not include probes which need to be ordered separately. Semen collection is **made easier**, especially from older animals that may be difficult to stimulate.

- Digital display and adjustment of the voltage in 0.5 volt steps
- Fully portable with remote control
- Pulse/pause ratio adjustable manually
- Power output with 4 different curves enabling balanced setting according to the animal's size and sensitivity
- Power supply: 115 V/60 Hz or 230 V/50 Hz

Electro ejaculator [1] 11900/0000

## ( ↻ Accessories

### Electro ejaculator probe

1", Ø 2.6 cm, length: 14.5 cm, angled design [2] 11900/0021

1", Ø 2.5 cm, length: 25 cm, straight design 11900/0031

2", Ø 5.6 cm, length: 33 cm [3] 11900/0022

Semen collection set for electro ejaculator [4] 11900/0250



1



2



3



4

## Artificial vagina for small ruminants

Robust tubular rubber casing with rounded openings. Valve assembly allows air to be added for adjustment of inner pressure. Consisting of corpus, valve, inner liner, latex collection cone, rubber bands, graduated collection vial in tulip shape (4 ml) and warming bag.

Artificial vagina, complete, 11 cm [1]	11320/0000
Latex inner liner, smooth [2]	11322/0002
Director cone, latex, length: 20 cm [3]	11024/0001



## Artificial vagina for camelids

Robust tubular rubber casing with rounded openings. Valve assembly allows air to be added for adjustment of inner pressure.

Artificial vagina casing with valve, 30 cm [1]	11021/0033
Latex inner liner, rolled ends, 650 mm	
smooth [2]	11022/0002
rough [3]	11022/0003
Semen collection vial, 8 ml, glass, double walled [4]	11023/0017
Silicone plug for the bottom of vial 11023/0017	11023/1593



## Accessories for all species

Semen collection vial, tulip shape, glass, graduated [1]	
2 ml	11323/0005
4 ml	11323/0004
8 ml	11023/0016
10 ml	11613/0010
Insulated warming bag [2]	11225/0026
Semen collection and AI glove, blue, nitrile, extra sensitive, sperm safe, latex-free, powder-free, 100/box [3]	
size M	11128/0055
size L	11128/0060
size XL	11128/0065
Thermometer for artificial vagina [4]	
up to +100°C, bimetal, non-breakable	11027/0000
up to +200°C, graduation 0.1°C, red filling	11027/0200



# 2 SEMEN EVALUATION



## AndroVision®

AndroVision® is a **highly precise, automated system for computer-assisted semen analysis**. It enables fast and accurate assessment of concentration and motility, analyzing up to 1000 cells per field. When combined with a fluorescence microscope, additional software modules expand the range of analysis options. The intuitive user interface makes operation simple: **just three clicks from start to result**.

### ★ Product features

- Real-time analysis of live images and video files
- Analysis of up to 4 fields within 20 seconds
- Highly efficient particle filter for accurate sperm identification
- Advanced image processing
- Lightmeter for illumination control
- Powerful algorithms, enhanced with artificial intelligence
- Predefined analysis profiles for many species
- Adjustable analysis parameters and customizable user profiles
- Comprehensive database with flexible reporting options
- Data export to MS Excel and other programs
- Languages: English, German, Spanish, Chinese, Portuguese, Russian, French
- Regular software updates and long-term expert support

AndroVision®, with PC and monitor 12500/0000

AndroVision®, with PC, touch screen, barcode scanner 12500/0001

AndroVision®, with laptop 12500/0010

## ☰ Optional software modules

Morphology and Morphometry 12500/1300

Measures length and width of the sperm head, head shape and midpiece asymmetry of each single sperm cell (acc. to Kruger). Results can be classified into a large range of morphological abnormalities. [1]

Dose Calculation 12500/1100

Automatic calculation of the number of doses that can be prepared from an ejaculate and of the volume of extender to add to the ejaculate.

Quality Control 12500/1200

Analysis of samples post thaw and in holding. Link to native ejaculate analysis.





Recommended for in-depth analysis

## AndroVision® with fluorescence equipment

Stands out by combining classic CASA analysis with advanced assays for sperm functionality. Acrosome integrity, viability, mitochondrial activity and DNA integrity are analyzed within seconds – making AndroVision® the perfect tool for **detailed and comprehensive semen evaluation**.

As part of laboratory quality control, these analyses not only allow continuous fertility screening of the animals, but also the early identification of premium and standard breeding animals.

### (☰ Advanced software modules

**Viability\*** 12500/1400

Automatic count of the percentage of spermatozoa with intact membranes. [1]

**Acrosome Integrity\*** 12500/1600

Assessment of fertility by evaluating acrosome status. An intact plasma and acrosomal membrane are essential for sperm to penetrate the egg.

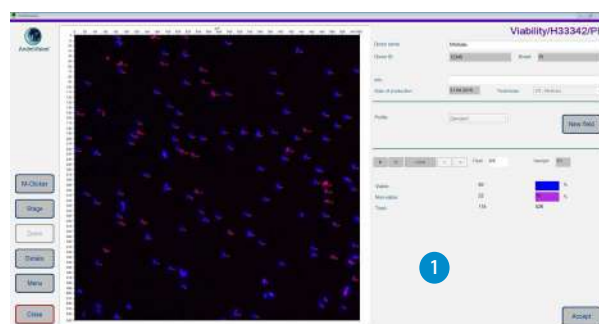
**Mitochondrial Activity\*** 12500/1700

Analysis of sperm energy processes for optimal motility. By analyzing mitochondrial activity, the energy metabolism of the sperm can be assessed.

**DNA Integrity\*** 12500/1800

Detection of DNA fragmentation as an indicator of sperm quality and fertility. The Halo technique differentiates between sperm with intact DNA and sperm with fragmented, defective DNA.

\* Requires fluorescence microscope.



### (↗ Accessories

AndroVision® high speed color camera [2] 12500/4400

Phase contrast microscope Zeiss AxioScope 5 with LED fluorescence\* [3] 12008/0015

ScanStage, automated microscope stage with integrated heating system [4] 12048/0031

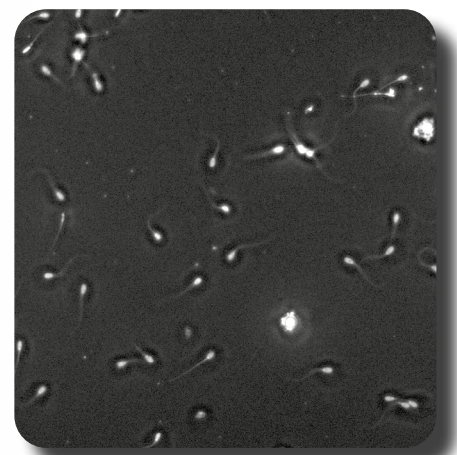
Controller HTi 200 [5] 12057/0200

Warming plate, 245 x 200 mm [6] 12057/0510

\* Other microscopes from our portfolio may also be used. Contact us for a personalized offer.



Recommended for semen production



+ High image quality

## AndroVision® with MiniQube

Combines the industry's leading CASA software with an **innovative digital microscope** to deliver a modern, precise, and reproducible solution for semen analysis across multiple species. AndroVision® MiniQube saves valuable time, eliminates subjectivity, and provides reliable results at the touch of a button.

### + Your benefits

- Rapid, reliable analysis: Process up to 30 ejaculates per hour
- Unmatched measurement reproducibility: Standardized results across users, labs, and production days
- Low-maintenance design: Ready-to-use with minimal setup
- All-in-one compact system: Replaces multiple devices with a streamlined design, small footprint, and reduced cabling

AndroVision® MiniQube, w/o PC and monitor 12500/5000

AndroVision® MiniQube, with PC and monitor [1] 12500/5001

MiniQube for existing AndroVision® systems 12500/5005

### + Accessories

Controller HTi 100 [2] 12057/0100

Warming plate, 245 x 200 mm [3] 12057/0510



### ★ Product features MiniQube

- Fully automatic autofocus: High image quality for every user and every analysis
- Heated and motorized stage: Stable, sperm-friendly temperature and fast, accurate sample positioning
- Unique, perfectly aligned optics (patent pending): Maintenance-free, no need for manual adjustments
- Digital light adjustment: Optimal clarity and contrast without manual intervention



+ Small footprint

## AndroScope

AndroScope is a compact mobile CASA system based on AndroVision®. It is designed for rapid, accurate semen analysis across multiple species at any stage of production, transport, or insemination.

### ★ Product features

- Equipped with a professional high-speed camera and a robust focus adjustment for precise evaluation of semen motility and concentration
- The heating unit in the analysis area reaches +37°C within a few seconds, providing optimal temperature conditions
- Analyze fresh, chilled, or frozen-thawed semen
- Follow the analysis live on the screen and generate PDF reports with key parameters clearly mapped
- Connect AndroScope to any Windows 10+ PC, laptop, or tablet via USB 3.0 for offline analysis using the installed software
- Alternatively, use the free AndroScope App (available for Android and iOS) on your smartphone for fully mobile CASA analysis
- Perform real-time analysis in the App and enjoy smooth live video streaming to your smartphone via the WiFi station
- The WiFi station creates a dedicated wireless network and can be powered by a wall outlet or portable power bank
- Intuitive interface requires minimal training while delivering reliable results
- Robust carry case provides optimal protection during transport and contains everything needed for semen analysis

AndroScope [1] incl. transport case and accessories 12500/3000

AndroScope Package: AndroScope, WiFi station, mobile warming unit, transport case and accessories 12500/3100

### 🔗 Accessories

Disposable counting chamber Minitube, 20 µm, 4 chambers, 25/box 12050/0220

Test tube 2 ml with cap, 250/bag 14602/0904

Disposable capillary tube, 100/bag 15404/0100

Micro fiber rod, length 124 mm, 100/bag 12510/0106

For mobile operation on smartphone: AndroScope WiFi station [2] 12500/3010

Recommended for sample preparation: Mobile warming unit, for 6 reaction vials and 1 slide [3] 12057/6000



### AndroScope App

Available for free on Google Play and App Store.



## Phase contrast microscope CX 43

- Phase achromat optics with universal condenser
- Heated microscope stage with temperature control unit HTi 200 and additional warming plate (180 x 180 mm)
- Integrated LED illumination
- Ergonomic design

Phase contrast microscope CX 43, with phototube (trinocular), objectives 20x, 40x **12005/0042**



## Phase contrast microscope MBL

Functional microscope for semen analysis with heating system and control unit for freely adjustable temperature.

### Phase contrast microscope MBL 2000

binocular, heated stage, HTi 50, objectives 10x, 40x, 100x **12010/3000**

binocular, heated stage, HTi 50, objectives 10x, 40x, 100x, with camera and monitor [1] **12010/3050**

### Phase contrast microscope MBL 2100

trinocular, heated stage, HTi 50, objective 20x **12010/3103**

trinocular, heated stage, HTi 200, objective 20x, with camera and monitor **12010/3101**

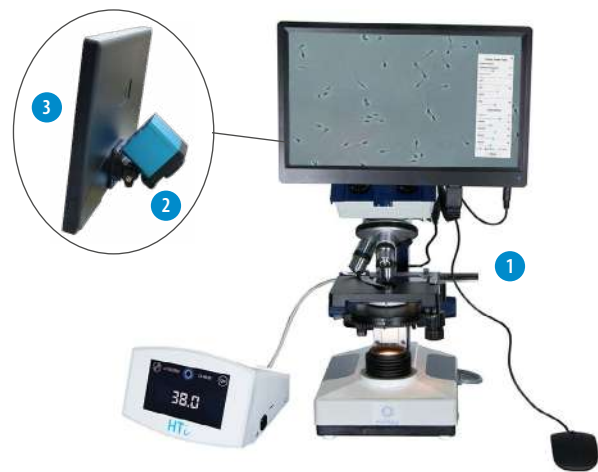
### Digital color camera for microscopes [2]

with integrated image display software **12110/1600**

### Monitor 11.6" with HDMI input [3]

**12110/1610**

Wide range of microscopes and accessories available



## Semen stains

Spermac, stain for morphology analysis, 4 x 50 ml [1] **15405/0000**

Fareilly stain, for morphology analysis, 3 x 250 ml [2] **15405/0026**

Eosin G, 2% solution for supravital staining, 50 ml [3] **15405/0025**

Nigrosin, 4% solution for supravital staining, 50 ml [4] **15405/0029**



## Counting chambers (hemocytometers)

Thoma new **15150/4771**

Neubauer improved **15152/4421**



## Microscopy supplies

Microscope slide, 75 x 25 mm, 50/box [1]	15400/2400
Cover glass, 18 x 18 mm, 100/box [2]	15401/0990
Immersion oil, 8 ml [3]	12000/0101
Lens cleaning tissue, 90 x 72 mm, 500/package [4]	15230/9100



## Photometer SDM 6

- Determination of sperm concentration and calculation of semen doses for boars, bulls, stallions, rams and bucks
- Automatic calculation of extender volume and number of doses
- Display of semen concentration in  $10^9$  sperm/ml
- Large touch screen for easy handling
- Serial interface for data transfer
- Integrated printer for printing ejaculate production data

Photometer SDM 6 [1]	12300/0006
----------------------	------------

### Accessories

Control cuvette set, 4 pieces	12300/0010
Paper for printer	12300/0311
Macrocuvette, 4 ml, 100/package, disposable	12301/0003
NaCl solution, 0.9 %, 1 l	12301/4667
Dispenser, 0.5-5 ml for NaCl solution	12428/1815
Bottle for dispenser, 500 ml	12428/1905
Adjustable single channel pipette, yellow, autoclavable, 10-100 $\mu$ l [2]	12425/4810
Pipette tip, 10-100 $\mu$ l, yellow, 1000/bag	12425/9409



### Proven accuracy

SMD 6 and SDM 1 are compact, highly precise photometers for measuring sperm concentration. Cleaning is simple, maintenance is minimal.

## Photometer SDM 1

- Calibrated for six different species, including porcine, bovine, equine, canine, caprine and ovine
- Raw semen samples can be used without dilution
- Semen concentration is displayed in  $10^6$  sperm/ml
- Electrical connection: with included mains adapter 100-240 V or batteries

Photometer SDM 1 [1]	12300/0200
Microcuvette for SDM 1, 100/box, disposable [2]	12300/1111



# 3 SEMEN DILUTION



## Water bath

Stainless steel, with angular lid and electronic temperature control.

- Working temperature range: minimum 5°C above ambient up to +100°C (depending on ambient pressure)
- Intuitive 3.5" color graphic display with touch screen
- Independent temperature limiter to switch off the heating in case of failure

Water bath, 23 l, 230 V/50-60 Hz

14079/0021



Different sizes of water baths available



## Electronic precision scale

- Weighing range: 2000 g
- Resolution: 0.1 g
- Weighing pan: 130 x 130 mm

Electronic precision scale up to 2 kg

14295/0442



## AndroMed®

- Perfect biosecurity: no ingredients of animal origin
- Constant, optimal freezing results, and high fertility rates with every dilution ratio
- Increased efficiency of microscopic analysis: extremely clear cell images
- Reduced preparation time

AndroMed®\* 13503/0200  
200 ml, for a total of 1000 ml of extender

AndroMed® CSS, One-step\*\* 13503/1200  
200 ml, for a total of 1000 ml of extender

AndroMed® CSS, Two-step\*\*  
Fraction 1, 100 ml, for a total of 500 ml of extender 13503/1250  
Fraction 2, 200 ml, for a total of 500 ml of extender 13503/1251



Egg-free media for semen freezing

## BoviFree

- Constant, optimal freezing results with all equilibration protocols
- Enhanced post-thaw semen parameters
- Brilliant microscopic images due to low viscosity and homogenous particle-free consistence
- Very easy to prepare

BoviFree\* 13501/0200  
200 ml, for a total of 1000 ml of extender

BoviFree CSS, One-step\*\* 13501/1200  
200 ml, for a total of 1000 ml of extender

BoviFree CSS, Two-step\*\*  
Fraction 1, 100 ml, for a total of 500 ml of extender 13501/1250  
Fraction 2, 200 ml, for a total of 500 ml of extender 13501/1251



Egg-free media for semen freezing

## Steridyl

- Elaborate, proven buffer formula
- Constant, optimal freezing results with every dilution ratio
- Easy to prepare, just add water and save time
- Sterilized, requires no addition of egg yolk

Steridyl\* 13500/0260  
500 ml, for a total of 1250 ml of extender

Steridyl CSS, One-step\*\* 13500/0280  
500 ml, for a total of 1000 ml of extender

Steridyl CSS, Two-step\*\*  
Fraction 1, 500 ml, for a total of 1000 ml of extender 13500/0290  
Fraction 2, 500 ml, for a total of 1000 ml of extender 13500/0295



Media for semen freezing with egg yolk

## Triladyl®

- Internationally established for over 50 years
- Elaborate formula, based on TRIS
- Ready to use after the addition of water and egg yolk
- Reliably optimal and constant post-thaw results

**Triladyl®\*** 13500/0250  
250 g, for a total of 1250 g of extender

**Triladyl® CSS, One-step\*\*** 13500/1200  
200 g, for a total of 1000 g of extender



Media for semen freezing (One-step)

## Biladyl®

- Based on the proven Triladyl® formula
- Allows first dilution without glycerol
- Used with various freezing protocols

**Biladyl®, Fraction A\*\*** 13500/0004  
49 g, for a total of 500 g of extender

**Biladyl®, Fraction B\*\*** 13500/0006  
250 g, for a total of 750 g of extender



Media for semen freezing (Two-step)

## OviPlus

Fresh semen extender concentrate for small ruminant semen, requires the addition of fresh egg yolk.

**OviPlus** 13610/0025  
24 ml, for a total of 200 ml of extender



## Antibiotic supplement

Antibiotic formula in powder, requires the addition of water.

**Antibiotic supplement for One-step extender:** 13504/9000  
550 mg Gentamicin, 110 mg Tylosin, 330 mg Lincomycin, 660 mg Spectinomycin

**Antibiotic supplement for Two-step extender:** 13500/0005  
300 mg Gentamicin, 60 mg Tylosin, 180 mg Lincomycin, 360 mg Spectinomycin



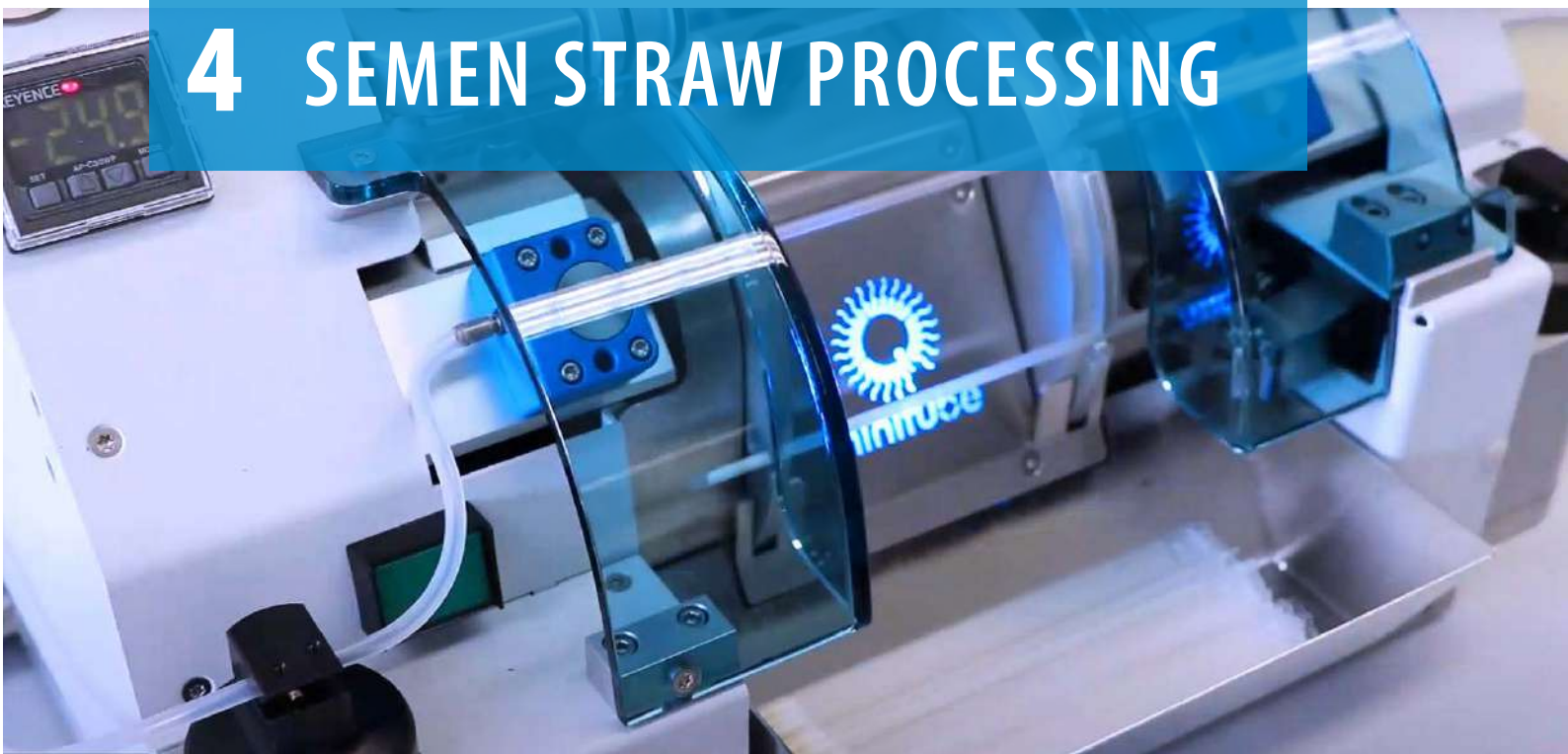
\* With antibiotic formula.

\*\* Corresponds with the CSS regulations for bull semen.

## Maximum product security

Made at Minitube's ISO and GMP-certified extender production facility. Highest quality control standards at each production stage and guaranteed use of semen friendly components and materials only.

# 4 SEMEN STRAW PROCESSING



## ■ Semen straws

For over 30 years, Minitube straws have been used worldwide as a standard for the freezing of semen. Minitube's quality control process, production techniques, and material selection ensure for a **reliable product** that consistently exceeds industry standards.



## ■ Fresh semen straws and EcoStraws

**Fresh semen straws** are designed to process and store fresh/chilled semen at refrigerated temperatures. The wick has a special powder which does not swell and absorbs less semen.

**EcoStraws** feature a wick with a shorter inner wick section that **absorbs 3 to 4% fewer sperm** than the corresponding symmetrical wick of standard semen straws.

## + Your benefits

- + Yield a larger number of semen straws per ejaculate because fewer sperm are lost in the wick
- + Better use of valuable genetics without adding additional cost
- + EcoStraws are ideal for overnight equilibration



## Fresh semen straws and EcoStraws

These are used in the same way as standard semen straws. Identical processes for:  
filling / sealing / printing / insemination

## Minitube semen straws

### Semen straw processing

	MiniStraw 0.25 ml	EcoStraw 0.25 ml	Fresh semen straw 0.25 ml	Medium straw 0.5 ml	EcoStraw 0.5 ml
transparent	13407/0010	13407/3010	13407/2010	13408/0010	13408/3010
transparent - blue-white wick	13407/0011	---	---	---	---
transparent - red-white wick	---	---	13407/2212	---	---
red - transparent	13407/0044	13407/3044	13407/2044	13408/0044	13408/3044
green - transparent	13407/0054	13407/3054	13407/2054	13408/0054	13408/3054
blue - transparent	13407/0064	13407/3064	13407/2064	13408/0064	13408/3064
grey	13407/0070	---	---	---	---
grey - transparent	13407/0074	13407/3074	---	13408/0074	13408/3074
purple - transparent	13407/0084	13407/3084	---	---	---
yellow	13407/0090	13407/3090	---	---	---
yellow - transparent	13407/0094	13407/3094	13407/2094	13408/0094	13408/3094
pink	13407/0100	13407/3100	---	13408/0100	13408/3100
turquoise	13407/0130	13407/3130	---	13408/0130	13408/3130
orange	13407/0140	13407/3140	---	---	---
orange - transparent	13407/0144	13407/3144	13407/2144	13408/0144	13408/3144
salmon	13407/0160	13407/3160	---	---	---
beige	13407/0180	13407/3180	---	---	---
beige - transparent	---	---	---	---	13408/3184
pistachio green	---	13407/3200	---	---	---
pistachio green - transparent	13407/0204	13407/3204	---	13408/0204	13408/3204
white	---	---	---	13408/0210	13408/3210

## EasyCoder

Clean and odorless printing of straws without ink and solvent.



### (★ Product features

- Thermal transfer printer with automatic straw supply (output: up to 3600 straws per hour) for immediately abrasion-resistant print
- Unparalleled precise and clear printing on 0.5 and 0.25 ml straws; easy and quick conversion between different straw sizes
- Prints up to 3 lines per straw, including barcodes, logos, and special characters
- Control via PC by a clear and user-friendly Minitube software
- Easy handling, little maintenance required
- Dimensions (L x W x H): 660 x 370 x 310 mm (PC not included)
- Power supply: 110 V/50-60 Hz or 230 V/50-60 Hz

EasyCoder printer 13038/0000

Thermal transfer ribbon, black 13038/0010



## MultiCoder

Quick and easy machine-readable labeling of lab items.

### (★ Product features

- High resolution inkjet printing
- Print head protection system (avoids drying out of ink)
- Wide variety of product carriers
- No tools needed for change of product carriers
- Pre-designed print layouts
- Loads excel files for printing
- Easy drag & drop editing of print layouts

### (+ Your benefits

- + Very versatile: print system can label most kinds of materials such as plastics, glass, or aluminum
- + Manually moveable slide and a unique, easy-to-use carrier system allow for a speedy work process
- + Easy printing of information on the smallest amount of space, including text, barcode, QR-Code, and logo

MultiCoder printer 13145/0000



### + Unique, flexible, versatile

Quick and easy print on a whole range of items: semen straws, goblets, cassettes, culture dishes, macrotubes, syringes, cryovials and many more.



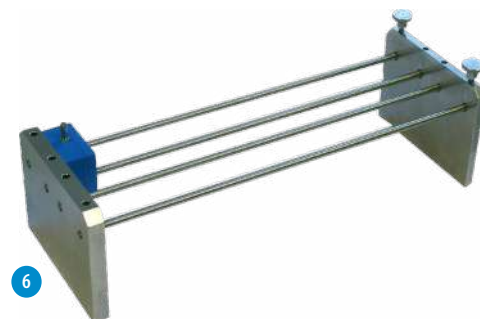
## MPP Uno

Seals and fills 1 straw per cycle – ideal for handling small volumes.



### ★ Product features

- Automatic filling and sealing machine for 0.25 and 0.5 ml straws
- Capacity: approx. 4000 straws/hour
- Fast, tool-free conversion between 0.25 and 0.5 ml straws and vice versa (1-2 minutes)
- Exchangeable hopper, capacity: 2400 MiniStraws (0.25 ml) or 1200 medium straws (0.5 ml)
- Ultrasonic sealing unit, ultrasonic generator in an external casing that can be installed at up to 2.5 m (ON/OFF switch directly on the machine)
- Designed to provide ideal conditions for hygiene and safety
- Can be operated in cold room or cabinet or at room temperature as stand-alone or combined with MiniJet printer (CombiSystem)
- Very compact device which takes up little space; machine dimensions: 460 x 350 x 410 mm (W x H x D) plus ultrasonic generator
- Vacuum unit with integrated reservoir and automatic readjustment function; vacuum level can be easily modified via buttons
- PLC microprocessor control
- Power supply: 110 V/60 Hz or 230 V/50-60 Hz



MPP Uno, complete [1] **13017/0000**

### ↔ Accessories

Filling nozzle, for 0.5 ml straws [2] **13017/0017**

Suction nozzle, for 0.5 ml straws [3] **13017/0027**

Straw hopper, for 0.25 and 0.5 ml straws [4] **13018/0006**

Washer, for 0.25 ml and 0.5 ml nozzles, 5000/bag **13021/3001**

Filling and suction tubing, 380 mm, sperm-friendly material (silicone), angle cut edge, 100/aluminum foil bag **13021/3800**

Disposable semen cone, 100/bag [5] **13018/0100**

Fixing unit, for filling and suction blocks, stackable, stainless steel [6] **13017/0050**

## SFS 133

### ★ Product features

- Semiautomatic filling and sealing machine
- Straws are filled and sealed 6 by 6
- Sealing is done securely and hygienically with metal sealing balls
- An air bubble of 1 cm is automatically produced in each straw
- Capacity: approx. 2000 straws/hour

SFS 133, for 0.5 ml straws, with vacuum bottle, filling and suction head, straw magazine [1] **13133/0133**

Low density vacuum pump, 30–60 Hg, with manometer and valve [2]

230 V/50 Hz **13133/0267**

115 V/50 Hz **13133/0268**

Cartridge loading device, with loading block and 10 cartridges for 36 straws 0.5 ml [3] **13133/0005**

### 🔗 Accessories

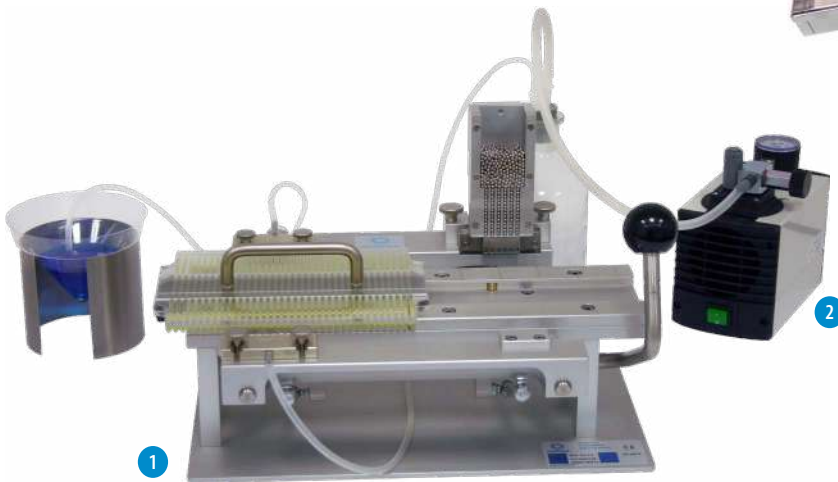
Filling head with 6 nozzles **13133/1000**

Suction head with 6 nozzles **13133/2000**

Washer, for all filling and suction nozzles, 5000/bag **13021/3001**

Silicone tubing for SFS, transparent, 3 x 1 mm, length 10 m **13133/3550**

Metal sealing ball for 0.5 ml straws **13400/9900**



# 5 SEMEN FREEZING AND CRYOSTORAGE



## Freezing units

Minitube freezing units are compact and easy to handle. They are made of a high-quality Styrofoam box, an inner container of stainless steel and a floating rack. The stainless steel container is filled with liquid nitrogen. The rack keeps the needed distance between 0.5 ml or 0.25 ml straws during the first down phase, while it floats on liquid nitrogen. After that, the straws get manually immersed into the nitrogen.

- Distance between straws and liquid nitrogen level can be adjusted
- Fits 0.5 ml and 0.25 ml straws
- Low nitrogen consumption
- High quality Styrofoam chest and stainless steel inner box
- Easy transport

### Freezing unit

for 20 straws [1]	15043/0636
for 90 straws [2]	15043/0736

### Accessories

Loading block for 90 straws floating rack	15043/0738
---	------------

### Additional rack

for freezing unit for 20 straws [3]	5015043/0600
for freezing unit for 90 straws [4]	5015043/0900



## Automatic freezer IceCube 14S

Computer controlled freezer, with comfortable data input and automatic recording of the freezing curve.

Larger alternative:  
IceCube 14M



### ★ Product features

- Temperature range: +40 to -180°C
- Freezing rates: 0.01 to 60°C/min
- Heating rates: 0.01 to 15°C/min
- Display accuracy: 0.01°C
- Temperature measurement via 2 Pt-100 resistance thermometers
- Capacity: max. 1080 x 0.25 ml or 0.5 ml straws per freezing cycle
- Software for freeze programming and control: unlimited storage of programs and processed files, color graphic display of all temperature curves, wide possibility of parameter settings
- Dimensions: 540 x 420 x 520 mm (L x W x H), weight: 29 kg

IceCube 14S, with connector kit for LN<sub>2</sub> pressure container

with 10" tablet [1]	16821/3000
with 12" touch screen monitor*	16821/2000
without screen*	16821/1000

### 🔗 Accessories

Rack for IceCube 14S, for 36 straws [2]	16821/5036
Loading device for straw rack	16821/5037
Handling rack for IceCube 14S [3]	16821/5030
Spacer for IceCube 14S [4]	16821/5018
LN <sub>2</sub> pressure container, 60 l	16820/1900
Roller base for LN <sub>2</sub> pressure container	16501/0204
Pliers for racks [5]	16821/5031
Cryoprotective glove, length 38 cm [6]	
size L (10)	23830/0521
size XL (11)	23830/0522
Kit for cryoprotection "Bluebox", case containing one pair of cryoprotective gloves size L (10), a cryoprotective apron and safety goggles [7]	23830/0523

### Embryo freezing with the IceCube:

Autoseeding preparation for freezing embryos	16821/5019
Autoseeding rack (spacer included) [8]	
capacity: 35 x 0.5 ml straws	16821/5020
capacity: 43 x 0.25 ml straws	16821/5021

\* To connect to own PC or laptop.



Semen freezing and  
cryostorage

## Cryostorage container

- With 6 canisters 279 x 41 mm
- Normal working duration: 175 days
- Neck opening: 55 mm
- Overall height: 690 mm
- Capacity: 3732 x 0.5 ml straws
- Full weight: 42 kg

MVE Cryo container ET 35, volume: 36 l **16503/3606**



Further cryostorage container options



## Vapor Shipper

- 1 canister 278 x 67 mm
- Static holding time: 19 days
- Static evaporation rate: 0.23 l/day
- Capacity: 938 x 0.25 ml/440 x 0.5 ml straws (1 level bulk)
- Neck opening: 70 mm
- Height: 500 mm
- Diameter: 220 mm

MVE Vapor Shipper SC 4/2 V, volume: 4.1 l [1] **16504/2001**

- 1 canister 278 x 46 mm
- Static holding time: 26 days
- Static evaporation rate: 0.19 l/day
- Capacity: 452 x 0.25 ml or 210 x 0.5 ml straws
- Neck opening: 50 mm
- Height: 500 mm
- Diameter: 220 mm

MVE Vapor Shipper SC 4/3 V, volume: 4.5 l [2] **16504/3001**

Protective shipping container, for Vapor Shipper, made of plastic, IATA compliant [3] **16504/3010**



## CryoCube™ Dry Shipper

- One-way shipper
- 1 canister 127 x 35 mm
- Static holding time: 5 days
- Capacity: 182 x 0.25 or 88 x 0.5 ml straws
- Neck opening: 35 mm
- Height: 305 mm
- Diameter: 305 mm

CryoCube™ Dry Shipper **16505/0100**



## Goblets

### Goblets [1]

Ø 7.1 mm	white	16907/0071
Ø 10 mm	white*	16910/0010
Ø 13 mm	white*	16913/0133
Ø 13.5 mm	green	16914/0135
Ø 35 mm	white	16935/0135
Ø 53 mm	white	16953/0133
Ø 65 mm	white	16965/0133
hexagonal	white	16970/0136

\* Available in different colors.

### Accessories

#### Goblet canes [2]

for 2 x 7.1 mm goblets	16965/6171
for 2 x 10 mm goblets	16965/6000
for 2 x 13 mm or 2 x 13.5 mm goblets	16965/6013

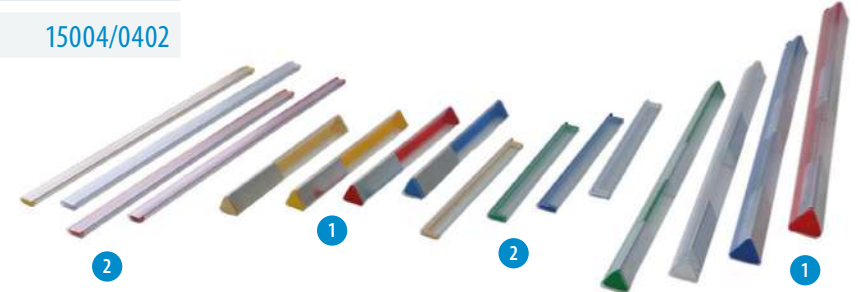
Marking label for goblet canes, different colors 13422/00xx

Divider for goblets, 100/bag, 12 x 6.5 cm [3] 16967/0065

#### Identification rod, 140 mm length

for 0.25 ml straw	16903/0210
for 0.5 ml straw	16903/1210

Stainless steel funnel for 65 mm goblets [4] 15004/0402



Semen freezing and cryostorage

## Cassettes for straw storage

	Triangular cassette [1]*		Flat cassette [2]**	
	long	short	long	short
green	16981/01351	16981/01201	16980/1201	16980/0601
blue	16981/01361	16981/01211	16980/1202	16980/0602
yellow	16981/01371	16981/01221	16980/1203	16980/0603
red	16981/01381	16981/01231	16980/1204	16980/0604
white	16981/01391	16981/01241	16980/1205	16980/0605
beige	16981/01401	16981/01251	16980/1206	16980/0606
orange	-	-	16980/1207	16980/0607

\* For 10/20 straws 0.5 ml or 28/56 straws 0.25 ml.

\*\* For 3/6 straws 0.5 ml or 6/12 straws 0.25 ml.

# 7 INSEMINATION AND DIAGNOSTICS



## Insemination kit for small ruminants

Rugged plastic case contains:

- 1 MiniThaw thawing unit (Ref. 17048/0001), page 24
- 1 QuickLock AI gun for small ruminants (Ref. 17350/0000), page 23
- 50 Universal sheaths for all types of straws for small ruminants (Ref. 17350/0010), page 23
- 100 shoulder length AI gloves (Ref. 17080/0010), page 25
- 1 ReproJelly lubricant, 100 ml (Ref. 11907/0100), page 25
- 1 vaginal speculum for small ruminants (Ref. 17373/0000) with 50 exchangeable transparent plastic tubes (Ref. 17373/0001), page 26
- 1 MiniCutter (Ref. 17062/0010), page 25
- 1 thermometer (Ref. 17049/0000), page 24
- 1 pair of tweezers (Ref. 17060/0000)
- 1 canister clamp (Ref. 17063/0000)

Insemination kit for small ruminants

17350/0110



Components also available individually.

## Insemination pipette for camels

Long pipette for deep intrauterine insemination. Smooth round tip for gentle introduction. Flexible shaft facilitates handling. Suitable for liquid and frozen-thawed semen in straws.

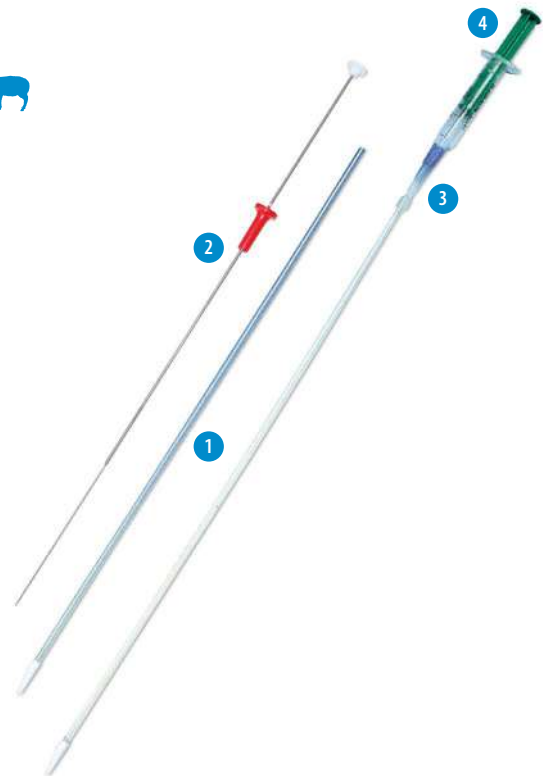
<b>Insemination pipette for camels, 1/bag, sterilized [1]</b>	
length: 65 cm	17209/1265
length: 75 cm	17209/1275
<b>Flexible stylet, used with insemination pipette and 0.5 ml straws [2]</b>	
for 65 cm pipettes	17209/1065
for 75 cm pipettes	17209/1075



## Insemination pipette for small ruminants

Insemination pipette with eccentric tip, can be used with 0.25 ml and 0.5 ml straws, Minitubes and syringe with adapter, for intracervical AI under visual control (speculum).

<b>Insemination pipette for small ruminants, 50/bag [1]</b>	17300/0000
<b>For frozen semen in straws - use pipette with:</b>	
<b>Inseminator for small ruminants, for 0.25/0.5 ml straws and Minitubes [2]</b>	17320/0000
<b>For semen in syringe - use pipette with:</b>	
<b>Adapter for liquid semen pipette, with tubing [3]</b>	17500/1000
<b>Disposable syringe, Luer mount, sterilized, all plastic, non-spermicidal, 100/package [4]</b>	19801/0005



## QuickLock AI gun and sheaths

QuickLock AI gun for small ruminants, to be used with Universal sheaths. Suitable for all kinds of straws (0.25 ml, 0.5 ml and Minitubes). For intravaginal AI without speculum. Very handy lock system for sheaths. Secure emptying of straws without backflow.

<b>QuickLock AI gun for small ruminants [1]</b>	
white finger support of stylet	17350/0000
red finger support of stylet	17350/0003
blue finger support of stylet	17350/0005
yellow finger support of stylet	17350/0008
<b>Universal AI sheath for QuickLock AI gun, round smooth tip, very easy to use, 50/package [2]</b>	17350/0010



## QuickLock Heater 4.0

- AI and ET devices are transported at a constant temperature
- Keeps semen/embryo at optimal temperature from thawing to insemination/transfer
- Target temperature inside the bag is freely adjustable
- Power bank as source of electricity for more flexibility and reliability
- Very robust and easy to clean bag material
- Strap allows different ways of carrying the bag

QuickLock Heater 4.0	17028/0400
QuickLock Heater 4.0 with power bank	17028/0401

### Accessories

Power bank, for mobile use, provides power for up to 15 hour	17028/0410
USB car adapter to connect to on-board 12-24 V socket	17048/0420
USB mains converter to connect to mains 110-230 V socket	17048/0430
Inner bag for QuickLock Heater, 100/package	17028/0201



## MiniThaw thawing unit

- Variable temperature setting (ambient to +50°C)
- Digital display of current temperature
- Straw lift has three compartments and allows thawing of up to 10 straws at a time (0.5 ml or 0.25 ml)
- Connects to on-board 12-24 V socket and to mains 110-230 V socket via USB-C cable or adapter
- Robust and easy to handle

MiniThaw with USB-C cable [1]	17048/0001
-------------------------------	------------

### Accessories

USB car adapter to connect to on-board 12-24 V socket	17048/0420
USB mains converter to connect to mains 110-230 V socket	17048/0430
Base for MiniThaw, metal [2]	17048/0005
Digital timer, magnetic, battery included [3]	17048/0006
Power bank, for mobile use, provides power for up to 15 hours [4]	17048/0410
Thermometer for thawing unit, measures up to +50°C, length: 14 cm, comes with cover [5]	17049/0000



## MiniCutter

- Precise cutting of 0.25 and 0.5 ml straws
- Facilitates straight cut at exactly the right length, which helps to avoid semen loss
- Ergonomic shape, easy to keep clean

MiniCutter for straws

17062/0010



## AI/exploratory gloves

Recyclable polyethylene gloves that are both flexible and strong, giving you excellent feel combined with good protection. The reduced diameter of the glove will help to keep it on your arm without compromising its robustness.

AI/exploratory gloves, 5 finger, shoulder length

sensitive, blue, 100/box

17080/0010

sensitive, blue, single packed, sterilized, 50/box

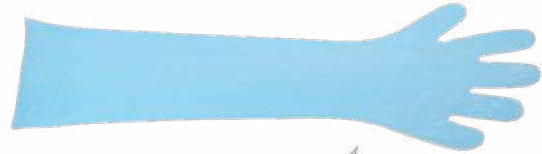
17080/0250

super-sensitive, transparent, 100/box

17080/0050

super-sensitive, transparent, single packed, sterilized, 50/box

17080/0052



## Lubricant ReprJelly

- Iso-osmotic, water soluble and sperm-friendly
- Batches are tested for sperm compatibility
- Ideal viscosity to better coat gloves, AI equipment and instruments

100 ml tube, resealable [1]

11907/0100

1 l bottle, resealable [2]

11907/1000

3 l canister, resealable, without dispenser [3]

11907/3000

Dispenser for canister, reusable

11907/3100



### ReprJelly lubricant

Iso-osmotic and sperm friendly, supports the sperm cell viability. Ideal viscosity for optimal coating of gloves, AI equipment, and instruments.

## Vaginal specula for small ruminants

**Vaginal speculum**, battery handle with incorporated lamp, length: 240 mm, diameter: 17.3 mm [1] **17373/0000**

**Disposable transparent plastic tube**, for speculum 17373/0000, smooth front edge, length: 190 mm, diameter: 17.3 mm, 50/package [2] **17373/0001**

**Vaginal speculum**, duckbill type, length: 200 mm, stainless steel [3] **17370/3772**



## Vaginal speculum for camelids

**Disposable speculum**, made of cardboard with reflecting aluminum coating, smooth front edge for gentle introduction, length: 43 cm, diameter: 3 cm, 100/box **17210/0000**

### Accessory for all specula

**LED-light**, battery operated (up to 250 h), with clip for fixing, length: 96 mm **17210/0010**



## Cradle for laparoscopic AI in sheep

The cradle is used for several applications in sheep, goat, and deer when a secure fixation of the animal is required, e.g., laparoscopic insemination, surgical interventions, semen collection with electro ejaculation. The adjustable bed accommodates a wide range of animals, and the comfortable working height of 57 cm allows veterinarians to work ergonomically, improving accuracy and reducing fatigue during lengthy procedures.

- Hydraulic lifter assists allow smooth, controlled height and angle adjustments
- Rear swivel wheels with brakes ensure easy movement and stable positioning
- Zinc-plated steel construction provides a hygienic, corrosion-resistant, easy-to-clean surface
- Dimensions: 152-175 x 45 x 57 cm (L x W x H)
- Weight: 45 kg

**Cradle for laparoscopic AI** **23700/3000**



## PBS Blue

Semen marker solution for laparoscopic insemination in sheep and thaw medium for sheep semen pellets.

**PBS Blue**, 20 ml flask with rubber septum closure **21500/0001**



## Laparoscopic AI in small ruminants

### Laparoscopic AI equipment:

<b>Laparoscope, Ø 5 mm, working length 300 mm</b>	
0° [1]	23700/3050
30° [2]	23700/3053
<b>Multiport trocar system, Ø 5.5 mm, working length 105 mm</b>	
with cutting pyramidal tip [3]	23700/3055
with cutting conical tip [4]	23700/3056
with atraumatic blunt ball tip [5]	23700/3057
<b>Camera Z1 with controller, camera head, C-Mount adapter (f=25 mm) [6]</b>	23700/3300
<b>Camera Z2 with controller, camera head, C-Mount adapter (f=25 mm), and with two remote control buttons and USB flash drive for storing images</b>	23700/3301
<b>CO<sub>2</sub> insufflator with high-pressure CO<sub>2</sub> tubing, sterile filter and silicone tube, flow rate 20 l/min [7]</b>	23700/3100
<b>LED high-performance light source, 180 W [8]</b>	23700/3200
<b>Fibre optic light cable, Ø 3.5 mm, length 3000 mm [9]</b>	23700/3250



Insemination and diagnostics

### Lap AI Gun and Robertson pipette:

<b>Robertson pipette, non-sterile, 10/package, can be used with Lap AI gun or syringe [1]</b>	
for standard laparoscopic insemination	23700/2200
for laparoscopic insemination especially in stimulated donor ewes with thicker uterine wall (longer needle)	23700/2201
<b>Lap AI Gun, for use with Robertson pipettes and 0.25 ml straws [2]</b>	23700/2205
<b>Stylet, for removal of emptied 0.25 ml straw from Robertson pipette [3]</b>	23700/2206
<b>Inner catheter, for Lap AI Gun, 50/bag [4]</b>	23700/2207



### Benefits of Lap AI

Laparoscopic AI increases pregnancy rates by depositing semen directly into the uterus. It can be performed efficiently under sedation outside of a surgical room.

## ■ Ultrasound scanner Minitube 3.0 Plus

Portable ultrasound scanner for multi-species obstetrical measurements with accurate automatic calculation of gestation days.

- Includes 11" tablet, power supply, carrying strap, ReproJelly lubricant, and charger, all housed in a heavy-duty case
- Compatible with any Android device with USB-C port
- Supports multiple scanning modes, including B-mode, dual B-mode, M-mode, PW, and CF color Doppler with automatic parameter calculations
- Built-in battery provides extended operation (up to 6 hours) with fast charging (2-3 hours)
- Large, glare-free display ensures clear visualization of anatomical structures in all lighting conditions
- Compact, lightweight, and IPX7 waterproof



Ultrasound scanner Minitube 3.0 Plus [1]	23500/2005
Convex probe, 3.5 MHz, for transabdominal pregnancy detection in small ruminants [2]	23500/2105
Linear rectal probe, 6.0 MHz, for transrectal pregnancy detection in camels [3]	23500/2106



Other probes available.

## ■ Ultrasound scanner Minitube 3.0



Portable ultrasound scanner for pregnancy detection in small ruminants. Complete with 3.5 MHz convex probe with built-in freeze button. Large display for detailed visualization of the ultrasound image on an 8" tablet with charger in a robust case.



Ultrasound scanner Minitube 3.0	23500/2000
---------------------------------	------------

## ■ Pregnancy tester



For pregnancy detection in small ruminants after 65 days using ultrasonic waves. Complete with carry case, test body, wrist band, contact gel bottle and standard battery. Operates with rechargeable or standard battery. Very handy, robust and easy to use. Good freedom of movement due to the probe connected to a spiral cable.

Pregnancy tester	23350/2838
Charger for 100-240 V, with rechargeable battery	23350/2840



## ■ Cytology brush for camels

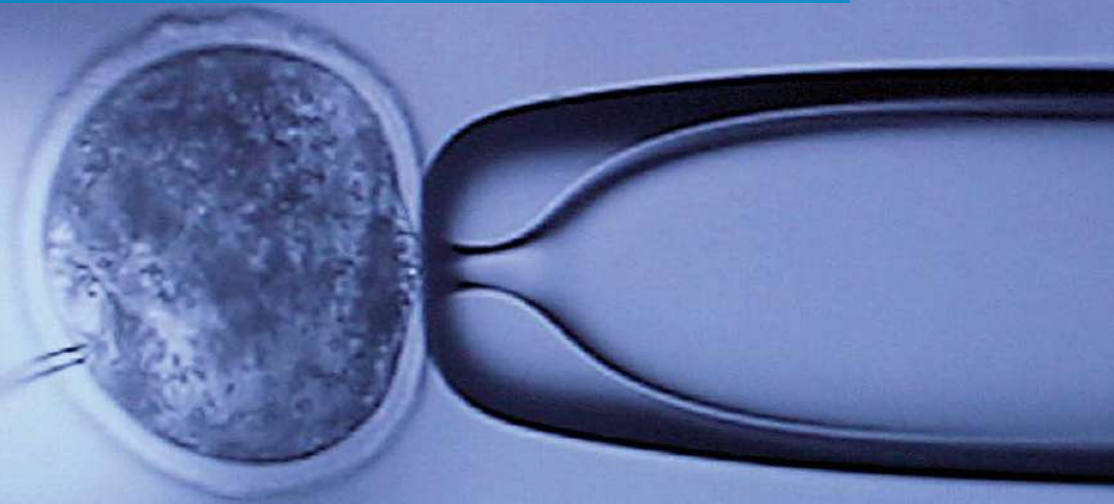


Disposable set for collecting endometrial cells for cytology. Single packed and single use, sterilized, with hygienic cover.

Cytology brush for camels	17075/0010
---------------------------	------------



# 7 EMBRYO TRANSFER



## Vitrification unit

Set for vitrifying embryos or oocytes in OPS (=open pulled straws) or conventional straws.

Unit consists of:

- Styrofoam box with stainless steel vitrification bath
- Material for vitrification: OPS, OPS container, sterile straws (0.25 ml), flat cassettes
- Manual with detailed description of media preparation

Vitrification unit

19500/2000



## Herrid's Vitrification Kit for camels

Contains all media to vitrify up to 30 camel embryos:

- Holding medium
- Vitrification medium VS1, VS2 and VS3
- Thawing solution WS1 and WS2

Herrid's Vitrification Kit

19982/6850



## Proven results

Herrid's Vitrification Kit delivers up to 90% embryo survival and ~50% pregnancy rates with ready-to-use, GMP-manufactured media specifically designed for day 6–8 camel embryos.



## Recovery media

Ready-to-use media for embryo recovery. Complete formulation containing buffers, BSA or PVA and antibiotics.

- Available in plastic bottles (fully recyclable) and infusion bags
- Infusion bags with 3-way port configuration and sealed ports for hygienic fluid removal [1] [3]
- Transparent bottles with screw cap for instant visual inspection and secure, simple handling [2] [4]
- GMP-certified production in a dedicated clean room with stringent production and quality control standards

BoviFlush	
with BSA, 1 l, bag [1]	19982/6001
with BSA, 1 l, bottle with screw cap [2]	19982/6004
with PVA, 1 l, bag [1]	19982/6011
with PVA, 1 l, bottle with screw cap [2]	19982/6010
CamelFlush	
with BSA, 1 l, bag [3]	19982/6601
with BSA, 1 l, bottle with screw cap [4]	19982/6702
with PVA, 1 l, bag [3]	19982/6611
with PVA, 1 l, bottle with screw cap [4]	19982/6802



## Holding medium

The solution contains glucose, pyruvate, BSA, amino acids, growth factors and antibiotics. BoviHold is used for:

- Holding embryos at room temperature in ambient conditions
- Transporting embryos
- Washing and rinsing embryos
- Loading embryos for transfer to recipient animal

BoviHold	
3 bottles of 10 ml each	19982/6047
20 ml	19982/6046



## Cryopreservation medium

Medium for conventional slow rate freezing of embryos. The cryopreservation solution contains a buffered solution with D-glucose, Sodium-pyruvate, BSA and antibiotics. With ethylene glycol for conventional freezing and direct transfer after thawing.

BoviFreeze, 3 bottles of 10 ml each	19982/6052
-------------------------------------	------------



## Embryo collection catheters for small ruminants

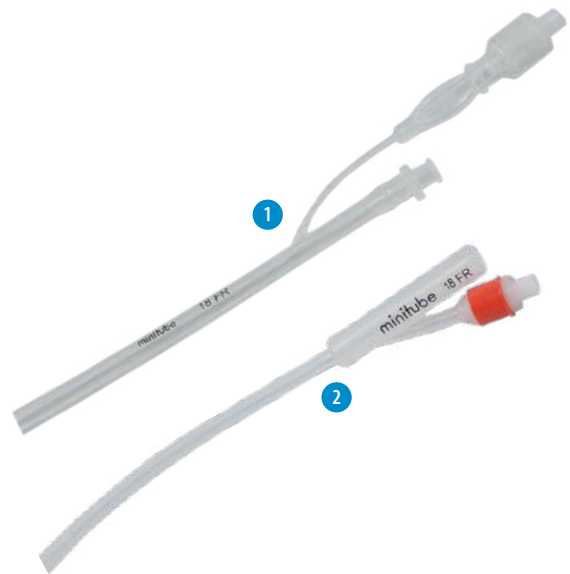
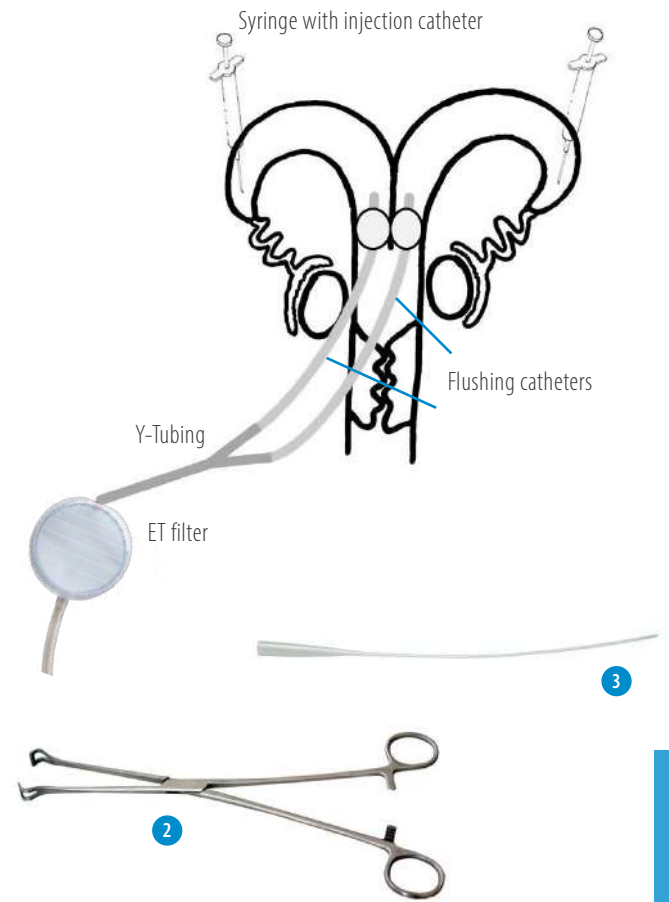
Embryo collection catheter CH 8, silicone, 3 ml balloon, length: 24cm, 2-way, Foley type [1]	19009/6008
Single connector tubing	19009/6001
Y-tubing	19009/6002
Injection catheter, for embryo flushing medium in surgical recovery	19810/0960
Babcock tissue forceps, for holding the uterine horn in surgical collection and transfer, 30 cm, stainless steel [2]	15010/6024
Tomcat catheter, disposable, 50/bag [3]	19001/0050



## Embryo collection catheters for camelids

Silicone catheters, 650 mm length (26"), 20-30 ml inflation cuff, high volume recovery ports, Luer activated valve, sterilized.

Silicone catheter 2-way, Luer Lock, 1/bag [1]	
CH 12	19005/0100
CH 16	19005/0102
CH 18	19005/0103
CH 20	19005/0104
Silicone catheter 2-way, Foley end, 1/bag [2]	
CH 12	19005/0220
CH 16	19005/0221
CH 18	19005/0222
CH 20	19005/0223
Mandrin for flushing catheter, CH 18/20	19007/0018



## Filters for embryo collection

- Secure fixation of the lid during collection and easy to open after collection (no screw cap)
- Integrated search dish engraved with a grid makes it easy to search and find embryos (ideal mesh size for all bovine embryo sizes)
- Filter mesh cannot dry out as it remains in contact with fluid
- Excess fluid is controlled and removed through outlet tubing with attached thumb clamp (entry hole is big enough to ensure the necessary flow speed of the flushing medium)
- Connection to all types of Y-tubing is possible
- Sterilized and absolutely tight

## EmSafe

- Maintains a constant 60 ml of flushing fluid in the dish
- Air vent in the lid and air outlet are provided with a filter which is holding embryos securely in the system

EmSafe filter **19010/6000**

## Miniflush®

- Vertical recovery system with large filter surface area
- Maintains a constant 20 ml volume during the entire flushing procedure
- Due to its shallow design, search dish is perfectly suited for use with all microscopes

Miniflush® filter **19222/2000**

## Flushing tubing

Equipped with white and blue clamps to better distinguish outlet/inlet during the flushing process. Tubing made of very smooth, flexible material. End for filter connection requires no extra adapter. Disposable, sterilized, 1/bag.

Y-tubing for embryo collection with the EmSafe filter

Luer end **19011/0100**

Foley end **19011/0200**

Y-tubing for embryo collection with the Miniflush® filter

Luer end **19011/0000**

Foley end **19011/0001**

## Easy and safe to use

All-in-one dual-purpose filters and search dishes that require no attention during flushing procedure. Embryos are recovered directly from the filter dish.



## Freeze Control® embryo freezer

Freeze Control® embryo freezing systems are designed for practitioners. They use liquid nitrogen as cooling medium, and heat control for regulating temperature.

- Each system consists of a cryobath, controller and a carry case
- Control range: +20°/-43°
- Capacity: 23 x 0.5 ml or 46 x 0.25 ml straws

Freeze Control® embryo freezer	
CL 2200, 8 preinstalled programs, 1.5 l cryobath, external power supply [1]	19406/2200
CL 5500, 16 preinstalled programs, 1.5 l cryobath, inbuilt battery power pack [2]	19406/5500
CL 8800, 16 preinstalled programs, 3.8 l cryobath, external power supply [3]	19406/8800
External power pack for CL 2200/CL 8800	19407/0000



## Stereo-zoom microscope

- Wide-field HWF10x/22 mm eyepieces (no eyecups) with 45° inclined tubes
- 1:6.7 plan achromatic zoom objective, 6.7x-45x magnification, 33–4.9 mm field of view
- Anti-fungus treated, anti-reflective coated optics
- Comes with opaque and white/black stage plates and two object clamps
- 3 W LED incident and transmitted illumination with rotating mirror, adjustable separately, internal power supply

Stereo-zoom microscope, trinocular	12014/2000
------------------------------------	------------



## 5-well dish with lid

Embryo culture dish, rounded well edges, mouse embryo batch tested. Produced from material free of Bisphenol A and designed to facilitate pH equilibration of culture media.

5-well dish with lid, sterilized, rounded well edges, MEA tested	19021/0001
--	------------



## Steripette

Steripette for embryo handling, 55 mm, individually packed, sterilized, for use with 1 ml syringe.

Steripette, 50/package	19025/0050
------------------------	------------



## Micropipettor

Micropipettor for handling of embryos, easy and precise pipetting by handling wheel, for all sizes of capillary tubes up to 1 ml.

Micropipettor 19022/0002



## Petri dish

Petri dish, plastic, for embryo handling

diameter 35 mm	19020/0035
diameter 94 mm	19020/0094
diameter 145 mm	19020/0145
with grid, diameter 65 mm	19020/2065



## MiniStraw, 0.25 ml

MiniStraw, 133 mm, sterilized, 10/package

transparent [1]	19042/0010
yellow (direct transfer) [2]	19042/1010
transparent with glass sealing ball	19041/0010

MiniStraw, 133 mm, sterilized, transparent, 10/package, with white ID rod seal (other colors available) [3]

MiniStraw, 90 mm, sterilized, transparent, with white ID rod seal (other colors available), 10/package

ET identification rod, for sealing of 0.25 ml straws, 100/package, white (other colors available) [4]

Pen for marking, very fine, alcohol permanent, black 19045/0100



Wide range of MiniStraws in different colors available



## CryoSealer

Manual sealer using ultrasound technology. Can be used for 0.25 and 0.5 ml straws. Ultrasound welding facilitates a perfect and uniform seal of each straw. Power supply: 100-240 V AC / 50-60 Hz.

CryoSealer 13135/0000



## Manual sealer

Manual sealer for straws, securely seals all kinds of straws by applying heat at the end of the straws (also in liquid nitrogen vapor). Consists of a plier welding head adapted for straws and a control unit for varying heat level.

Manual sealer 13135/2500



## Portable incubator

- Safe and temperature-stable transport and holding of oocytes, embryos and reproductive tissue
- Constant temperature distribution by using metal balls as a transfer medium in the device
- Highly precise temperature control (+/- 0.5°C)
- Easy and secure fixation of vials and straws
- Absolutely dry and hygienic environment
- Various accessories for flexible power supply options

Portable incubator with adjustable temperature 19180/0003  
(from ambient to +50°C) [1]

### Accessories

Power bank, for mobile use [2] 17048/0410

USB car adapter, to connect to on-board 12-24 V socket [3] 17048/0420

USB mains converter, to connect to mains 110-230 V socket [4] 17048/0430

Base for portable incubator, metal [5] 17048/0005



## Embryo transport kit

- Carrying case with portable incubator, rechargeable battery and battery charger
- For safe transport over long distances with an optimum environment
- Long lasting rechargeable battery up to 20 h
- Constant temperature by very accurate controlling systems
- Heavy-duty, lockable and shock proof carrying case ensures safe transport
- Outer dimensions: 584 x 267 x 289 mm (L x W x H)
- Weight of complete kit: 11.5 kg

Embryo transport kit with incubator and battery 19180/2102



## ■ Neopor transport box

For shipping embryos at 5°C. Made of highly insulating Neopor. Holds constant temperature for up to 45 hours. Includes 2 disposable syringes (5 ml, 10 ml), 2 plastic tubes (13 ml), 1 vial (50 ml), 2 cold packs.

Neopor transport box [1]	17229/0005
Transport vial with secure snap cap, round bottom, 5 ml, single packed, sterilized [2]	19180/5006



## ■ Transfit Lateral sheaths and ET Cannula

Sheath with a stainless steel tip and side openings. Used with 0.25 ml straws to transfer bovine embryos.

Transfit Lateral ET sheath [1]	
5/bag	19240/1005
single packed in hygiene cover, 25/Ziplock bag	19240/1007
ET Cannula to be used with Transfit Lateral sheath [2]	
Deep Chamber - for uncut straws	19240/1000
Shallow Chamber - for cut straws	19240/1001



## ■ Sanitary sheaths

Hygienic sheath, thin plastic sheath, roll with 80 units [1]	19271/0080
Sanisheath, rigid hygienic sheath with perforable cap, 25/package [2]	19270/0025



## ■ Laparoscopic equipment

Please refer to page 27 for laparoscopic equipment for small ruminants.

# 8 TRAINING AND SERVICE



## ■ Training and education

Minitube offers specialized product training and educational seminars in assisted reproduction technologies worldwide. Individual and open seminars providing instructions in artificial insemination, embryo transfer, semen analysis, semen processing and more are offered according to demand.

All training courses blend theoretical knowledge and practical experience. Our instructors are well-respected experts in assisted animal reproduction. Minitube cooperates closely with leading studs, universities, and research centers. The collective experience and knowledge are incorporated into our seminars where the latest technologies and practices are demonstrated and trained with the participants.

The courses are interactive workshops where presentations, discussions, demonstrations, and practical exercise go hand in hand. Minitube training sessions offer useful troubleshooting tips, and the trainees benefit from the “learning by doing” approach. Participants receive valuable documentation and a certificate of participation. Minitube training courses are very flexible and available at Minitube premises, at partner facilities, at the customer site and virtually.

We are happy to find the best training option for you.  
Please contact us: [seminar@minitube.de](mailto:seminar@minitube.de)

## ■ Mobile lab service

Minitube Middle East offers unique professional lab service to customers particularly in remote areas. The Mobile Lab is a van equipped with high-quality Minitube equipment to analyze and preserve/freeze animal semen or embryos.

Minitube Middle East offers the service to customers in the United Arab Emirates, Saudi Arabia, and Oman, in regions which otherwise have no access to a professional laboratory for semen and embryo preservation.

Please contact us for further information about the service and if you would like to discuss how to construct your own mobile laboratory: [minitube@minitube.de](mailto:minitube@minitube.de)





# MINITUBE INTERNATIONAL

## Servicing reproduction technologies worldwide

### Minitube USA

800.646.4882  
info@minitube.com

### Minitub do Brasil

+55 51 3222 7876  
minitub@minitube.com.br

### Minitube India

+91 11 4309 0668  
info@minitube-india.com

### Minitube China

+86 185 1545 5770  
info@minitube.cn

### Minitub Ibérica

+34 977 845 397  
info@minitub-iberica.com

### Minitube Australia

+61 3 5342 8688  
info@minitube.com.au

### Minitube Central Europe

+421 377 877 915  
mtce@minitube.sk

### Minitube Canada

800.500.7978  
info.canada@minitube.com

### Minitube México

+52 442 246 73 46/47  
info@mexitube.mx

### Minitube Middle East

+971 426 68871  
info.middle.east@minitube.com

### Minitube Indonesia

+62 21 7591 75-96/94  
info@minitube.co.id

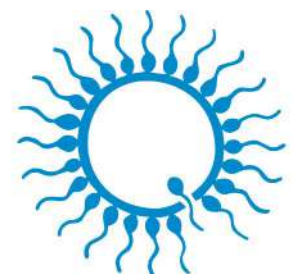
### Minitube International AG, Germany

+49 8709 9229 0  
minitube@minitube.de

*Follow us*



[www.minitube.com](http://www.minitube.com)



**minitube**  
our knowledge, your success