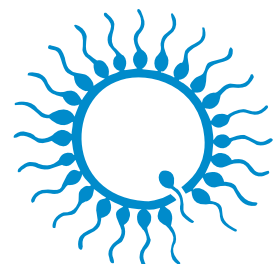




PORCINE

assisted reproduction technology



minitube
our knowledge, your success

Minitube: proven quality since 1970



Dear valued customers,

Minitube is totally committed to quality – this is at the core of everything that we do.

For our worldwide client base, we recognize that reliability, functionality and efficiency are key factors for running a stress-free and profitable production system. For over 50 years Minitube has delivered robust, high-performance, quality equipment and consumables to the assisted reproduction market.

As an industry leader, we accept the responsibility of providing products that do not compromise quality or safety. For this reason, all proprietary consumables and semen or embryo preservation media are manufactured in our own dedicated state-of-the-art facilities, supported by extensive in-house and external third-party QA testing you can trust. Minitube quality is not subjective but based on hard facts and decades of a successful track record.

Our total quality approach is underpinned by a long-term partnership strategy with our suppliers and customers. These long-standing relationships help build the trust and understanding required to ensure ongoing quality.

The same is true for our service team who are always striving to provide the best service within the industry. As a customer, the expert knowledge and know-how of Minitube staff is always available to you.

Moving forward we promise to continue researching and developing the best products and providing the best service, just as we have for more than 50 years.

Dr. Christian Simmet
CEO





Minitube online media library:
All catalogs digitally available
in different languages

CONTENT

1	Laboratory management	02
2	Semen collection	04
3	Semen evaluation	08
4	Semen dilution	12
5	Semen processing	20
6	Semen storage and transport	30
7	Insemination and diagnostics	32
8	Semen freezing	38

1 LABORATORY MANAGEMENT



Electronic boar identification with iMale

The wireless combination of iMale RFID reader and iMale label printer allows **safe reading of animal ear tags** and **direct printing of barcode labels** with the animal ID in the semen collection area. The printed barcode label can be stuck on the semen collection bag/cup and can then be used to securely identify and process ejaculates in the laboratory i.e., with Prism10.

Product features

- Available as an independent system or in addition to Prism10
- Operating distance: 30 cm, plus length of device: 65 cm
- Maximum distance for wireless data transfer from the iMale reader to the label printer is about 10 meters
- All HDX and FDX-B transponder ear tags can be read

iMale RFID reader, built-in quick-charger and external power unit included [1]

18001/0000

Accessories

iMale label printer [2]

18001/0200

Label for iMale printer, 41 x 25 mm, roll with 425 labels [3]

18001/0210



more information

Prism10 lab software

With its dynamic user interface, Prism10 lab software offers a modern process and product-based concept for controlling boar semen production.



more information

Product features

- Straightforward ejaculate processing: boar ID, ejaculate volume (scale), concentration (photometer or AndroVision®), motility and morphology (AndroVision® or manual), evaluation and collector identification and more
- Data connection to SmartDispenser 1.0 & 2.0, AutoDispense, HyPacker, MiniBSP, TwinPacker, QT-Packer, SPS-11, label printer, external programs
- Flexible architecture: operation from any connected computer and mobile devices
- Product-centered approach allows for customized mapping of production processes: every ejaculate can be processed into different products, for example with different number of sperm per dose, different packaging, dose volume, etc.
- Flexible tool to import and update donor information from MS Excel
- Flags for marking characteristics of ejaculates, collections, and boars (e.g., reason for discard, quality of jump)
- Adjustable limits and warnings for ejaculate data to help stud manager in decision-making during production
- Live data can be accessed remotely, e.g., orders filled, progress of daily production, discarded ejaculates, etc.
- Comprehensive reporting with customizable templates and export function (PDF, MS Excel)
- Donor animal dashboard with graphs: overview of average genetic index, rest time, age, weekly available sperm output, barn usage and others
- Production dashboard with graphs: overview of semen quality, produced doses per period, per breed, per process, and many more



+ Your benefits

- + Newly developed, modern, browser-based software
- + Guaranteed long-term support by experienced team of developers
- + Hassle-free connection to Minitube devices
- + Secure and traceable input of all data, entry errors are minimized
- + Data is accessible remotely by smartphone
- + High production reliability, operation is not dependent on a single device
- + The most important performance parameters at a glance
- + Great flexibility in serving different customers with various products
- + Seamless integration of production and sales
- + Statistical analysis of all production data

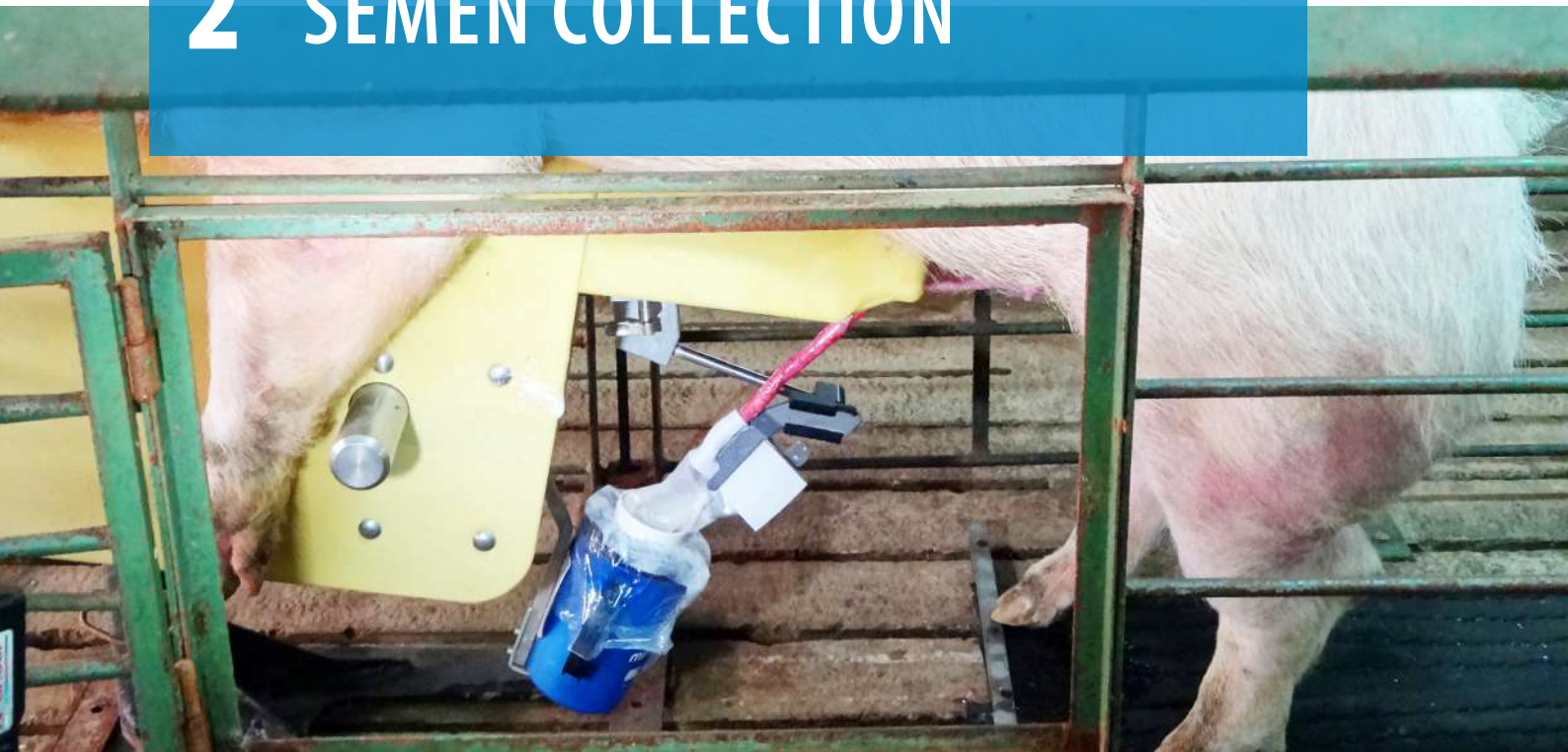
Laboratory management

Prism10 lab software subscription

12535/0010



2 SEMEN COLLECTION



Collection dummy

The Minitube boar dummy is height adjustable, and spring mounted, **easy to use** and offers an **optimal collection comfort** for the boar. The smooth and easy to clean surface of the firm plastic cover guarantees **maximum hygiene**. Cover and mounting part can easily be replaced. A BoarMatic upgrade is possible.

Collection dummy

11" for mature boars, plastic cover [1]	11100/0207
11" for mature boars, stainless steel body [2]	11100/0210
9" for younger boars, plastic cover [1]	11100/0107
9" for younger boars, stainless steel body [2]	11100/0108

Accessories

Replacement cover

for boar dummy 11"	5011100/0233
for boar dummy 9"	5011100/0133

Mounting part

for boar dummy 11"	11100/0204
for boar dummy 9"	11100/0203



BoarMatic

With the BoarMatic, Minitube has developed an efficient, improved technique of boar semen collection. The BoarMatic boar dummy is provided with an integrated mechanism for automatic semen collection.



more
information

Product features

- **Boar dummy**, height adjustable by pneumatic spring
- **Slide** underneath the dummy with a **holder** for the semen collection cup and a **clamp** for the artificial cervix (AC)
- **Single use AC**, a true copy of the porcine cervix in texture and surface
- Easily **exchangeable mounting part** that can be replaced within a few seconds, therefore ensuring maximum hygiene conditions during boar semen collection

BoarMatic	
11" for mature boars, plastic cover [1]	11100/0202
11" for mature boars, stainless steel body [2]	11100/0200
9" for younger boars, plastic cover [1]	11100/0201
9" for younger boars, stainless steel body [2]	11100/0199

Accessories

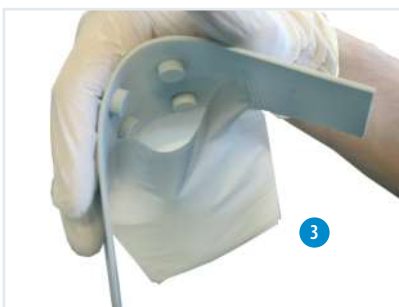
Artificial cervix (AC), single use, 50/bag [3]	11100/0211
Semen collection cup, for use with AC	11100/0215
BoarMatic clamp, holds artificial cervix (AC) [4]	
right side	11100/0205
left side	11100/0206
Height adjustable clamp holder	11100/0208
Rubber mat for boar dummy, 150 cm x 100 cm x thickness 23 mm	11100/0040
Mobile support for boar dummy	11100/0110

Your benefits

- + Suitable for all boars, easy to handle, adaptable to existing installations
- + Simple mechanics, no electric or pneumatic connections necessary, requires low maintenance
- + Extremely hygienic: closed system from the boar penis to the bag
- + Time saving: increased number of collections per hour
- + Can be operated from left or right side



Semen collection



ARTIFICIAL CERVIX (AC)

Rubber cushions stimulate the boar and assure a perfect hold for the tip of his penis. A tear-away inner pouch to collect the first sperm free jets of the ejaculate and a sheath leading the ejaculate into the semen collection cup are integrated in the AC.

US Bag®

Product features

- Semen-friendly material
- Integrated non-woven filter
- Perforation line for tearing off the filter after use

Your benefits

- + Complete one-way solution from semen collection to packaging
- + Easy removal of bulbourethral gland secretion
- + Quick and clean preparation of the semen collection cup: filter and inner surface of the US Bag® are kept contamination free
- + Simple and efficient semen processing: the ejaculate remains in the US Bag® for dilution and packaging
- + No more time-consuming sterilization
- + Essential improvement of lab hygiene
- + Clear foil allows an easy inspection of the raw ejaculate

US Bag®, 100/package

volume 3.5 l	11123/0100
volume 5.5 l	11123/0550
with spout, volume 3.5 l	11123/0200

Preparation of collection cup with US Bag®



PERFECT COMBINATION

With the US Bag® and BoarMatic, boar semen can be collected efficiently under optimal hygienic conditions.



more
information

Tearing off the filter after collection



StimuBoar

StimuBoar assists with the training of boars on a phantom. The spray is applied to the boar snout and directly to the dummy when training a young boar. The spray can also help to stimulate old boars to mount the dummy quicker.

StimuBoar, 35 ml, approx. 44 applications **17115/9005**



■ Warming cabinet

The warming cabinet is designed to **pre-warm semen collection material** in the collection area, i.e., collection bags, cups and ACs for the BoarMatic.

It has a **net volume of 156 liters** and is equipped with racks to optimize the storage of material.

Warming cabinet, +37°C, 230 V

11160/0150



■ Further products for semen collection

Semen collection cup, insulated, extra wide opening, volume 1 l

blue, recommended for use in collection area [1] 11123/1000

white, recommended for use in lab [2] 11123/2000

Semen collection glove, blue, nitrile, extra sensitive, sperm safe, latex-free, powder-free, 100/box [3]

size M 11128/0055

size L 11128/0060

size XL 11128/0065

Hygienic glove, for the protection of the collection glove, 100/package 11128/0100

Semen collection bag, 210 x 300 mm, volume 1 l 11123/3010

Filter for boar semen, non-woven tissue, non-absorbing, 240 mm diameter, 200/package [4] 11123/3020



1



2



3



4

3 SEMEN EVALUATION



AndroScope

AndroScope is a **compact mobile CASA system** that is based on AndroVision® and allows the operator to analyze semen motility and concentration of various species at any point in the production, transport, and insemination process.

AndroScope is equipped with a professional high-speed camera and a robust focus adjustment for precise semen analysis. The heating unit in the analysis area of the mobile CASA reaches +37°C within a few seconds, so that semen analysis is performed at optimal temperature conditions. AndroScope works with every PC, laptop, or tablet where MS Windows 10 or newer is installed (USB-3.0 plug is necessary to connect the device).

A practical, robust carry case provides optimal protection for the transport and contains everything you need to perform a semen analysis.

AndroScope [1] incl. transport case and accessories 12500/3000

Accessories

Disposable counting chamber Minitube, 20 µm, 4 chambers, 25/box 12050/0220

Test tube 2 ml with cap, 250/bag 14602/0904

Disposable capillary tube, 100/bag 15404/0100

Microfiber rod, length 124 mm, 100/bag 12510/0106

Option: Mobile warming unit, for 6 reaction vials and 1 slide [2] 12057/6000



more information

AndroVision®

This **highly precise automated system for computerized semen analysis** stands out for the integration of the classic CASA analysis with more advanced assays for sperm functionality. Concentration and motility as well as acrosome integrity, viability, mitochondria activity and DNA integrity can be assessed accurately and quickly with up to 1000 cells per field, making AndroVision® the perfect tool for the **objective and complete semen evaluation**.

AndroVision® can be seamlessly integrated with the Prism10 laboratory processing software. The user interface is straightforward and easy to understand: **only three clicks from start to analysis result**. An optional touch screen interface and barcode scanner enhances the system for even quicker and more efficient application.

AndroVision® software	
with PC and accessories [1]	12500/0000
with touch screen and barcode scanner	12500/0001
AndroVision® high speed color camera [2]	12500/4400



AndroVision® software modules

Module AutoMorph	12500/1000
Module Morphology and Morphometry	12500/1300
Module Viability*	12500/1400
Module Acrosome Integrity*	12500/1600
Module Mitochondrial Activity*	12500/1700
Module DNA Integrity*	12500/1800

* Requires fluorescence microscope.

Product features

- Real time analysis of live images and video files
- Analysis of up to 4 fields in 20 seconds
- Highly efficient particle filter for accurate sperm identification
- Analysis profiles for many species
- Adjustable analysis parameters and user created profiles
- Data export to MS Excel and other programs
- Languages: English, German, Spanish, Chinese, Portuguese, Russian, French

Accessories

Phase contrast microscope Zeiss Axiolab 5* [3]	12008/0020
ScanStage, automated microscope stage with integrated heating system [4]	12048/0031
Controller HTi 200 [5]	12057/0200
Warming plate, 245 x 200 mm [6]	12057/0510

* Other microscopes from our product portfolio can also be used with AndroVision®. Please contact us for an individual offer.



more information

Phase contrast microscope CX 43

- Phase achromat optics with universal condenser
- Heated microscope stage with temperature control unit HTi 200 and additional warming plate (180 x 180 mm)
- Integrated LED illumination
- Ergonomic design

Phase contrast microscope CX 43, with phototube (trinocular), objectives 20x, 40x **12005/0042**



Phase contrast microscope MBL

Functional microscope for semen analysis with heating system and temperature control unit for individual temperature adjustment.

Phase contrast microscope MBL 2000

binocular, heated stage, HTi 50, objectives 10x, 40x, 100x **12010/3000**

binocular, heated stage, HTi 50, objectives 10x, 40x, 100x, with camera and monitor [1] **12010/3050**

Phase contrast microscope MBL 2100

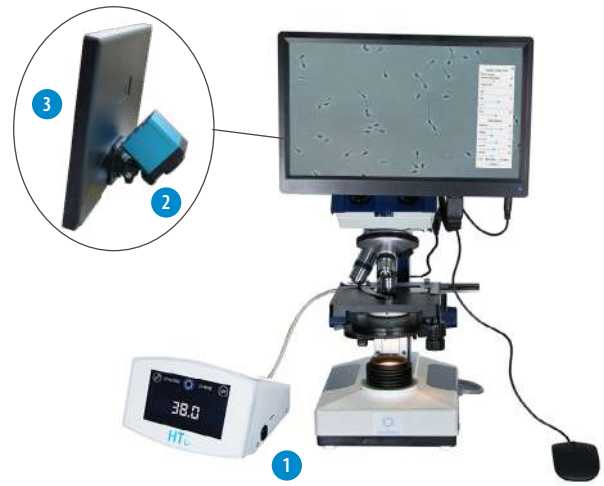
trinocular, heated stage, HTi 50, objective 20x **12010/3103**

trinocular, heated stage, HTi 200, objective 20x, with camera and monitor **12010/3101**

Digital color camera for microscopes [2]

with integrated image display software **12110/1600**

Monitor 11.6" with HDMI input [3] **12110/1610**



Semen stains

Spermac, stain for morphology analysis, 4 x 50 ml [1] **15405/0000**

Farely stain, for morphology analysis, 3 x 250 ml [2] **15405/0026**

SpermBlue, stain for morphology analysis, 250 ml **15405/0027**

Eosin G, 2% solution for supravital staining, 50 ml [3] **15405/0025**

Nigrosin, 4% solution for supravital staining, 50 ml [4] **15405/0029**



Nutating Mixer

For homogenization of samples in the quality control process, for up to 5 semen tubes or bags. Speed range: 20 rpm, maximum load: 0.8 kg, dimensions: 241 x 171 x 152 mm (W x D x H).

Nutating Mixer, 230 V/50 Hz **14703/0310**



PROVEN ACCURACY

SMD 6 and SDM 1 are compact, highly precise photometers for measuring sperm concentration. Cleaning is simple, maintenance is minimal.

Photometer SDM 6

- Determination of sperm concentration and dose calculation of boar, bull, stallion, ram, and buck semen
- Automatic calculation of extender volume and number of doses
- Display of semen concentration in 10^9 sperm/ml
- Large touch screen, easy handling
- Serial interface for data transfer

Photometer SDM 6

with integrated printer for printout of ejaculate production data	12300/0006
without printer	12300/0008

Accessories

Control cuvette set, 4 pieces	12300/0010
Paper for printer	12300/0311
Macro cuvette, 4 ml, 100/box	12301/0003
NaCl solution, 0.9 %, 1 l	12301/4667
Dispenser, 0.5-5 ml for NaCl solution	12428/1815
Bottle for dispenser, 500 ml	12428/1905
Adjustable single channel pipette, yellow, autoclavable, 10-100 μ l	12425/4810
Pipette tip, 10-100 μ l, yellow, 1000/bag	12425/9409

Photometer SDM 1

- Raw semen samples can be used without dilution
- Semen concentration is displayed in million sperm/ml
- Electrical connection: with included mains adapter 100-240 V or batteries

Photometer SDM 1, calibrated for porcine semen [1]	12300/0100
--	------------

Accessories

Micro cuvette for SDM 1, 100/box [2]	12300/1111
Multispecies software for reprogramming to other species	12300/0130



4 SEMEN DILUTION



Electronic precision scale up to 6 kg

For the determination of the ejaculate volume or for weighing out extender.

- Weighing range: 6000 g
- Resolution: 1 g
- Weighing pan: 150 x 170 mm

Electronic precision scale up to 6 kg

14273/0440



Electronic precision scale up to 2 kg

For accurate weighing of antibiotics or extender powder.

- Weighing range: 2000 g
- Resolution: 0.1 g
- Weighing pan: 130 x 130 mm

Electronic precision scale up to 2 kg

14295/0444



SmartDispenser 2.0

Product features

- Combination of pump, balance, and control unit with touch screen
- Constant feedback between pump and control unit guarantees a measuring precision of ± 2 g
- Can be combined with a heated extender tank and lab management software
- Very modest space requirements
- Splash reduction for less spillage of semen during dilution
- Included pulsation damper ensures a smooth fluid flow

The SmartDispenser packages include a stand, tubing/sinker, control unit, scale, pump, and pulsation damper.

SmartDispenser 2.0

XL, pump: up to 13 l/min, scale: up to 24 kg with a resolution of ± 2 g [1]

13200/0501

L, pump: up to 5 l/min, scale up to 24 kg with a resolution of ± 2 g [2]

13200/0502

Accessories

Semen mixing cylinder

3.5 l 13203/0001

5.5 l 13210/0030

Silicone tubing

for SmartDispenser L 13200/0011

for SmartDispenser XL 13200/6010

Sinker, stainless steel

for SmartDispenser L 5013200/0012

for SmartDispenser XL 5013200/6011

SECURE AND PRECISE DILUTION

The intelligent combination of devices guarantees dosage accuracy of extender and an efficient workflow in the semen laboratory.



Semen dilution



more information

Androstar® Premium

Premium extender for boar semen long term preservation.

- Ideal extender for extra protection under difficult transport and temperature conditions or for challenging boar lines
- External influences on the sensitive sperm cells are effectively buffered over a wide temperature range of **+5°C to +25°C** (storage at 5°C allows to control resistant bacterial contamination)
- Provides greater latitude in acceptable semen temperature fluctuations and processing schemes
- Available with organic bactericidal supplement (OBS) providing effective control of bacterial contamination with reduced or even without antibiotics in the extender

Androstar® Premium	
1 liter	13533/1001
5 liters	13533/1005
10 liters	13533/1010
100 liters	13533/1100

Novistar®

Essential extender for boar semen long term preservation.

- Ideal extender for extended storage and transport times
- Designed to perform in a temperature range of **+15°C to +20°C**
- Novel, equilibrated structure maintains the fertilizing capacity of sperm from day one at a superior level compared to traditional extenders

Novistar®	
1 liter	13539/0001
5 liters	13539/0005
10 liters	13539/0010
100 liters	13539/0100

Androstar® Plus

Plus extender for boar semen long term preservation.

- Ideal extender for long term preservation under suboptimal transport and storage conditions
- Androstar Plus extends the temperature limit tolerated by the sperm cells to the range of **+10°C to +25°C**
- Maintains a high level of semen quality by protecting the sperm function and reducing chilling-induced changes in sperm reactivity
- Compensates effectively for various stress factors

Androstar® Plus	
1 liter	13531/1001
5 liters	13531/1005
10 liters	13531/1010
100 liters	13531/1100

SUPERIOR PROTECTION

Cell Shield Protection (CSP) is a proprietary additive in Minitube's high performance extenders Androstar® Plus and Androstar® Premium. It provides unparalleled protection for sperm exposed to a variety of ambient conditions, from day 1 on.

Minitube long term extenders contain a highly efficient pH buffer system, a powerful combination of antioxidants and well-proven membrane stabilizers.



long term premium



long term plus



long term essential

M III®

Balanced extender for boar semen medium term preservation.

A potential buffer system provides a stable pH value during the entire storage period. Antioxidants reduce the ageing process and neutralize the metabolites of the sperm cells. This allows for an optimized sperm cell protection and fertility potential.

M III®	
1 liter	13515/0001
5 liters	13515/0005
10 liters	13515/0010
83 liters	13515/0083



medium term

BTS

State-of-the-art extender for boar semen short term preservation.

The classic formula improved by Minitube provides a balanced medium applicable under all practical conditions.

BTS	
1 liter	13525/0001
5 liters	13525/0005
10 liters	13525/0010
20 liters	13525/1020
100 liters	13525/1100



short term

+ Why choose Minitube extenders

Minitube extenders are made in Germany in our GMP certified production plant. The extenders convince through performance and reliability – batch after batch. The user-friendly packaging and excellent solubility make them an easy and safe choice for every lab.



Minitube extenders are available with a variety of antibiotics, tested for sperm friendliness and efficiency. Thus, compatibility with sperm viability is guaranteed, as well as the efficient control of a large spectrum of bacteria, especially those normally found at boar studs.

Extenders without antibiotics and separately compounded antibiotics are available alternatively:

Eurococktail , contains Streptomycin, Penicillin, Lincomycin and Spectinomycin	
for 5 l extender	13540/5000
for 50 l extender	13540/5050
Gentamicin sulphate	
12.5 g for 50 l extender	13540/3050
25 g for 100 l extender	13540/3100

Only recommended for temporary and accompanying measure to control resistant bacteria:

Antibiotic supplement, for 100 l extender	13540/4000
---	------------



more information

Heated extender vat, 100/200 l

Product features

- Double wall and double bottom with heating system
- Temperature control unit HT 50 with freely adjustable temperature up to +55°C
- All stainless steel, easy to disinfect
- Electrical connection: 230 V (115 V also available)

Your benefits

- + Selected extender temperature is reliably maintained during the whole production day
- + Disposable round bottom plastic bags provide optimal hygiene standard

	100 liters	200 liters
Heated extender vat	13201/0100	13201/0200
Heated extender vat with stirring drive	13201/0100R	13201/0200R
with scale, on wheels	13201/0102R	13201/0202R
with scale, on wheels, UV lamp, heated lid	13201/0104R	13201/0220R
Round bottom plastic bag	13201/4115	13201/4116
Retrofit kit: heated lid and UV lamp	13201/0400	13201/0420



Heated extender vat, 20 l

- Temperature control unit HT 50 with freely adjustable temperature up to +55°C
- Two openings in the lid allow the connection to an automatic pump, or to the SmartDispenser
- All stainless steel, easy to disinfect

Heated extender vat, 20 l [1]	
230 V	13201/0020
115 V	13201/0021
UV lamp for 20 l extender vat [2]	13201/0025
Round bottom plastic bag for 20 l vat	13201/4112



GO FOR HYGIENE

The heated lid with UV lamp (available as an accessory for all vats) is designed to sterilize the empty or water-filled vat before adding the extender, ensuring the highest level of hygiene.

Laboratory heating plate

- For keeping raw ejaculates warm until analysis is completed
- Preset temperature: 37°C
- Integrated control unit, external power supply
- Heated area: 470 x 260 mm
- Suitable for 115 V und 230 V
- Power consumption: 70 W

Laboratory heating plate [1] 12055/0010

Support for US Bag® [2] 11124/1000



Water bath

For keeping semen and extender warm in dry environment. The water bath is covered by the inserts, which protect the ejaculates against spray water.

- Inner dimensions of each of 6 cylinders ø 140 x 296 mm, volume 4.1 l
- Immersion thermostat with circulation pump
- LED temperature display, heating capacity 2 kW
- Operating temperature +20°C to +38°C (for sterilization short-term operation at up to +100°C possible)

Water bath, stainless steel

230 V/50 Hz 14079/0060

115 V/60 Hz 14079/0061



Infrared thermometer

For temperature measurement without contact. With laser for marking the measuring point.

- Measurement range: -50 to +200°C / +200 to +800°C
- Display in °C or °F selectable
- With case and battery

Infrared thermometer 15120/7000



UV water disinfection unit

For disinfection of water which has been purified e.g., through ion exchange cartridge. Significant improvement of water hygiene, easy and cost-efficient prevention of water contamination.

- With control function for UV lamp lifetime
- 1/2" connection
- Stainless steel
- Capacity: up to 400 l/h
- 110-240 V/50-60 Hz

UV water disinfection unit **14010/3000**

Assembly kit for UV water disinfection unit **14010/3002**



Water purification system

Product features

- Latest technology, based on reverse osmosis
- Indication of the purified water quality in conductivity and % deionization
- Sterile filter for tank ventilation
- Connection: 230 V/50 Hz, 115 V/60 Hz, 100V/50 Hz or 100 V/60 Hz

+ Your benefits

- + High level of purity of the treated water
- + High security due to automatic sanitization, quality tests and warnings
- + Requires low maintenance

Millipore water treatment plant with tank

production capacity approx. 24 l/h, 200 l tank **14040/0024**

production capacity approx. 8 l/h, 100 l tank **14040/0008**



Conductivity meter with calibration kit

Pure water tester with automatic temperature compensation. Used to control quality of purified water.

- Pocket size
- Range: 0.1 to 99.9 μ S
- Resolution: 0.1 μ S
- Measurement precision: \pm 2%
- Battery operated

Conductivity meter **14027/2223**



Monodistiller

- Stainless steel
- Separate cooling and feed water supply with magnetic valve
- Connection: 220 V/3 ph or 400 V/3 ph + 0

Monodistiller	
capacity: 8 l/h, reservoir 16 l, cooling water consumption: approx. 72 l/h, input: 6000 W	14054/2008
capacity: 12 l/h, reservoir 24 l, cooling water consumption: approx. 198 l/h, input: 9000 W	14054/2012



Bidistiller

- Stainless steel
- Cooling water consumption: approx. 198 l/h
- Connection: 220 V/3 ph or 400 V/3 ph + 0

Bidistiller, capacity: 8 l/h, input: 11500 W	14052/2108
--	------------



Semen dyes

Semen dye	20 ml	100 ml
red	13900/0200	13900/0720
blue	13900/0300	13900/0730
green	13900/0500	13900/0750
yellow	13900/0600	13900/0760



Refractometer

Test for correct extender powder/water ratio in prepared boar semen extender. Prevents frequent mistakes in extender preparation.

Refractometer	24400/0160
---------------	------------



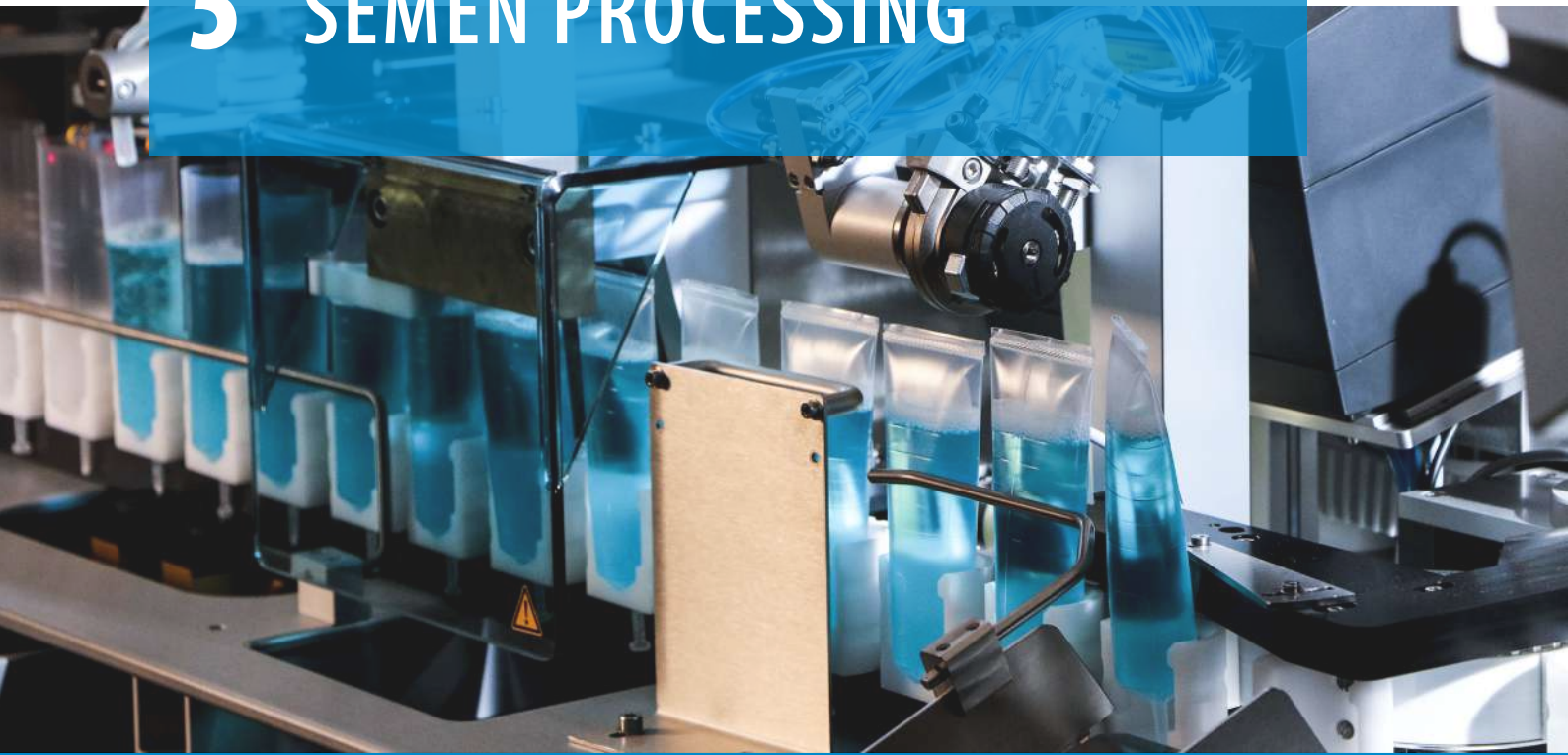
EasyCult

Culture medium for bacterial analysis. Includes two different culture media for the analysis of aerobic and anaerobic bacteria. For the hygiene control in the semen laboratory.

EasyCult, 20/box	26000/0010
Mini incubator for EasyCult	
230 V/50 Hz	14125/0010
110 V/50 Hz	14125/0011



5 SEMEN PROCESSING



■ Minitube boar semen tubes and bags

A semen container must guarantee non-toxicity in terms of sperm tolerance and semen fertility. **Minitube QuickTip® semen tubes** and **QuickTip® semen bags** meet this essential requirement through compliance with numerous regulations, a rigorous quality control and not least, design.

As a specialized and **ISO 9001:2015 certified producer** of semen tubes and bags, Minitube follows a **strict quality control program** which consists of a three-level concept for the quality assurance and testing of raw materials and finished products that are in contact with semen.



(+ Your benefits

- + Every batch undergoes the Sperm Safe program
- + Materials are exclusively sourced from certified German suppliers and comply with FDA and EU directives
- + All raw component batches undergo sperm toxicity tests prior to release for production
- + Production process guarantees full traceability
- + Made by Minitube in Minitube premises, production certified according to ISO 9001:2015 and regularly audited by external entities
- + Compatible with all common tube/bag filling and sealing machines
- + Suitable for all catheters and insemination techniques
- + Proven QuickTip® system guarantees an easy and fast application for the AI technician
- + Available in various sizes, formats, and colors

THE PERFECT CHOICE

QuickTip® semen tubes and bags are designed for user convenience and sperm friendliness. They are 100% sperm safe.



more
information

QuickTip® semen tube

QuickTip Flexitube®, very soft wall

QuickTip® Superflexitube, extra soft wall

	PCAI Flexitube® 60 ml	PCAI Flexitube® 60 ml, flexible nozzle	Flexitube® 95 ml	Flexitube® 95 ml, flexible nozzle	Superflexitube 95 ml
transparent	13451/03501	13454/03601	13452/01961	13453/07961	13452/07961
red	13451/1350	13454/13601	13452/11961	13453/17961	13452/17961
yellow	13451/2350	13454/23601	13452/21961	13453/27961	13452/27961
green	13451/3350	13454/33601	13452/31961	13453/37961	13452/37961
blue	13451/4350	13454/43601	13452/41961	13453/47961	13452/47961
orange	13451/5350	13454/53601	13452/51961	13453/57961	13452/57961
Tube clamp , to seal e.g., tubes of test samples			13452/0005		



QuickTip® semen bag (NT)

QuickTip® semen bag, narrow type (NT)

volume up to 60 ml, 1000/roll [1]	13460/0060
volume up to 90 ml, 1000/roll [2]	13460/0090
volume up to 60 ml, 750/roll [1]	13460/0260
volume up to 90 ml, 750/roll [2]	13460/0290
volume up to 90 ml, with tear-off perforation, 750/roll	13460/0190



QuickTip® semen bag (WT)

QuickTip® semen bag, wide type (WT)

volume up to 60 ml, 1000/roll [3]	13460/1060
volume up to 90 ml, 1000/roll [4]	13460/1090
volume up to 90 ml, with tear-off perforation, 750/roll	13460/1190



QT-Packer

Product features

- Small footprint of only 1.2 m x 0.6 m or 1 m x 0.9 m, weight approx. 67.5 kg
- Modular design, components can be installed at flexible distances
- High speed of 1500 bags per hour under production conditions in twin filling mode; >1800 bags per hour in continuous operation
- Excellent filling accuracy of ± 1 ml
- Fully electric design; no need for compressor or pressured air (silent operation)
- Fills 90 ml and 60 ml QuickTip® NT bags for traditional AI and PCAI; no mechanical machine adjustment when switching between bag sizes
- Choice of twin or single filling mode; >1000 bags per hour in continuous operation of single filling mode

QT-Packer, 230 V (115 V on request)

13215/0000

Your benefits

- + Wide range of label designs, including barcode, QR-, PDF417- and DataMatrix code and company logos
- + Fully automatic data transfer from and to laboratory software in real time (Prism10 and IDEE)
- + Guaranteed long-term support by experienced team of service technicians

Accessories

Kit of 2 dispensing tubes, with needle and sinker

13215/0160

Cutting knife

13215/0175

Filling needle

13215/0165

Bag ejection slide, stainless steel

13215/0180

Label for QuickTip® semen bags, 2000/roll

13210/4964



more
information

Automatic packaging machines for boar semen in tubes

Producing more than 120 million tubes per year worldwide, Minitube machines prove their worth every day as reliable and efficient cornerstones for the AI industry.

+ Your benefits

- + The automation of semen production saves labor time and increases product quality
- + Interfaces to Prism10 or other computer programs make the production data available in real time to sales and administration
- + Machine control via industrial PC with touch screen, easy menu navigation
- + Sealing of the tubes with ultrasound (HyPacker, MiniBSP, SPS-11)
- + Automatic labeling, also possible with barcodes and company logo via thermo-transfer or thermo-direct printer
- + Our service team provides full service via hotline, by remote access or on the spot



	HyPacker [1]	MiniBSP [2]	SPS-11 [3]	TwinPacker 2.0 [4]
Maximum capacity*	1800 tubes/hour	950 tubes/hour	900 tubes/hour	650 tubes/hour
Tube magazine capacity	2100	210	160-210	42 (2 stacks of 21 tubes each)
Required space	200 x 110 cm	180 x 65 cm (table)	142 x 70 cm (table)	140 x 65 cm (table)
Data connection to lab management software	Yes	Yes	Yes	Yes
Operating pressure	6 bar (5-10)	6 bar (5-10)	6 bar	not needed; fully electric
Compressor capacity	> 440 l/min	> 350 l/min	550 l/min	-
Pressure tank	200 l	100 l	300 l	-
Electrical connection	230/115 V, 50/60 Hz	230/110 V, 50/60 Hz	230/110 V, 50/60 Hz	230/115 V, 50/60 Hz

* Performance data may vary depending on production conditions.



HyPacker

The HyPacker offers the **highest capacity** among the Minitube filling machines and is the ideal solution, when large quantities of tubes need to be filled, sealed, and labeled in a short time.

HyPacker, 230 V (115 V on request)

13208/4000

Accessories

Dispensing tubing for HyPacker, sterilizable

13208/4160

Ejaculate container, 5.4 l

13208/4030

Pool container, 15 l

13208/4015

Label, blank, 2500/roll

13210/4831

Bag for ejaculate container, 5.5 l

13203/4010

Bag for pool container, 15 l

13203/4100

Product features

- Speed of up to 1800 tubes per hour under production conditions due to double filling station for automated ejaculate exchange
- Third tube filling station with integrated pump for optional extender addition
- Processing of single ejaculates or pools and of different tube lengths
- Electronic weighing cells enable adjustment of the filling level in every tube via software and ensure a very exact filling volume (± 1 ml)
- Ultrasound sealing unit, welding gap easy to adjust
- Hygienic design and easy cleaning: closed surfaces, all elements in protective casings, easy removal of single parts
- Integrated lot sorting of produced tubes in boxes or bags
- High speed thermal transfer printer (printer configuration via Ethernet)
- Fully automatic data transfer from and to laboratory software in real time (Prism10 and IDEE)
- Integrated barcode scanner and touch screen for high user-friendliness
- Detachable modular tube magazine (2100 tubes) for filling outside the lab area
- Dimension: 1100 x 2000 x 2200 mm (W x D x H)
- Weight: approx. 414 kg



more
information

MiniBSP

This fully automatic packaging machine for boar semen is a **space saving table model** for the processing of **up to 950 tubes per hour**.

MiniBSP, 230 V (110 V on request)

13210/0005

Accessories

Third tube filling station with extender dispenser*

13210/0045

Mobile MiniBSP table, with conveyor belt for automatic separation of ejaculates into storage boxes, including 3 storage boxes

13210/0091

Thermo-transfer printer**
(instead of standard thermo-direct printer)

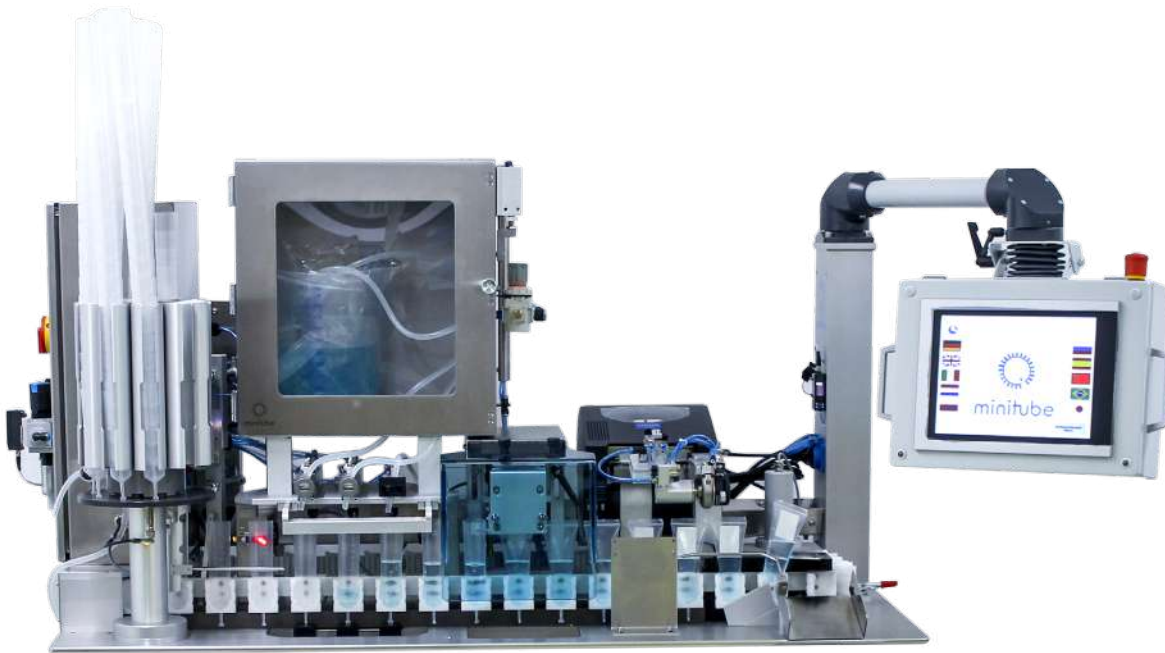
5013210/0320

* After adding pre-extended ejaculate, this station fills each tube with the remaining volume of extender.

** Thermo-transfer labels are more robust, especially against humid environments.

Product features

- Integrated tube magazine for 210 tubes
- Filling accuracy of ± 1 ml
- Adjustable ultrasonic sealing station for different tube sizes (30 ml to 90 ml)
- Labelling with barcodes, 2D-codes, PDF 417-codes and company logo
- Second filling station for tubes with automatic ejaculate change: while the machine is processing the ejaculate, the second one can be prepared, and the machine automatically switches to the second filling station (machine can be used without interruption)
- Fully automatic data transfer from and to laboratory software in real time (Prism10, Prism 3.9 and IDEE)
- Internet capabilities for remote service access
- Dimensions: 1560 x 640 x 810 mm (W x D x H)
- Weight: approx. 160 kg



HIGH QUALITY TECHNOLOGY

Elaborate construction details guarantee best observation ability, optimal machine operation and minimum maintenance.



more
information

SPS-11

Designed, engineered, and built for efficiency, dependability and performance. The SPS-11 automatically fills tubes with the selected semen volumes, provides an ultrasound seal and labels each tube - **ideal for processing semen pools**.

SPS-11	
110 V	13220/1100
230 V	13220/1112

Accessories

Single use dispense tubing, 25/bag, 300/box	13210/0172
Label, blank, 2500/roll	13210/4831
SPS-11 spare parts kit	13220/1105
SPS-11 rubber seal with V-slot cut, reusable	13220/1170
Plastic pitcher with lid for SPS-11, diameter 23.5 cm, holds approx. 200 doses, 16 l	13220/2103

Product features

- Processing capacity: approx. 900 tubes/hour
- Dose volume 45–85 ml; with low dose option 35 ml
- Available for filling 90 ml tubes with and without flexible nozzle
- Filling accuracy ± 1.5 ml
- Includes two dispensing pitchers (1–60 dose per 5 l capacity and 1–200 dose per 16 l capacity pitcher)
- Very robust tube sealing
- Customizable labels including barcodes (Code 39)
- Communicates directly with lab software Prism10 and Prism 3.9
- Highest reliability for production
- Quick and easy disassembly without tools for daily cleaning and routine maintenance



more
information

EFFICIENT, COST-EFFECTIVE, RELIABLE

Automatic packaging and labeling machine with a processing speed of up to 650 tubes per hour - ideal solution for small and medium sized boar studs.

TwinPacker 2.0

The TwinPacker 2.0 is a compact and robust tabletop machine featuring a dual working cycle that processes **two semen tubes at a time**.

TwinPacker 2.0, 230/115 V, 50/60 Hz 13213/0000

⚙️ Accessories and spare parts

Dispensing tube complete, with stainless steel sinker and filling nozzle 13213/0010

Label roll, white, 2500 labels (30 x 50 mm) 13214/3049

Beaker, 5 l 13210/0101

Beaker, 10 l 13210/0102

Pooling bag for 5 l beaker, 100/package 13203/4050

Pooling bag for 10 l beaker, 100/package 13203/4100

Silicon tape, clear, for TwinPacker sealing unit 13214/0050

Heating wire, for TwinPacker sealing unit, 1 pair 13214/0100

Anti-adhesive tape, for TwinPacker sealing unit 13214/0200

Silicon fiber tissue, for TwinPacker sealing unit 13214/0300

⚙️ Product features

- Automatic tube feeding and transport, no magazines needed (tube holder is loaded with two stacks of 21 tubes - when the stacks are down to few tubes, new stacks are added to the holder)
- Peristaltic pumps produce a precise filling volume from the first tube on (± 1 ml)
- Tube sealing station uses robust heat impulse sealing technology
- Printing station provides state-of-the-art labels with logos and barcodes for automatic identification of the semen batch
- Processing of 60 ml and 90 ml boar semen tubes; change of tube type takes about 20 seconds
- Fully electric; no pressured air needed
- Fully automatic data transfer from and to laboratory software Prism10 and IDEE
- Hygienic design and easy cleaning
- Dimensions: 140 x 65 x 55 cm (W x D x H), space saving, can be set up on standard lab table
- Weight: approx. 85 kg



more
information

Manual boar semen dispenser

Product features semen dispensing unit

- Rugged, solid frame
- With track for tube magazine or bottle magazine
- For mixing cylinders with disposable plastic bags in 2 sizes: 3.5 und 5.5 l

Semen dispensing unit

13203/0000

Product features sealing unit

- Simultaneous sealing of 6 tubes (output: approx. 600 tubes/hour)
- With magazine track and pedal switch
- Both jaws with 4 mm heating wires
- Individual adjustment of heating and cooling cycles

Sealing unit HPL 450

230 V

13225/0000

115 V

13225/0006



Accessories

Semen mixing cylinder 5.5 l [1] 13210/0030

Semen mixing cylinder 3.5 l [2] 13203/0001

Flow through cylinder [3] 13203/0006

Insert ring

for semen mixing cylinder 3.5 l 13203/0005

for semen mixing cylinder 5.5 l 13210/0035

Dispensing nozzle* 13203/0012

Magazine

for 6 tubes 13204/9006

for 24 bottles 13204/0024

Adapter rack, for filling of 60 ml tubes (2 needed for semi-automatic packaging system) [4] 13225/0060

Semen dispensing bag, disposable, non-toxic material

3.5 l, 100/bag 13203/4001

5.5 l, 100/bag 13203/4010

Anti-adhesive tape for sealing jaw 13225/0201

Heating wire, width 4 mm, length 620 mm, pair 13225/0100



* Made of sperm-friendly plastic material, to be sterilized in hot water or vapor.

6-tube manual sealer

- Simultaneous sealing of 6 boar semen tubes
- Manual closing of sealing jaws with lever and 4 mm heating wires
- Individual adjustment of heating and cooling cycles
- Output: 400 tubes/hour approx.

6-tube manual sealer

230 V	13225/6000
115 V	13225/6001

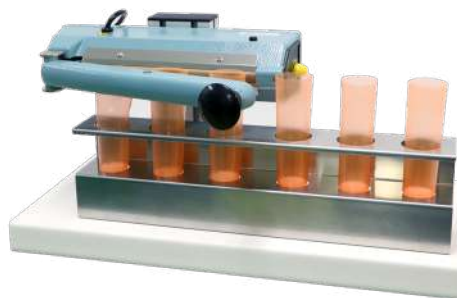


3-tube manual sealer

- Simultaneous sealing of 3 boar semen tubes
- Sealing clamp with 2 mm heating wire
- Individual adjustment of heating time
- Output: 200 tubes/hour approx.

3-tube manual sealer

230 V	13225/0003
115 V	13225/0013



Label printer

- Label printer with software for label creation and label dispenser
- Max. label size: 104 mm x 279 mm (B x L)
- Interface RS 232, USB and parallel, can be connected with lab software

Label printer

18800/0002

Adhesive label 30 x 50 mm, 1000/roll

13210/4829



Boar semen bottles

Boar semen bottle, 100 ml, 500/box 13450/0100

Cap for semen bottle, 250/bag, 5000/box

blue	13450/10001
green	13450/20001
red	13450/30001
yellow	13450/40001
orange	13450/45001
black	13450/50001
violet	13450/60001
white	13450/70001
pink	13450/80001



6 SEMEN STORAGE AND TRANSPORT



Air conditioned boxes

Product features

- Thermoelectric Peltier element technique provides heating and cooling to maintain the desired temperature in the box
- Automatic switchover between heating and cooling depending on outside temperature
- Precise, electronic temperature control
- Polyurethane-full-foam insulation
- 12 V DC connection for mobile use
- Portable

Air conditioned boxes 8 l, capacity 24 tubes or bottles [1]

preset temperature (+17°C) [17161/0008](#)

variable temperature setting [17161/0009](#)

Air conditioned boxes 30 l, capacity 85 tubes or bottles [2]

preset temperature (+17°C) [17161/0030](#)

variable temperature setting [17161/0031](#)

Converter 12 V/AC 100-240 V [17165/1395](#)



Semen storage units

Equipped with both heating and cooling elements, Minitube semen storage units are used to efficiently store semen doses at a constant temperature. Sophisticated technology ensures that the target temperature is kept inside, regardless of whether the room temperature is above or below it. Forced air circulation distributes temperature evenly throughout the unit, even when it is completely full. The aluminum back panel prevents the semen doses from having direct contact with the cooling or heating elements. Condensation is effectively dissipated.

Product features

- Temperature range: +5°C to +40°C
- Accurate within +/- 1°C
- Outer dimensions (H x W x D) approx.:
 - 168 x 75 x 77 cm (544 l) or
 - 85 x 60 x 60 cm (160 l)
- Digital temperature display clearly legible from outside
- TC 200 controller allows variable temperature setting for dual purposes: for semen storage at a selected temperature (e.g. 5°C or 17°C), or for pre-warming the semen collection items to +40°C
- With the programmable HTiP controller, the semen storage units can cool down semen in a defined and gradual way allowing full flexibility for any semen processing scheme down to +5°C
- Sturdy design, robust components

Semen storage unit with adjustable temperature (TC 200)

160 l, capacity: ~300 tubes/bags	14160/0300
544 l, capacity: ~700 tubes/bags	14160/0352

Semen storage unit with programmable cooling curve (HTiP)

160 l, capacity: ~300 tubes/bags [1]	14160/0330
544 l, capacity: ~700 tubes/bags [2]	14160/0340

Alternative cooling option

Klima Kit * [3]

230 V	14160/9001
110 V	14160/9002

* Electronic controller for keeping +17°C in any refrigerator. No installation required. Target value adjustable.



7 INSEMINATION AND DIAGNOSTICS



■ Suzy, porcine AI training model

Suzy is a sow model for training AI technicians in a safe and convenient environment, before they start working with real animals.

The porcine AI training model consists of a plastic body and silicone internals. It provides a most realistic gynecological tract that can be removed to demonstrate anatomy and the AI process as an initial step of the training session.

⚙️ Product features

- Anatomically correct sow model including a complete gynecological tract for traditional and post-cervical insemination
- Passage of inner cannula of PCAI catheter is very natural through noticeable cervix cushions
- Correct introduction of AI catheter and inner cannula is confirmed by oinking sound
- "Real", complete insemination process can be performed
- Compact and light-weight training model for easy transport and cleaning
- Starter-kit includes 100 catheters (Ref. 17106/9176) and two tubes of ReproJelly (Ref. 11907/0100)

Suzy, porcine AI training model

22400/0100



more
information



MOST REALISTIC TRAINING MODEL

Increase the efficiency of your AI training courses and contribute to the enhancement of animal welfare!

ClearGlide®

- Non-absorbent, unique poly gel tip with different hardness zones
- High elasticity of the material: soft tip, compact shaft
- Excellent gliding capacity
- Flexible poly gel tip adjusts perfectly to the cervix, offering superior locking
- Sealing flange reduces semen backflow during insemination
- Recessed shaft avoids injuries

ClearGlide®, with sealing flange [1]

Safelock screw-thread, 25/bag, 500/box	17106/3026
handle with lock, 25/bag, 400/box	17106/4026

ClearGlide®, traditional form, handle with lock, 25/bag, 500/box [2]



Foamtip and SoftGilt

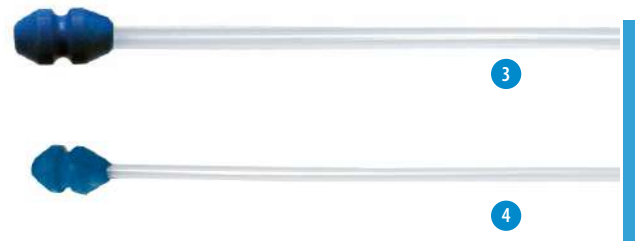
- Tapered foam end for gentle insertion and removal
- Firm foam for better lock, increased stimulation and prevention of semen backflow
- Non-absorbing foam to prevent loss of semen

Foamtip [3]

Safelock screw-thread, 25/bag, 500/box	17106/5077
handle with lock, 25/bag, 500/box	17106/5376

SoftGilt [4]

Safelock screw-thread, 25/bag, 500/box	17109/9000
handle with lock, 25/bag, 300/box	17109/9002



CLEARGLIDE®, FOAMTIP & SOFTGILT

Available in two designs: handle with lock or Safelock screw-thread at the end of the shaft for a firm hold of the tube spout.

Spirette®

- The tip is a true copy of nature
- For perfect sealing and stimulation of the cervix
- Strong lock in the cervix for successful insemination

Spirette®, handle with lock, 5/bag, 600/box [5]



SafeBlue

A clean catheter and a clean insemination process maintain the uterus free from bacterial contamination and thus are of great importance for the insemination success.

The sterilized, hygienically packed catheter, the use of the sheath as protection foil during the passage through the vulva and especially the fact that extra lubricant, which is often a source for bacterial contamination, is no longer needed, make of the SafeBlue a **unique hygiene concept** for the insemination.

Several scientific publications and practice reports emphasize the positive effect of the SafeBlue concept: in field trials 30 to 100 piglets more per 100 inseminated sows could consistently be achieved.

SafeBlue ClearGlide® , traditional form	
Safelock screw-thread, 100/bag, 500/box	17106/3001
handle with lock, 100/bag, 400/box	17106/4001

SafeBlue ClearGlide® , with sealing flange [1]	
Safelock screw-thread, 100/bag, 500/box	17106/3005
handle with lock, 100/bag, 400/box	17106/4005

SafeBlue Spirette® , handle with lock [2]	
100/dispenser box, 400/box	17102/9560
100/bag, 600/box	17102/9561

SafeBlue Foamtip® , Safelock screw-thread [3]	
100/bag, 500/box	17106/9076
100/dispenser box, 400/box	17106/9176

SafeBlue Foamtip® , handle with lock, 100/bag, 500/box [3]	17106/9376
---	------------

SafeBlue SoftGilt , Safelock screw-thread [4]	
100/dispenser box, 400/box	17109/9001
100/bag, 300/box	17109/9003

Extension for insemination catheters

Minitube extensions are suitable for all insemination catheters. They are used for hanging up semen tubes on a wire, providing a hygienic connection between semen dose and catheter. The flexible extensions are applicable for all insemination techniques as the tube/bag can be fixed in almost every position.

Flexible extension , 1/bag [1]	17108/1001
---------------------------------------	------------

SafeBlue Foamtip® , with extension, 100/bag, 500/box [2]	17107/0133
---	------------



more information

+ Your benefits

- + The sterilized catheter remains clean and free of contamination during storage and until insemination
- + Every catheter is sterilized and individually packed in a sanitary sheath; the catheter tip is equipped with a sperm-friendly lubricant
- + Due to the protective sanitary sheath, the catheter remains clean during the insertion in the vulva; only in the clean area the catheter tip is pushed through the sheath
- + No more need for time consuming preparations; dry cleaning of the vulva is sufficient
- + Improved pregnancy rates and litter sizes



PCAI catheter

- Ideal for the post-cervical insemination of sows: all semen cells reach the uterus and can easier be transported into the fallopian tube by uterine contractions
- The Foamtip or ClearGlide® head of the outer catheter is already lubricated; the whole catheter is individually packed in the hygienic SafeBlue sheath
- Inner catheter with very small diameter: nearly no semen remains in the catheter
- SafeBlue concept guarantees high hygiene status

PC Clear, SafeBlue ClearGlide® with PCAI cannula, 17112/3000
individually packed, lubricated, 25/bag [1]

PC Blue, SafeBlue Foamtip® with PCAI cannula [2]
individually packed, lubricated, 25/bag 17112/2000
with stopper, individually packed, lubricated, 25/bag 17112/2002

PC Gilt, SafeBlue SoftGilt with PCAI cannula, 17112/4000
individually packed, lubricated, 25/bag [3]

PC Cannula for post-cervical insemination, 5/bag 17112/1010

DeepBlue catheter

- DeepBlue AI catheter: for deep intrauterine insemination of special semen doses; ideal for very low numbers of sperm, i.e., in frozen-thawed or sexed semen
- DeepBlue ET catheter: for non-surgical transfer of embryos in swine
- Outer catheter SafeBlue: disposable insemination catheter, with lubricant coated catheter head, individually packaged and sterilized
- Patented (University of Murcia, Spain)

DeepBlue AI catheter 17113/0100

DeepBlue ET catheter 19295/0200



more
information



1

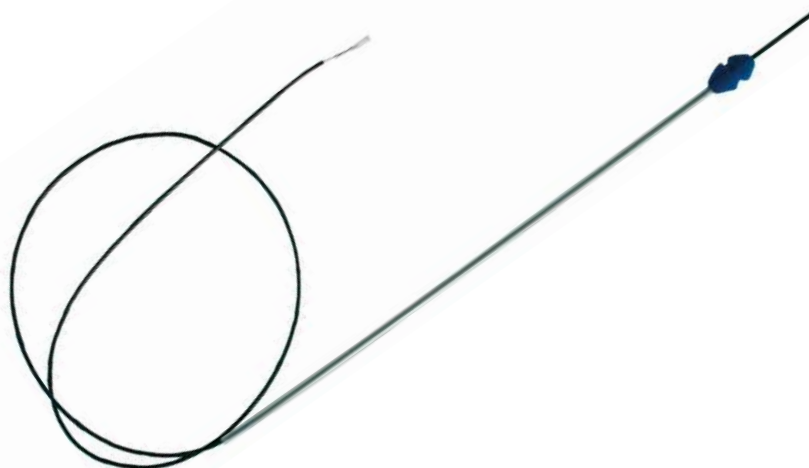


2



3

Insemination and
diagnostics



more
information

Breeding clamp

- Very easy handling: the clamp is just clipped on the back of the sow
- Elastic compressing arms stimulate the flanks of the sow
- Made of stainless steel, easy to clean, rounded edges for maximum safety in the barn
- Effective attachment of any catheter, no need for an elongation tubing between catheter and semen tube
- Flexible rubber holder fits all sows and allows movement during the insemination
- Easily speeds up AI to 30 inseminations per technician per hour



Breeding clamp	
for sows	17114/4000
for gilts	17114/4001

EasyClamp breeding aid

- Lightweight and robust plastic breeding clamp for stimulation of the sow (can easily be put on the flanks with one hand)
- Made of plastic, includes stainless steel rod with hook to hold AI catheter and semen dose
- After inserting the catheter and connecting the tube, it can be fixed by the hook and the sow can finish the insemination by herself
- One AI technician can inseminate 5-8 sows at the same time



EasyClamp	17114/3000
-----------	------------

Breeding belt

Practical with broad ribbon, Velcro fastening, clamp and cord for the attachment of the tube or bottle, individually adjustable to the animal size.



Breeding belt	17114/2100
---------------	------------

BoarScent

BoarScent is a boar pheromone spray and aids in the identification of estrus in sows and gilts. It also helps to stimulate the sow during AI. The spray is applied to the snout.

BoarScent, 35 ml, approx. 88 applications	17115/9051
---	------------



Lubricant RepröJelly

- Non-spermicidal lubricant, water soluble
- Iso-osmotic and sperm-friendly
- Batches are tested for sperm compatibility
- Ideal viscosity to better coat gloves, AI equipment and instruments

Tube with 100 ml, resealable [1]	11907/0100
3 l canister, without dispenser [2]	11907/3000
Dispenser for canister, reusable	11907/3100



Ultrasound scanner

Portable ultrasound scanner for pregnancy detection. Robust, battery operated and easy to clean. Integrated auto-measure function to easily measure back fat thickness.

Comes with 3.5 MHz convex probe (70°; angled forward), contact gel, stable carrying case, carrying strap, two rechargeable batteries, battery charger and USB cable to transmit pictures.

Ultrasound scanner, 5" TFT-Monitor	23500/1000
Spare battery set (2 pcs.)	5023500/1010



Day 22 pregnancy



Day 25 pregnancy



Insemination and diagnostics

Pregnancy tester

For pregnancy detection after 30 days by ultrasonic waves. Operated with rechargeable or normal battery. Very handy, robust and easy to operate. Good freedom of movement due to a probe connected to a spiral cable.

Complete with carry case, test body, wrist band, contact gel bottle and standard battery.

Pregnancy tester	23350/2835
Charger for 100-240 V, with rechargeable battery	23350/2840



8 SEMEN FREEZING



Freezing extenders

The freezing of boar semen is of great importance for the storage of genetic material and its exchange between geographically distanced breeding populations.

However, boar sperm are more sensitive to the processes of freezing than sperm of other species. Minitube provides several extenders, devices and procedures to reduce stress for boar sperm cells during the freezing process and to ensure insemination success with frozen semen.

CryoGuard cooling extender for boar semen (Part A), powder for 100 ml extender [1]

CryoGuard freezing extender for boar semen (Part B), liquid concentrate for 100 ml extender with Equex STM and Glycerol [2]

CryoGuard thawing extender for boar semen, powder for 1 l extender [3]



1



2

3

Semen straws

For over 30 years, Minitube straws have been used for the freezing of biological material. As a worldwide standard for semen freezing, they are perfectly suitable for storage in liquid nitrogen at -196°C . Minitube's quality control process, production techniques and material selection guarantee a reliable product that consistently exceeds industry standards.

Medium Straw*, 0.5 ml, clear, 2500/bag 13408/0010

EcoStraw*, 0.5 ml, clear, 2500/bag 13408/3010

* More colors available.



MPP Uno

Automatic filling and sealing machine for 0.25 and 0.5 ml straws.

- Seals and fills 1 straw per cycle (ideal for handling small volumes)
- Sealing performed by ultrasound
- Conversion between 0.25 ml straws and 0.5 ml straws without exchanging any parts and within only a few minutes
- Vacuum pump and pressure controller integrated into the device
- Ultrasonic generator in an external casing that can be installed at a distance of up to 2.5 m (ON/OFF switch directly on the machine)
- Completely closed filling and sealing area: best hygienic and safety conditions fully guaranteed
- Very compact device which takes up little space
- Capacity: approx. 4000 straws/hour
- Hopper capacity: 2200 straws of 0.25 ml or 1300 straws of 0.5 ml
- Machine dimensions: 460 x 350 x 410 mm (W x H x D) plus ultrasound generator
- Electrical connection: 110 V/60 Hz or 230 V/50 Hz

MPP Uno, complete 13017/0000



more information

Semen freezing

EasyCoder

Clean and odorless printing of straws without ink and solvents.

- Thermal transfer printer with automatic straw supply (output: 3600 straws per hour) for immediate non-abrasive print
- Unparalleled neat and clear printing on 0.5 and 0.25 ml straws; easy and quick conversion between different straw sizes
- Prints up to 3 lines per straw, including barcodes, logos, and specific characters
- Control via PC (not included) by a user-friendly Minitube software
- Easy handling, little maintenance required
- Dimensions (L x W x H): 660 x 370 x 310 mm
- Electrical connection: 110 V/50-60 Hz or 230 V/50-60 Hz

EasyCoder printer 13038/0000

Thermal transfer ribbon, black 13038/0010



more information

MultiCoder

Semi-automatic direct print on lab items (semen straws, goblets, cassettes, culture dishes, marking labels and many more).

- High resolution inkjet printing
- Very versatile: print system can label most kinds of materials such as plastics, glass, or aluminum
- Easily writeable information on the smallest amount of space, including text, barcode, QR-Code and logo
- Manually moveable slide and a unique, easy-to-use carrier system allow for a speedy work process (no tools needed for change of product carriers)
- Automatic creation of content for ready-to-print designs via database
- Upload of MS Excel based data formats possible



more
information

MultiCoder printer

13145/0000

Cooling cabinet

- For working with boar semen during preparation for freezing
- Temperature preset to 5°C
- Dimensions: 150 x 100 x 116 cm (W x D x H)
- Electrical connection: 220 V



Cooling cabinet (on rolls)

14335/3000

Refrigerated centrifuge

- Suitable for 6 x 100 ml glass containers (not included in the delivery)
- Temperature range: -20 °C to +40 °C, allows precooling
- Max. speed: 5.100 min⁻¹
- Max. RCF: 5.525 xg
- Zero-maintenance induction motor
- Memory for 60 programs
- Dimensions: 65 x 68.5 x 40.5 cm (W x L x H)
- Electrical connection: 230 V/50 Hz



Refrigerated centrifuge with swing out rotor

14602/0400

Glass container, 100 ml

14602/0801

Cryogenic containers

Full range of cryogenic containers for storage and transport of frozen semen available. Please contact us for an individual offer!





more information

Automatic freezer IceCube

Computer controlled freezer, with comfortable data input and automatic recording of the freezing curve.

- Temperature range: +40 to -180°C
- Freezing rates: 0.01 to 60°C/min
- Heating rates: 0.01 to 15°C/min
- Temperature measurement via 2 Pt-100 resistance thermometers
- Capacity: max. 1080 x 0.25 ml or 0.5 ml straws per freezing cycle
- Dimensions: 540 x 420 x 520 mm (L x W x H)
- Weight: 29 kg

Software for freeze program and control, unlimited storage of programs and processed files, color graphic display of all temperature curves, wide possibility of parameter settings.



IceCube 14S with connector kit for LN ₂ pressure container	
with 10" tablet [1]	16821/3000
with 12" touch screen monitor to be connected to PC or laptop	16821/2000
without monitor to be connected to PC or laptop	16821/1000

Accessories

Rack for IceCube 14S, for 36 straws [2]	16821/5036
Loading device for straw rack	16821/5037
Handling rack for IceCube 14S [3]	16821/5030
Spacer for IceCube 14S [4]	16821/5018
Liquid nitrogen pressure container, 60 l	16820/1900
Roller base for LN ₂ pressure container	16501/0204
Pliers for racks [5]	16821/5031



Semen freezing

MiniThaw thawing unit

- Variable temperature setting (ambient to +50°C)
- Digital display of current temperature
- Straw lift has three compartments and allows thawing of up to 10 straws at a time (0.5 ml or 0.25 ml)
- Can be used in the car (12 V/24 V) or plugged into the wall socket (110/230 V)
- Robust and easy to handle

MiniThaw	17048/0000
----------	------------





MINITUBE INTERNATIONAL

Servicing reproduction technologies worldwide

Minitube USA

800.646.4882
info@minitube.com

Minitub do Brasil

+55 51 3222 7876
minitub@minitube.com.br

Minitube India

+91 11 4309 0668
info@minitube-india.com

Minitube China

+86 185 1545 5770
info@minitube.cn

Minitub Ibérica

+34 977 845 397
info@minitub-iberica.com

Minitube Australia

+61 3 5342 8688
info@minitube.com.au

Minitube Central Europe

+421 377 877 915
mtce@minitube.sk

Minitube Canada

800.500.7978
info.canada@minitube.com

Mexitube Alemania

+52 442 246 73 46/47
info@mexitube.mx

Minitube Middle East

+971 426 68871
info.middle.east@minitube.com

Minitube Indonesia

+62 21 7591 75-96/94
info@minitube.co.id

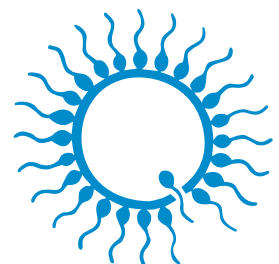
Minitube International AG, Germany

+49 8709 9229 0
minitube@minitube.de

Follow us



www.minitube.com



minitube
our knowledge, your success