

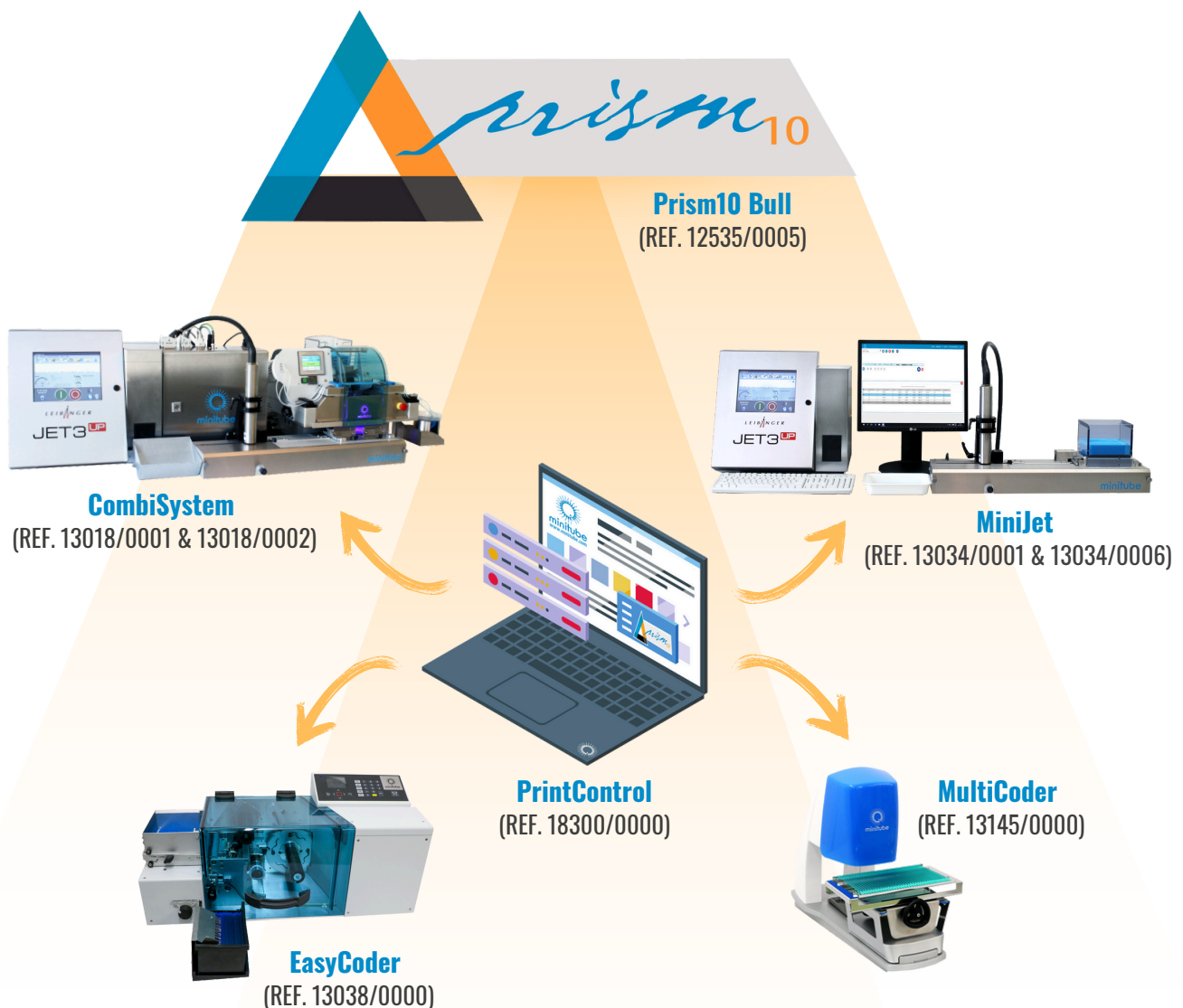


Traceability in AI through machine readable codes

Innovative printing solutions...

By seamlessly integrating laboratory software, printing software, and production machinery, we establish an error-free data flow, enabling comprehensive traceability throughout the entirety of the semen straw production process. Machine readable codes on straws can store a large amount of information in a very compact format, facilitating the transfer of information from the field back to the laboratory.

...for controlling semen production





Minitube's new printing software, **PrintControl**, allows the user to create any number of different layouts. **Free text, database fields, codes, counters** etc. can be defined within these layouts. Once defined, these fields are automatically filled with the information when a data record is selected.

load Print Layout
Mini BC und DM

Editor Settings Load data Processing Monitoring User

Print

you see what you get

	Breed Short Name	Coll No.	Date of Ejac Collection	Days Rest	Donor Name	Donor Number	Extender	Package Name	Production Date	Volume per Dose [ml]	Calculated Doses
<input type="checkbox"/>	FV	1	9/22/23	10	Magnus	252569	Triladyl	MiniP Rot	9/22/23	0.22	709
<input checked="" type="checkbox"/>	FV	1	9/22/23	10	Magnus	252569	Triladyl	MiniP Rot	9/22/23	0.22	709
<input type="checkbox"/>	FV	1	10/6/23	14	Magnus	252569	Triladyl	MiniP Rot	10/6/23	0.22	786
<input type="checkbox"/>	HF	1	10/6/23	11	Hugo	252571	Triladyl	MiniP Rot	10/6/23	0.22	459
<input type="checkbox"/>	FV	1	10/6/23	14	MasterBulle	889966	Triladyl	MiniP Rot	10/6/23	0.22	548

PrintControl
(REF. 18300/0000)



(+ More benefits

- + Browser based and platform independent software
- + One software for all Minitube printers (MiniJet/CombiSystem, EasyCoder, MultiCoder)
- + Seamless data entry and editing via Prism10 Bull or Excel
- + Intuitive user interface and modern design
- + Clear print on straws of all colors and both 0.25 and 0.5 ml straws
- + Serialization with a continuous counter in both text and code
- + Print preview functionality for easy control of print results





1D-Code

(all Minitube printers)



- Barcode (Code 128 B)
- Variable amount of characters (depending on length, independent of height)
- Proven and widely used technology
- Easy to scan with all standard readers and mobile devices
- High resolution and clear print on straws

2D-Code

(MiniJet, CombiSystem)

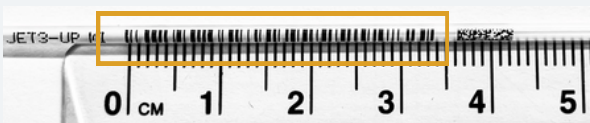


- Datamatrix Code (rectangular or square* type)
- Variable amount of characters (depending on height and length)
- Decoding with special 2D code scanners or mobile devices
- High information density in a small space, multiple codes can be printed on one straw

*Square type not applicable on straw (limited space)

Comparison 1D-Code and 2D-Code

1D, e.g. 13 characters, 34 mm length



2D, e.g. 13 characters, 6 mm length



Possible 2D-Code lengths

	NUMERIC	ALPHANUMERIC	BINARY	EXAMPLE
8 X 18	10	6	3	
8 X 32	20	13	8	
8 X 48	36	25	16	
8 X 64	48	34	22	



Recommended app

Try scanning Datamatrix codes with your smartphone using the Scanbot SDK app! Scan the QR code to download the app from your app store:
<https://scanbot.io/de/products/barcode-software/>



minitube

www.minitube.com



ScanDMC

Smartphone holder that turns a standard smartphone into a reliable, low-cost data matrix code scanner for 0.25 ml or 0.5 ml straws.



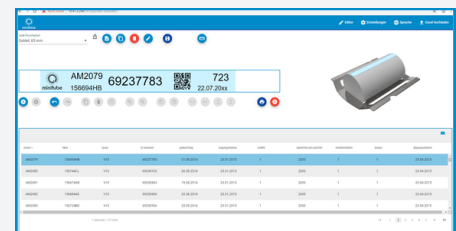
Ref. 13034/0020

(★ Product features

- Holds straws at the ideal scanning distance
- Eliminates reflections to improve accuracy
- Supports all Minitube semen straw colors
- Shields from ambient light and uses LED backlight (6 colors) for optimal illumination
- Includes a short double USB-C cable for power supply
- Compatible with all Android and Apple smartphones with a USB-C port
- Adjustable to fit any phone size and camera position



Data security and traceability during production, storage, and shipping.



Printer options

Versatile printer for lab consumables

The **MultiCoder** prints machine-readable codes on various products, including straw storage systems like goblets, canes, and cassettes. [1]



1 REF. 13145/0000

Advanced software meets advanced equipment

The **JET3UP MI printerhead**, featuring precision inkjet technology, enables complex **Datamatrix codes** to be printed on straws. [2]



2 REF. 13034/0006

PART OF COMBISYSTEM
REF. 13018/0001

Inkless straw printing

The **EasyCoder** is a thermal transfer printer with automatic straw supply for printing bar codes, logos, and special characters. [3]



3 REF. 13038/0000